

## Product datasheet for **TA365575**

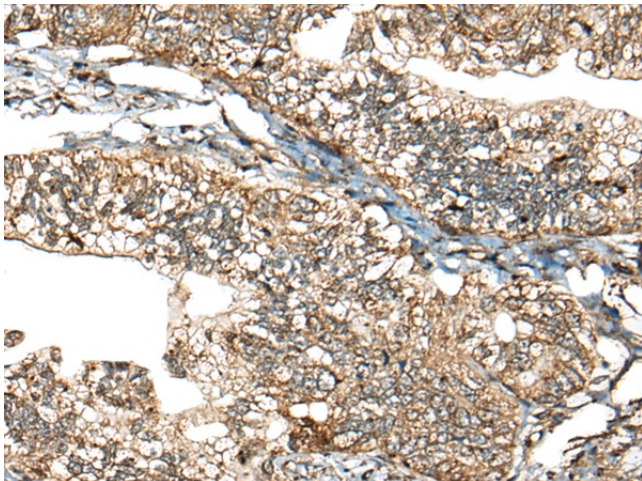
### CALHM1 Rabbit Polyclonal Antibody

#### Product data:

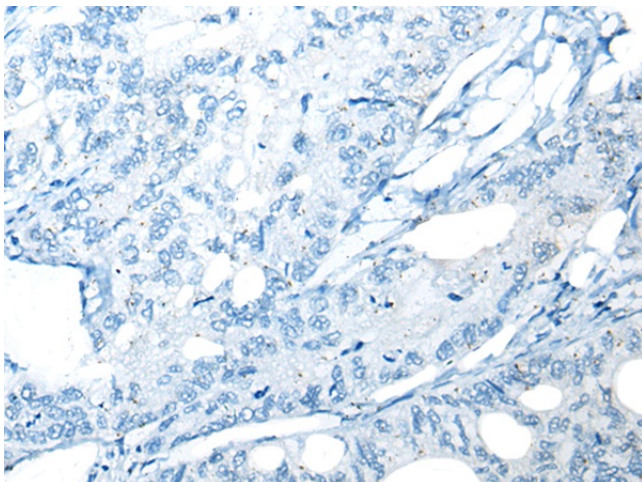
Product Type:	Primary Antibodies
Applications:	IHC
Recommended Dilution:	IHC: 30-150 Positive control: Human gastric cancer Predicted cell location: Cytoplasm and Cell membrane
Reactivity:	Human, Mouse
Host:	Rabbit
Isotype:	IgG
Clonality:	Polyclonal
Immunogen:	Fusion protein of human CALHM1
Formulation:	pH7.4 PBS, 0.05% NaN <sub>3</sub> , 40% Glycerol
Concentration:	lot specific
Purification:	Antigen affinity purification
Conjugation:	Unconjugated
Storage:	Store at -20°C.
Stability:	1 year
Gene Name:	calcium homeostasis modulator 1
Database Link:	<a href="#">Entrez Gene 255022 Human Q8IU99</a>
Background:	This gene encodes a calcium channel that plays a role in processing of amyloid-beta precursor protein. A polymorphism at this locus has been reported to be associated with susceptibility to late-onset Alzheimer's disease in some populations, but the pathogenicity of this polymorphism is unclear.
Synonyms:	FAM26C; MGC39514; MGC39617



[View online »](#)

**Product images:**

Immunohistochemistry of paraffin-embedded Human gastric cancer tissue using TA365575 (CALHM1 Antibody) at dilution 1/40 (Original magnification:  $\times 200$ )



Immunohistochemistry of paraffin-embedded Human gastric cancer tissue using TA365575 (CALHM1 Antibody) at dilution 1/40, treated with fusion protein. (Original magnification:  $\times 200$ )