

## Product datasheet for **TA365570S**

### CAGE1 Rabbit Polyclonal Antibody

#### Product data:

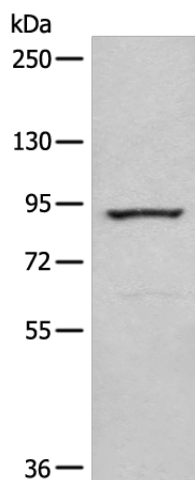
Product Type:	Primary Antibodies
Applications:	IHC, WB
Recommended Dilution:	WB: 200-1000 WB positive control: Jurkat cell lysate IHC: 25-100 Positive control: Human prostate cancer Predicted cell location: Cytoplasm
Reactivity:	Human
Host:	Rabbit
Isotype:	IgG
Clonality:	Polyclonal
Immunogen:	Fusion protein of human CAGE1
Formulation:	pH7.4 PBS, 0.05% NaN <sub>3</sub> , 40% Glycerol
Purification:	Antigen affinity purification
Conjugation:	Unconjugated
Storage:	Store at -20°C.
Stability:	1 year
Predicted Protein Size:	90 kDa
Gene Name:	cancer antigen 1
Database Link:	<a href="#">Entrez Gene 285782 Human Q8TC20</a>

**Background:** Cancer-associated gene 1 protein (CAGE1) is initially identified as a cancer/testis antigen. CAGE1 is mainly a nuclear protein that displays high expression in testis among normal tissues, and wide expression in various cancer tissues and cancer cell lines. CAGE1 may be associated with tumor progression, while the exact function of CAGE-1 is not well understood.

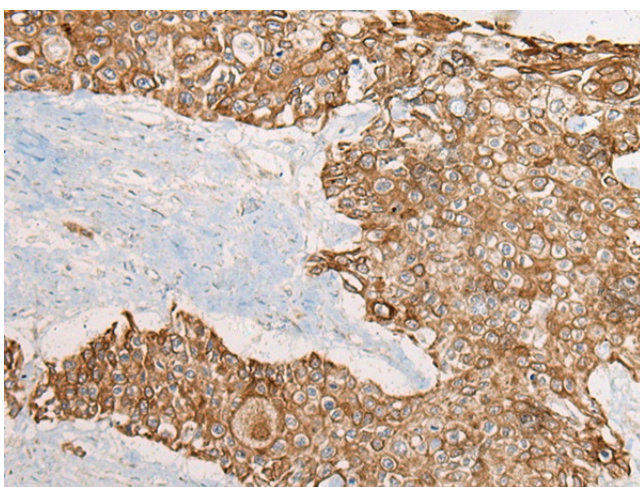
**Synonyms:** bA69L16.7; CAGE-1; CT3; CT95; CTAG3; FLJ40441



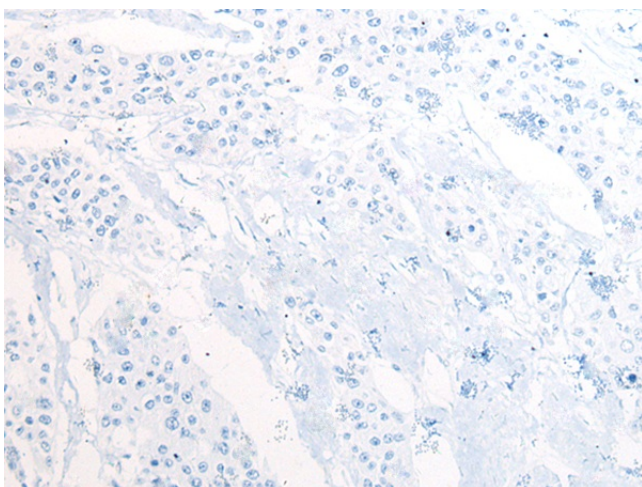
[View online »](#)

**Product images:**


Gel: 6%SDS-PAGE  
 Lysate: 40 µg  
 Lane: Jurkat cell lysate  
 Primary antibody: [TA365570] (CAGE1 Antibody)  
 at dilution 1/250  
 Secondary antibody: Goat anti rabbit IgG at  
 1/8000 dilution  
 Exposure time: 30 seconds



Immunohistochemistry of paraffin-embedded  
 Human prostate cancer tissue using [TA365570]  
 (CAGE1 Antibody) at dilution 1/30 (Original  
 magnification: ×200)



Immunohistochemistry of paraffin-embedded Human prostate cancer tissue using [TA365570] (CAGE1 Antibody) at dilution 1/30, treated with fusion protein. (Original magnification: ×200)