

## Product datasheet for **TA365566**

### Complement C7 (C7) Rabbit Polyclonal Antibody

#### Product data:

Product Type:	Primary Antibodies
Applications:	WB
Recommended Dilution:	WB: 500-2000 WB positive control: HUVEC cell lysate
Reactivity:	Human
Host:	Rabbit
Isotype:	IgG
Clonality:	Polyclonal
Immunogen:	Fusion protein of human C7
Formulation:	pH7.4 PBS, 0.05% NaN <sub>3</sub> , 40% Glycerol
Concentration:	lot specific
Purification:	Antigen affinity purification
Conjugation:	Unconjugated
Storage:	Store at -20°C.
Stability:	1 year
Predicted Protein Size:	94 kDa
Gene Name:	complement component 7
Database Link:	<a href="#">Entrez Gene 730 Human P10643</a>



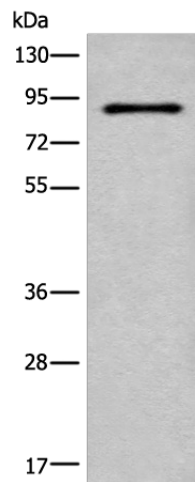
[View online »](#)

**Background:**

The complement cascade is a multi-protein system that functions to clear pathogens from an infected host. Part of the innate (unchanging) immune system, the complement cascade consists of proteins and inactive zymogens that are present in blood and are stimulated by one of several triggers. Once stimulated, the cascade relays amplified responses throughout the body, ultimately activating the cell-killing membrane attack complex which can insert itself into the cell membrane and cause the cell to lyse. C7 (complement component 7) is an 843 amino acid secreted protein that participates in the formation of membrane attack complex (MAC), a complex that forms pores in the plasma membrane of target cells for innate and adaptive immune responses. As a membrane anchor, C7 exists as a monomer or dimer and can form multimeric rosettes with C5 $\beta$ . C7 defects are the cause of component C7 deficiency (C7D), characterized by recurrent bacterial infections caused by *Neisseria meningitidis*.

**Synonyms:**

C7

**Product images:**

Gel: 8%SDS-PAGE  
Lysate: 40  $\mu$ g  
Lane: HUVEC cell lysate  
Primary antibody: TA365566 (C7 Antibody) at dilution 1/800  
Secondary antibody: Goat anti rabbit IgG at 1/8000 dilution  
Exposure time: 60 seconds