

## Product datasheet for **TA365556**

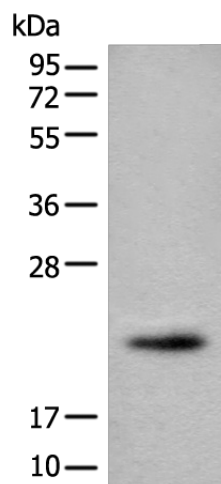
### **C1orf93 (FAM213B) Rabbit Polyclonal Antibody**

#### **Product data:**

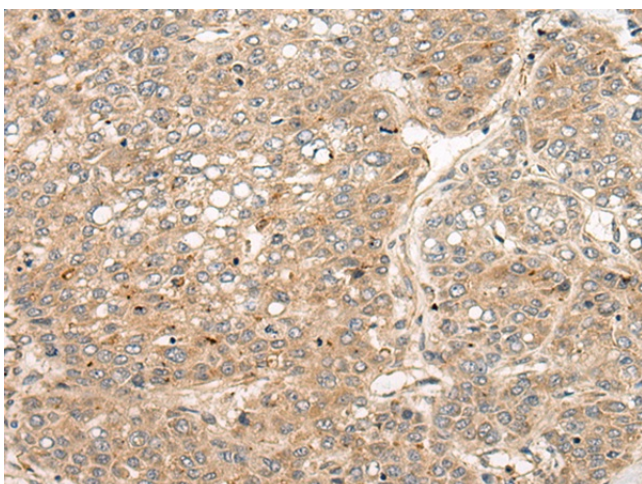
Product Type:	Primary Antibodies
Applications:	IHC, WB
Recommended Dilution:	WB: 200-1000 WB positive control: Human fetal brain tissue lysate IHC: 40-200 Positive control: Human liver cancer Predicted cell location: Cytoplasm
Reactivity:	Human, Mouse, Rat
Host:	Rabbit
Isotype:	IgG
Clonality:	Polyclonal
Immunogen:	Fusion protein of human PRXL2B
Formulation:	pH7.4 PBS, 0.05% NaN <sub>3</sub> , 40% Glycerol
Concentration:	lot specific
Purification:	Antigen affinity purification
Conjugation:	Unconjugated
Storage:	Store at -20°C.
Stability:	1 year
Predicted Protein Size:	21 kDa
Gene Name:	family with sequence similarity 213 member B
Database Link:	<a href="#">Entrez Gene 127281 Human Q8TBF2</a>
Background:	Catalyzes the reduction of prostaglandin-ethanolamide H2 (prostamide H2) to prostamide F(2alpha) with NADPH as proton donor. Also able to reduce prostaglandin H2 to prostaglandin F(2alpha) (By similarity).
Synonyms:	2810405K02Rik; AI836168; PM/PGFS; RGD1308251; RP23-15L19.6



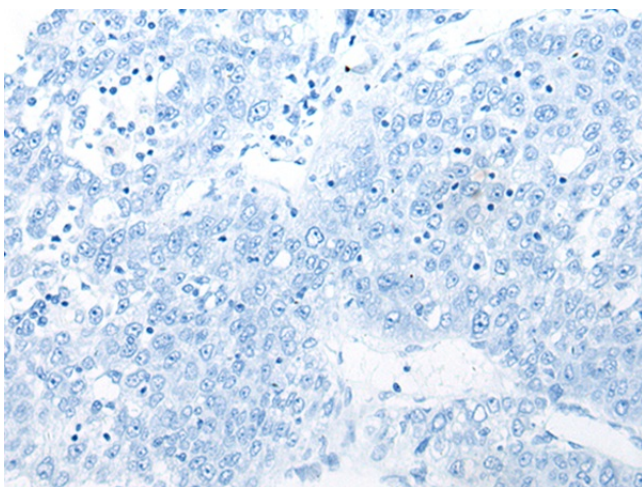
[View online »](#)

**Product images:**

Gel: 12%SDS-PAGE  
Lysate: 40  $\mu$ g  
Lane: Human fetal brain tissue lysate  
Primary antibody: TA365556 (PRXL2B Antibody)  
at dilution 1/550  
Secondary antibody: Goat anti rabbit IgG at  
1/8000 dilution  
Exposure time: 30 seconds



Immunohistochemistry of paraffin-embedded  
Human liver cancer tissue using TA365556  
(PRXL2B Antibody) at dilution 1/55 (Original  
magnification:  $\times$ 200)



Immunohistochemistry of paraffin-embedded Human liver cancer tissue using TA365556 (PRXL2B Antibody) at dilution 1/55, treated with fusion protein. (Original magnification: ×200)