

## Product datasheet for **TA36555S**

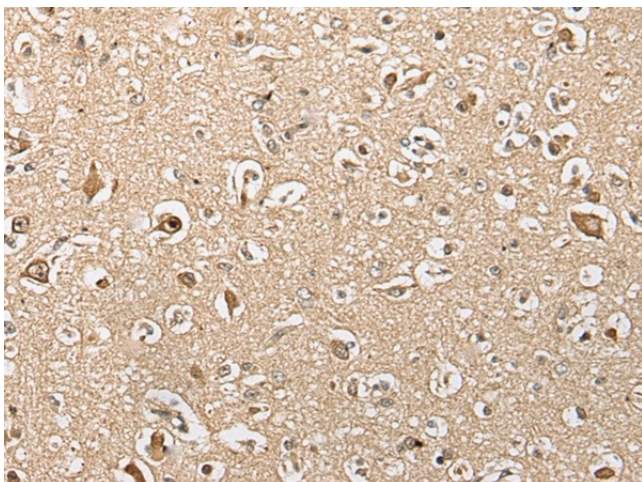
### **C1orf19 (TSEN15) Rabbit Polyclonal Antibody**

#### **Product data:**

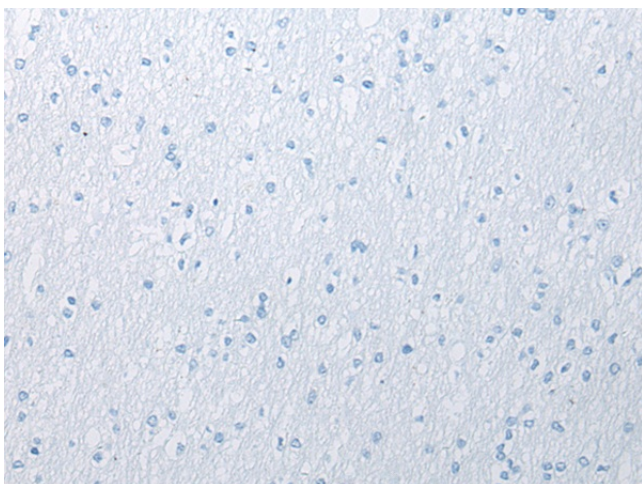
<b>Product Type:</b>	Primary Antibodies
<b>Applications:</b>	IHC
<b>Recommended Dilution:</b>	IHC: 25-100 Positive control: Human brain Predicted cell location: Nucleus and Cytoplasm
<b>Reactivity:</b>	Human, Mouse
<b>Host:</b>	Rabbit
<b>Isotype:</b>	IgG
<b>Clonality:</b>	Polyclonal
<b>Immunogen:</b>	Full length fusion protein
<b>Formulation:</b>	pH7.4 PBS, 0.05% NaN <sub>3</sub> , 40% Glycerol
<b>Purification:</b>	Antigen affinity purification
<b>Conjugation:</b>	Unconjugated
<b>Storage:</b>	Store at -20°C.
<b>Stability:</b>	1 year
<b>Gene Name:</b>	tRNA splicing endonuclease subunit 15
<b>Database Link:</b>	<a href="#">Entrez Gene 116461 Human Q8WW01</a>
<b>Background:</b>	This gene encodes a subunit of the tRNA splicing endonuclease, which catalyzes the removal of introns from tRNA precursors. Alternative splicing results in multiple transcript variants. There is a pseudogene of this gene on chromosome 17.
<b>Synonyms:</b>	C1orf19; HsSen15; sen15



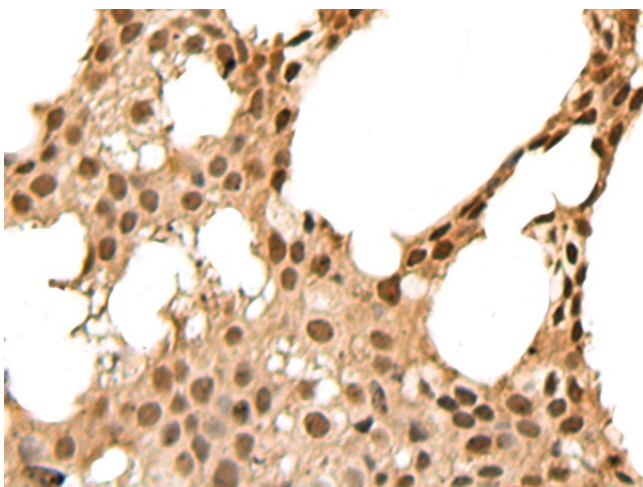
[View online »](#)

**Product images:**

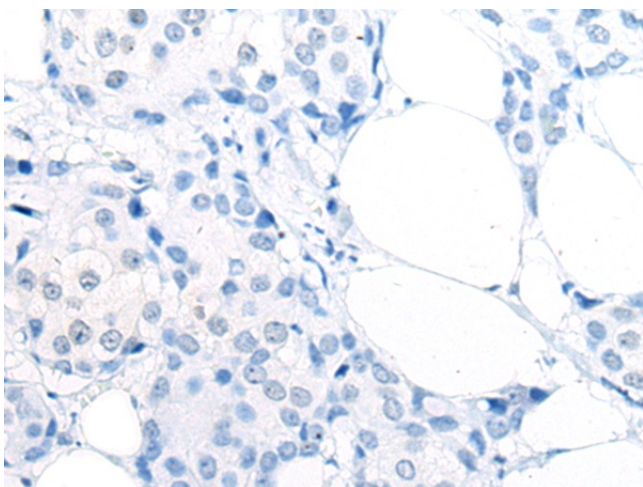
Immunohistochemistry of paraffin-embedded Human brain tissue using [TA365555] (TSEN15 Antibody) at dilution 1/30 (Original magnification: ×200)



Immunohistochemistry of paraffin-embedded Human brain tissue using [TA365555] (TSEN15 Antibody) at dilution 1/30, treated with fusion protein. (Original magnification: ×200)



Immunohistochemistry of paraffin-embedded Human breast cancer tissue using [TA365555] (TSEN15 Antibody) at dilution 1/30 (Original magnification: ×200)



Immunohistochemistry of paraffin-embedded Human breast cancer tissue using [TA365555] (TSEN15 Antibody) at dilution 1/30, treated with fusion protein. (Original magnification: ×200)