

Product datasheet for **TA365552**

C1orf112 Rabbit Polyclonal Antibody

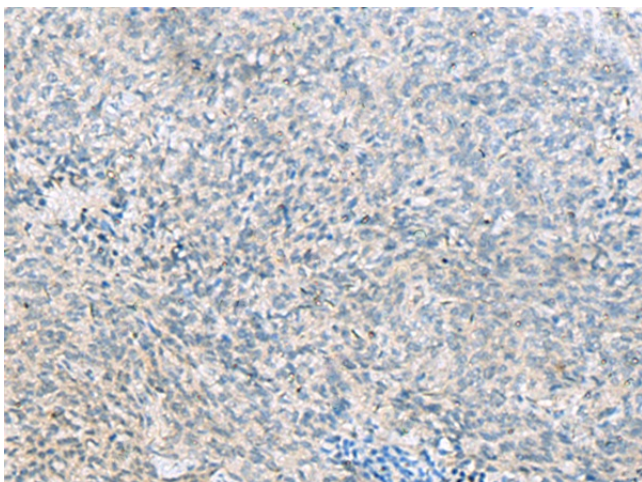
Product data:

Product Type:	Primary Antibodies
Applications:	IHC
Recommended Dilution:	IHC: 50-100 Positive control: Human cervical cancer Predicted cell location: Cytoplasm
Reactivity:	Human
Host:	Rabbit
Isotype:	IgG
Clonality:	Polyclonal
Immunogen:	Fusion protein of human C1orf112
Formulation:	pH7.4 PBS, 0.05% NaN ₃ , 40% Glycerol
Concentration:	lot specific
Purification:	Antigen affinity purification
Conjugation:	Unconjugated
Storage:	Store at -20°C.
Stability:	1 year
Gene Name:	chromosome 1 open reading frame 112
Database Link:	Entrez Gene 55732 Human Q9NSG2
Background:	The function of this protein remains unknown.
Synonyms:	FLJ10706; FLJ13470; MGC130018; MGC130019; RP1-97P20.1

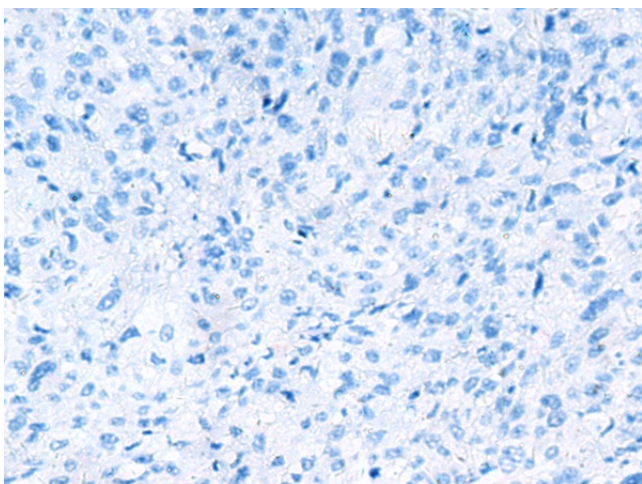


[View online »](#)

Product images:



Immunohistochemistry of paraffin-embedded Human cervical cancer tissue using TA365552 (C1orf112 Antibody) at dilution 1/55 (Original magnification: $\times 200$)



Immunohistochemistry of paraffin-embedded Human cervical cancer tissue using TA365552 (C1orf112 Antibody) at dilution 1/55, treated with fusion protein. (Original magnification: $\times 200$)