

Product datasheet for **TA365549S**

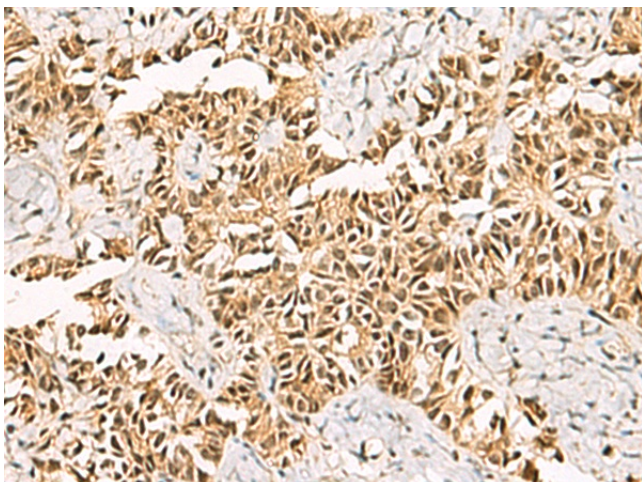
C1orf103 (LRIF1) Rabbit Polyclonal Antibody

Product data:

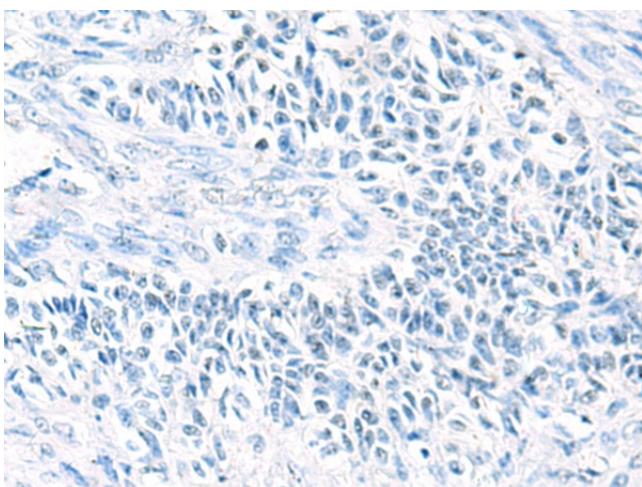
Product Type:	Primary Antibodies
Applications:	IHC
Recommended Dilution:	IHC: 50-200 Positive control: Human ovarian cancer Predicted cell location: Nucleus
Reactivity:	Human
Host:	Rabbit
Isotype:	IgG
Clonality:	Polyclonal
Immunogen:	Fusion protein of human LRIF1
Formulation:	pH7.4 PBS, 0.05% NaN ₃ , 40% Glycerol
Purification:	Antigen affinity purification
Conjugation:	Unconjugated
Storage:	Store at -20°C.
Stability:	1 year
Gene Name:	ligand dependent nuclear receptor interacting factor 1
Database Link:	Entrez Gene 55791 Human Q5T3J3
Background:	Represses the ligand-induced transcriptional activity of retinoic acid receptor alpha (RARA). This repression may occur through direct recruitment of histone deacetylases.
Synonyms:	2010012G17Rik; 4933421E11Rik; AI450568; RGD1306520; Rif1



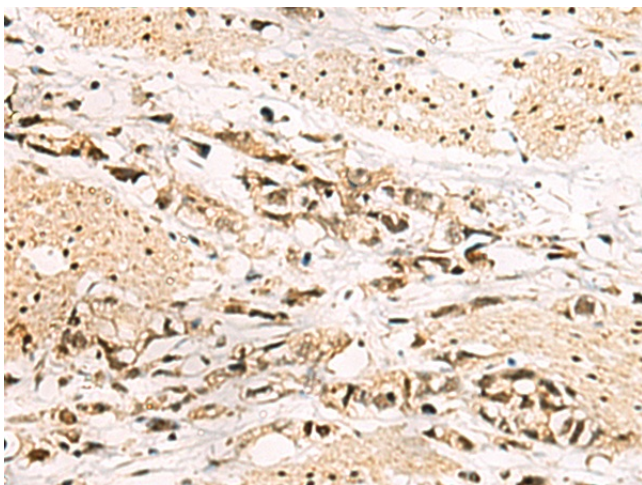
[View online »](#)

Product images:

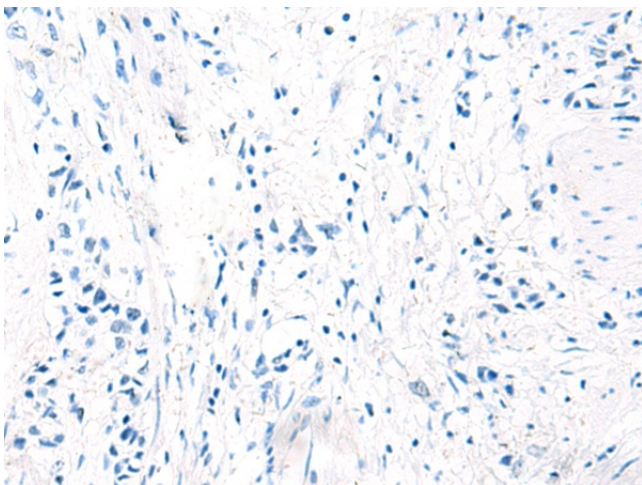
Immunohistochemistry of paraffin-embedded Human ovarian cancer tissue using [TA365549] (LRIF1 Antibody) at dilution 1/70 (Original magnification: $\times 200$)



Immunohistochemistry of paraffin-embedded Human ovarian cancer tissue using [TA365549] (LRIF1 Antibody) at dilution 1/70, treated with fusion protein. (Original magnification: $\times 200$)



Immunohistochemistry of paraffin-embedded Human gastric cancer tissue using [TA365549] (LRIF1 Antibody) at dilution 1/70 (Original magnification: $\times 200$)



Immunohistochemistry of paraffin-embedded Human gastric cancer tissue using [TA365549] (LRIF1 Antibody) at dilution 1/70, treated with fusion protein. (Original magnification: $\times 200$)