

## Product datasheet for **TA365547**

### **C18orf55 (TIMM21) Rabbit Polyclonal Antibody**

#### **Product data:**

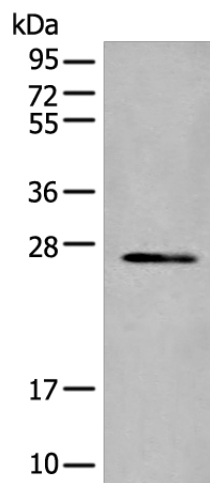
Product Type:	Primary Antibodies
Applications:	IHC, WB
Recommended Dilution:	WB: 200-1000 WB positive control: SKOV3 cell lysate IHC: 20-100 Positive control: Human lung cancer Predicted cell location: Nucleus
Reactivity:	Human
Host:	Rabbit
Isotype:	IgG
Clonality:	Polyclonal
Immunogen:	Fusion protein of human TIMM21
Formulation:	pH7.4 PBS, 0.05% NaN <sub>3</sub> , 40% Glycerol
Concentration:	lot specific
Purification:	Antigen affinity purification
Conjugation:	Unconjugated
Storage:	Store at -20°C.
Stability:	1 year
Predicted Protein Size:	28 kDa
Gene Name:	translocase of inner mitochondrial membrane 21
Database Link:	<a href="#">Entrez Gene 29090 Human Q9BVV7</a>
Background:	Participates in the translocation of transit peptide-containing proteins across the mitochondrial inner membrane. Also required for assembly of mitochondrial respiratory chain complex I and complex IV as component of some MITRAC complex, a cytochrome c oxidase (COX) assembly intermediate complex. TIM21 probably shuttles between the presequence translocase and respiratory-chain assembly intermediates in a process that promotes incorporation of early nuclear-encoded subunits into these complexes.



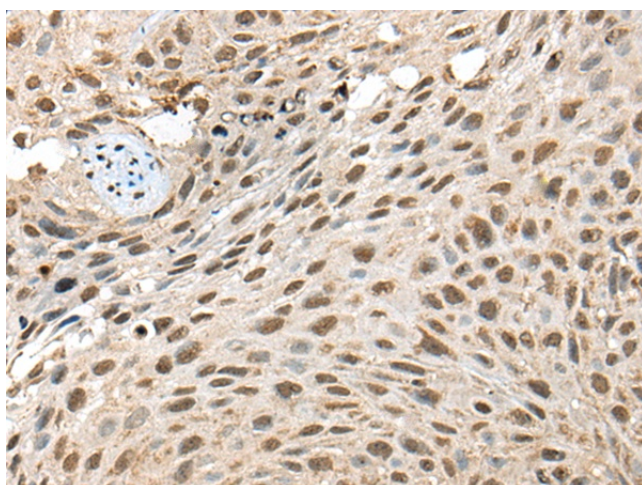
[View online »](#)

Synonyms: 1700034H14Rik; 2700002I20Rik; RGD1307279

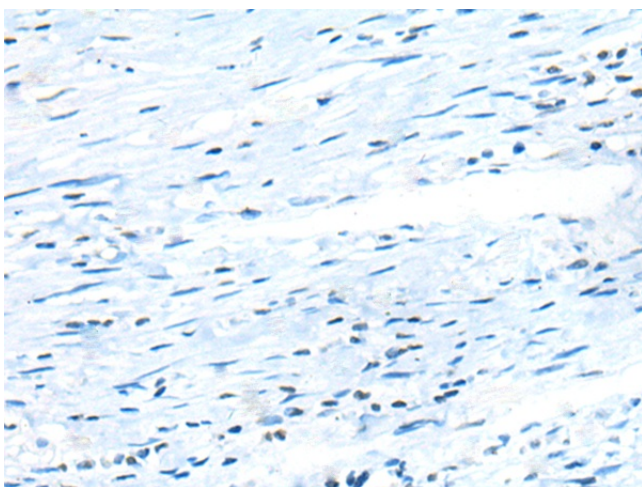
**Product images:**



Gel: 12%SDS-PAGE  
 Lysate: 40 µg  
 Lane: SKOV3 cell lysate  
 Primary antibody: TA365547 (TIMM21 Antibody) at dilution 1/200  
 Secondary antibody: Goat anti rabbit IgG at 1/8000 dilution  
 Exposure time: 1 minute



Immunohistochemistry of paraffin-embedded Human lung cancer tissue using TA365547 (TIMM21 Antibody) at dilution 1/25 (Original magnification: ×200)



Immunohistochemistry of paraffin-embedded Human lung cancer tissue using TA365547 (TIMM21 Antibody) at dilution 1/25, treated with fusion protein. (Original magnification: ×200)