

## Product datasheet for **TA365535S**

### **BTF3L4 Rabbit Polyclonal Antibody**

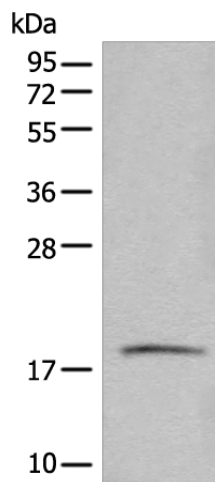
#### **Product data:**

Product Type:	Primary Antibodies
Applications:	IHC, WB
Recommended Dilution:	WB: 200-1000 WB positive control: Hela cell lysate IHC: 25-100 Positive control: Human liver cancer Predicted cell location: Cytoplasm or Nucleus
Reactivity:	Human, Mouse
Host:	Rabbit
Isotype:	IgG
Clonality:	Polyclonal
Immunogen:	Full length fusion protein
Formulation:	pH7.4 PBS, 0.05% NaN <sub>3</sub> , 40% Glycerol
Purification:	Antigen affinity purification
Conjugation:	Unconjugated
Storage:	Store at -20°C.
Stability:	1 year
Predicted Protein Size:	17 kDa
Gene Name:	basic transcription factor 3-like 4
Database Link:	<a href="#">Entrez Gene 91408 Human</a> <a href="#">Q96K17</a>
Background:	The function of this protein remains unknown.
Synonyms:	MGC23908; MGC88389; OTTHUMP00000010515; RP4-800M22.5

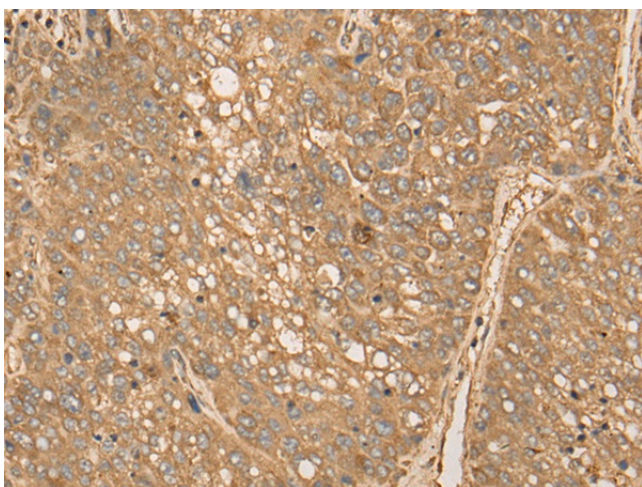


[View online »](#)

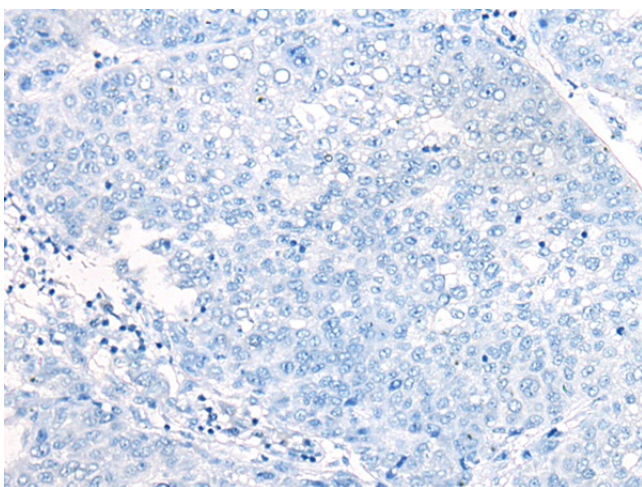
## Product images:



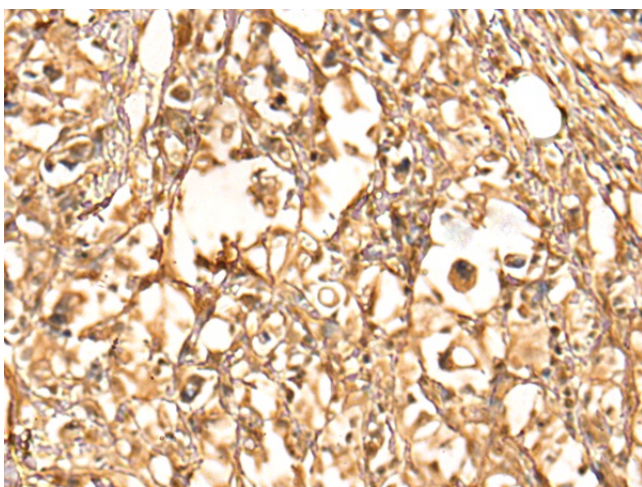
Gel: 12%SDS-PAGE  
Lysate: 40 µg  
Lane: HeLa cell lysate  
Primary antibody: [TA365535] (BTF3L4 Antibody) at dilution 1/200  
Secondary antibody: Goat anti rabbit IgG at 1/8000 dilution  
Exposure time: 90 seconds



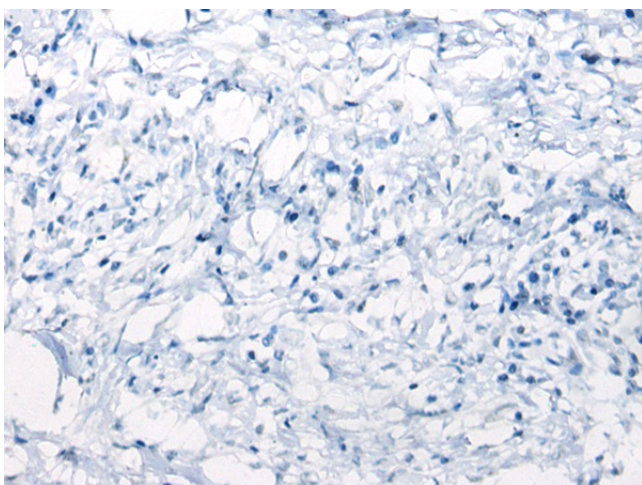
Immunohistochemistry of paraffin-embedded Human liver cancer tissue using [TA365535] (BTF3L4 Antibody) at dilution 1/30 (Original magnification: ×200)



Immunohistochemistry of paraffin-embedded Human liver cancer tissue using [TA365535] (BTF3L4 Antibody) at dilution 1/30, treated with fusion protein. (Original magnification: ×200)



Immunohistochemistry of paraffin-embedded Human gastric cancer tissue using [TA365535] (BTF3L4 Antibody) at dilution 1/30 (Original magnification: ×200)



Immunohistochemistry of paraffin-embedded Human gastric cancer tissue using [TA365535] (BTF3L4 Antibody) at dilution 1/30, treated with fusion protein. (Original magnification: ×200)