

## Product datasheet for **TA365514**

### **BCL6B Rabbit Polyclonal Antibody**

#### **Product data:**

Product Type:	Primary Antibodies
Applications:	IHC
Recommended Dilution:	IHC: 25-100 Positive control: Human ovarian cancer Predicted cell location: Nucleus
Reactivity:	Human, Mouse
Host:	Rabbit
Isotype:	IgG
Clonality:	Polyclonal
Immunogen:	Fusion protein of human BCL6B
Formulation:	pH7.4 PBS, 0.05% NaN <sub>3</sub> , 40% Glycerol
Concentration:	lot specific
Purification:	Antigen affinity purification
Conjugation:	Unconjugated
Storage:	Store at -20°C.
Stability:	1 year
Gene Name:	B-cell CLL/lymphoma 6B
Database Link:	<a href="#">Entrez Gene 255877 Human Q8N143</a>



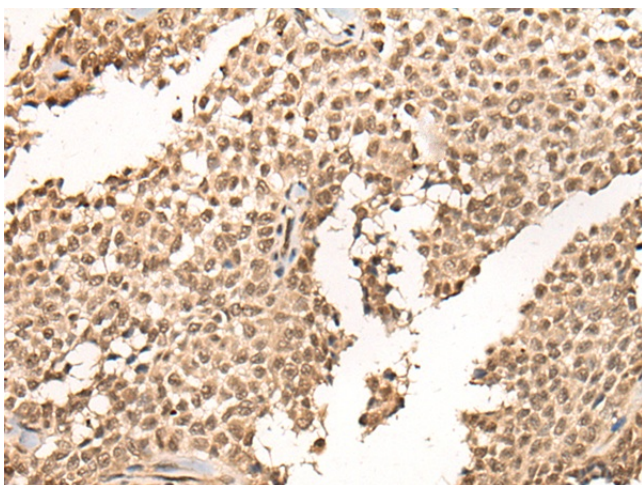
[View online »](#)

**Background:**

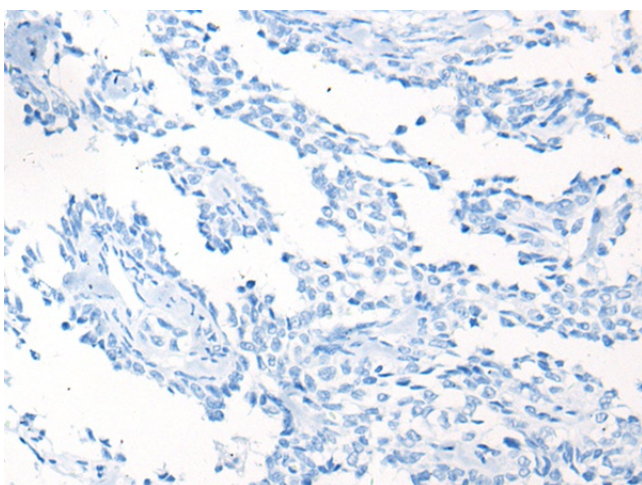
Bcl-6, a transcriptional repressor, binds Stat recognition-like DNA elements and influences germinal center development and cell differentiation. Additionally, Bcl-6 negatively regulates NF $\kappa$ B expression, thereby inhibiting NF $\kappa$ B-mediated cellular functions. Bcl-6b (B-cell CLL/lymphoma 6, member B), also known as ZNF62, BAZF or ZBTB28, is a 480 amino acid nuclear protein that contains one BTB (POZ) domain and five C2H2-type zinc fingers. Expressed ubiquitously with highest expression in placenta and heart, Bcl-6b associates with Bcl-6 and functions as a sequence-specific transcriptional repressor that is thought to be necessary for early B-cell development. The gene encoding Bcl-6b maps to human chromosome 17, which comprises over 2.5% of the human genome and encodes over 1,200 genes.

**Synonyms:**

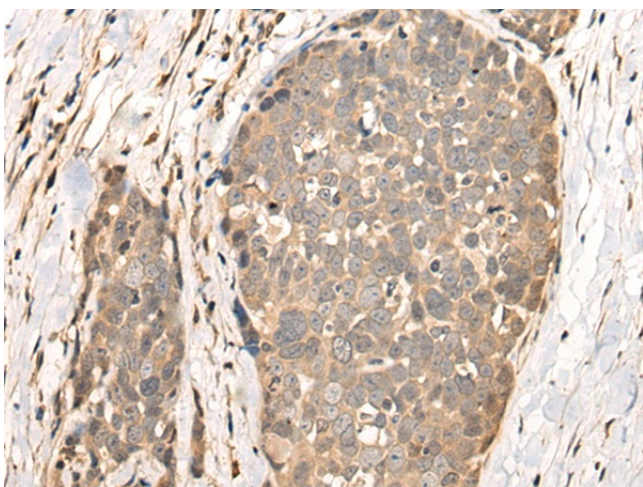
BAZF; ZBTB28; ZNF62

**Product images:**

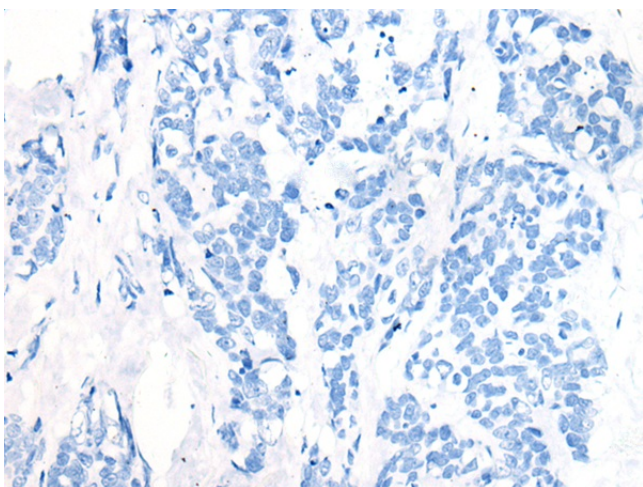
Immunohistochemistry of paraffin-embedded Human ovarian cancer tissue using TA365514 (BCL6B Antibody) at dilution 1/30 (Original magnification:  $\times 200$ )



Immunohistochemistry of paraffin-embedded Human ovarian cancer tissue using TA365514 (BCL6B Antibody) at dilution 1/30, treated with fusion protein. (Original magnification:  $\times 200$ )



Immunohistochemistry of paraffin-embedded Human thyroid cancer tissue using TA365514 (BCL6B Antibody) at dilution 1/30 (Original magnification:  $\times 200$ )



Immunohistochemistry of paraffin-embedded Human thyroid cancer tissue using TA365514 (BCL6B Antibody) at dilution 1/30, treated with fusion protein. (Original magnification:  $\times 200$ )