

## Product datasheet for **TA365512**

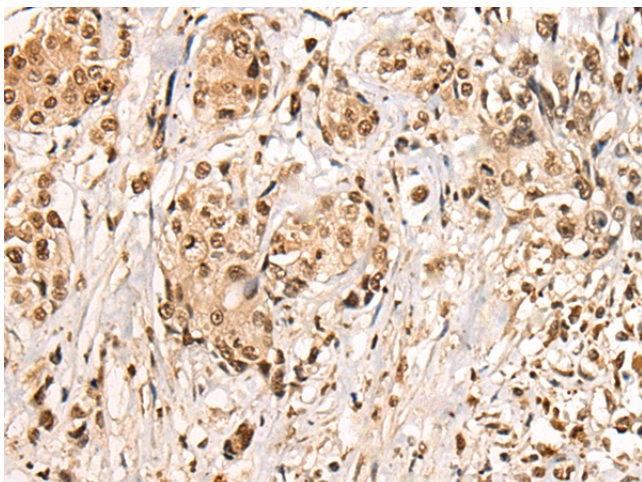
### BBX Rabbit Polyclonal Antibody

#### Product data:

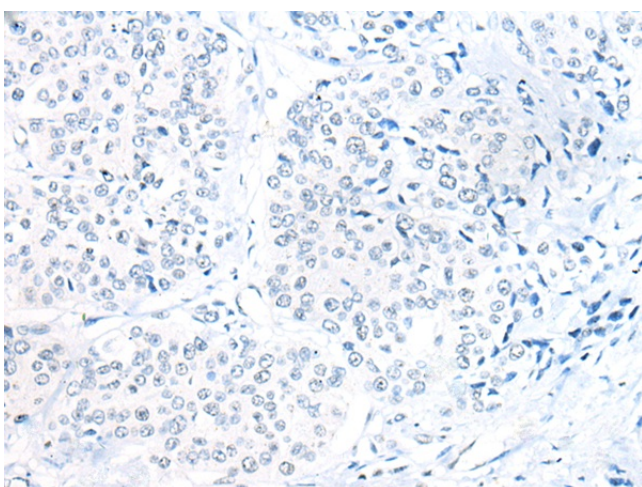
Product Type:	Primary Antibodies
Applications:	IHC
Recommended Dilution:	IHC: 20-100 Positive control: Human prostate cancer Predicted cell location: Nucleus
Reactivity:	Human
Host:	Rabbit
Isotype:	IgG
Clonality:	Polyclonal
Immunogen:	Fusion protein of human BBX
Formulation:	pH7.4 PBS, 0.05% NaN <sub>3</sub> , 40% Glycerol
Concentration:	lot specific
Purification:	Antigen affinity purification
Conjugation:	Unconjugated
Storage:	Store at -20°C.
Stability:	1 year
Gene Name:	bobby sox homolog (Drosophila)
Database Link:	<a href="#">Entrez Gene 56987 Human Q8WY36</a>
Background:	Transcription factor that is necessary for cell cycle progression from G1 to S phase.
Synonyms:	HBP2; HSPC339; MDS001; OTTHUMP00000197192



[View online »](#)

**Product images:**

Immunohistochemistry of paraffin-embedded Human prostate cancer tissue using TA365512 (BBX Antibody) at dilution 1/30 (Original magnification:  $\times 200$ )



Immunohistochemistry of paraffin-embedded Human prostate cancer tissue using TA365512 (BBX Antibody) at dilution 1/30, treated with fusion protein. (Original magnification:  $\times 200$ )