

Product datasheet for **TA365510S**

BBS1 Rabbit Polyclonal Antibody

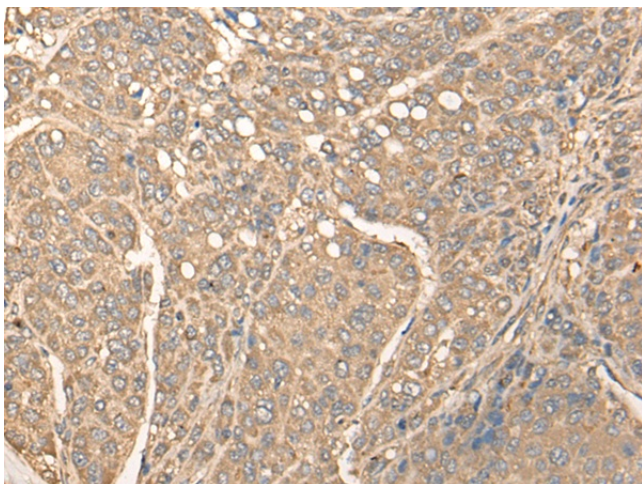
Product data:

Product Type:	Primary Antibodies
Applications:	IHC
Recommended Dilution:	IHC: 25-100 Positive control: Human liver cancer Predicted cell location: Cytoplasm
Reactivity:	Human
Host:	Rabbit
Isotype:	IgG
Clonality:	Polyclonal
Immunogen:	Fusion protein of human BBS1
Formulation:	pH7.4 PBS, 0.05% NaN ₃ , 40% Glycerol
Purification:	Antigen affinity purification
Conjugation:	Unconjugated
Storage:	Store at -20°C.
Stability:	1 year
Gene Name:	Bardet-Biedl syndrome 1
Database Link:	Entrez Gene 582 Human Q8NFJ9
Background:	Mutations in this gene have been observed in patients with the major form (type 1) of Bardet-Biedl syndrome. The encoded protein may play a role in eye, limb, cardiac and reproductive system development.
Synonyms:	BBS2L2; FLJ23590; MGC51114; MGC126183; MGC126184

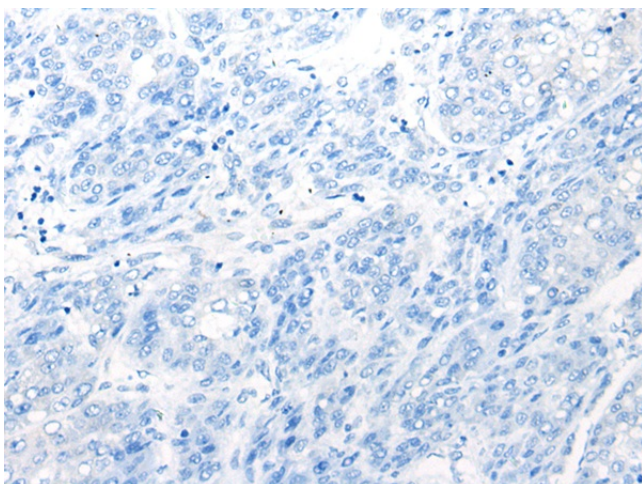


[View online »](#)

Product images:



Immunohistochemistry of paraffin-embedded Human liver cancer tissue using [TA365510] (BBS1 Antibody) at dilution 1/30 (Original magnification: ×200)



Immunohistochemistry of paraffin-embedded Human liver cancer tissue using [TA365510] (BBS1 Antibody) at dilution 1/30, treated with fusion protein. (Original magnification: ×200)