

## Product datasheet for **TA365510**

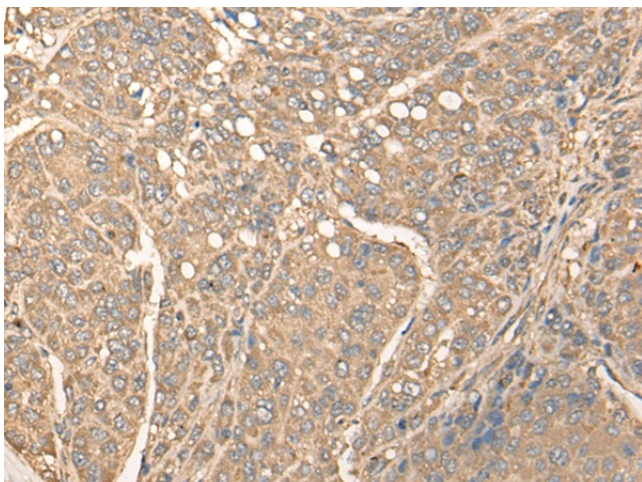
### **BBS1 Rabbit Polyclonal Antibody**

#### **Product data:**

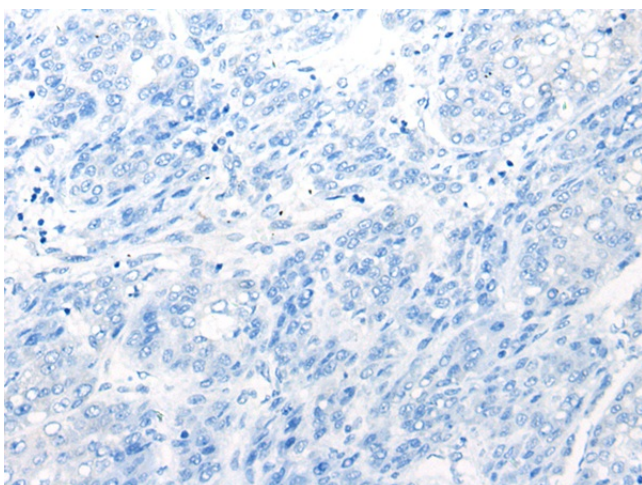
|                       |   |
|-----------------------|---|
| Product Type:         | Primary Antibodies  |
| Applications:         | IHC   |
| Recommended Dilution: | IHC: 25-100<br>Positive control: Human liver cancer<br>Predicted cell location: Cytoplasm   |
| Reactivity:           | Human   |
| Host:                 | Rabbit  |
| Isotype:              | IgG   |
| Clonality:            | Polyclonal  |
| Immunogen:            | Fusion protein of human BBS1  |
| Formulation:          | pH7.4 PBS, 0.05% NaN <sub>3</sub> , 40% Glycerol  |
| Concentration:        | lot specific  |
| Purification:         | Antigen affinity purification   |
| Conjugation:          | Unconjugated  |
| Storage:              | Store at -20°C.   |
| Stability:            | 1 year  |
| Gene Name:            | Bardet-Biedl syndrome 1   |
| Database Link:        | <a href="#">Entrez Gene 582 Human Q8NFJ9</a>  |
| Background:           | Mutations in this gene have been observed in patients with the major form (type 1) of Bardet-Biedl syndrome. The encoded protein may play a role in eye, limb, cardiac and reproductive system development. |
| Synonyms:             | BBS2L2; FLJ23590; MGC51114; MGC126183; MGC126184  |



[View online »](#)

**Product images:**

Immunohistochemistry of paraffin-embedded Human liver cancer tissue using TA365510 (BBS1 Antibody) at dilution 1/30 (Original magnification: ×200)



Immunohistochemistry of paraffin-embedded Human liver cancer tissue using TA365510 (BBS1 Antibody) at dilution 1/30, treated with fusion protein. (Original magnification: ×200)