

Product datasheet for **TA365509**

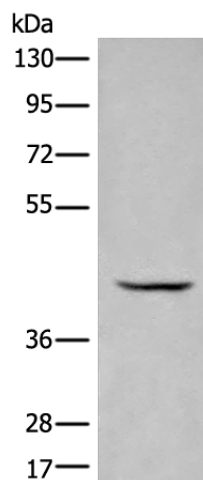
BBOX1 Rabbit Polyclonal Antibody

Product data:

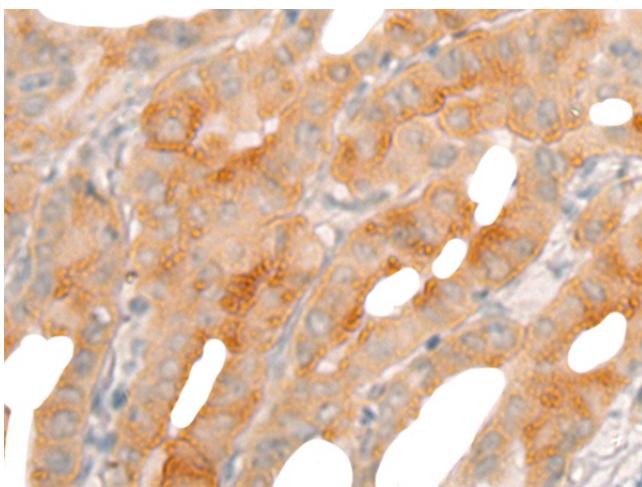
| | |
|--------------------------------|--|
| Product Type: | Primary Antibodies |
| Applications: | IHC, WB |
| Recommended Dilution: | WB: 500-2000 WB positive control: Human kidney tissue lysate IHC: 40-200 Positive control: Human thyroid cancer Predicted cell location: Cytoplasm |
| Reactivity: | Human, Mouse, Rat |
| Host: | Rabbit |
| Isotype: | IgG |
| Clonality: | Polyclonal |
| Immunogen: | Fusion protein of human BBOX1 |
| Formulation: | pH7.4 PBS, 0.05% NaN ₃ , 40% Glycerol |
| Concentration: | lot specific |
| Purification: | Antigen affinity purification |
| Conjugation: | Unconjugated |
| Storage: | Store at -20°C. |
| Stability: | 1 year |
| Predicted Protein Size: | 45 kDa |
| Gene Name: | gamma-butyrobetaine hydroxylase 1 |
| Database Link: | Entrez Gene 8424 Human O75936 |
| Background: | This gene encodes gamma butyrobetaine hydroxylase which catalyzes the formation of L-carnitine from gamma-butyrobetaine, the last step in the L-carnitine biosynthetic pathway. Carnitine is essential for the transport of activated fatty acids across the mitochondrial membrane during mitochondrial beta-oxidation. |
| Synonyms: | BBH; BBOX; G-BBH; Gamma-BBH |



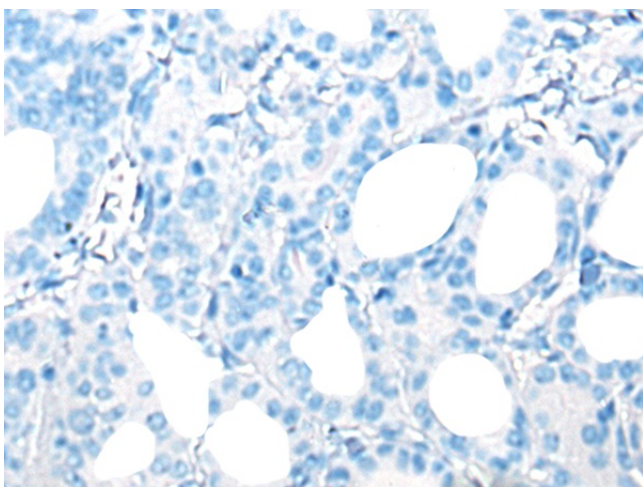
[View online »](#)

Product images:

Gel: 8%SDS-PAGE
Lysate: 40 µg
Lane: Human kidney tissue lysate
Primary antibody: TA365509 (BBOX1 Antibody) at dilution 1/650
Secondary antibody: Goat anti rabbit IgG at 1/8000 dilution
Exposure time: 10 seconds



Immunohistochemistry of paraffin-embedded Human thyroid cancer tissue using TA365509 (BBOX1 Antibody) at dilution 1/50 (Original magnification: ×200)



Immunohistochemistry of paraffin-embedded Human thyroid cancer tissue using TA365509 (BBOX1 Antibody) at dilution 1/50, treated with fusion protein. (Original magnification: ×200)