

Product datasheet for **TA365506S**

BAIAP2L1 Rabbit Polyclonal Antibody

Product data:

| | |
|-------------------------|---|
| Product Type: | Primary Antibodies |
| Applications: | IHC, WB |
| Recommended Dilution: | WB: 500-2000 WB positive control: HEPG2, HeLa, A172, A549 and A431 cell lysates IHC: 25-100 Positive control: Human esophagus cancer Predicted cell location: Cytoplasm |
| Reactivity: | Human, Mouse, Rat |
| Host: | Rabbit |
| Isotype: | IgG |
| Clonality: | Polyclonal |
| Immunogen: | Fusion protein of human BAIAP2L1 |
| Formulation: | pH7.4 PBS, 0.05% NaN ₃ , 40% Glycerol |
| Purification: | Antigen affinity purification |
| Conjugation: | Unconjugated |
| Storage: | Store at -20°C. |
| Stability: | 1 year |
| Predicted Protein Size: | 57 kDa |
| Gene Name: | BAI1 associated protein 2 like 1 |
| Database Link: | Entrez Gene 55971 Human Q9UHR4 |



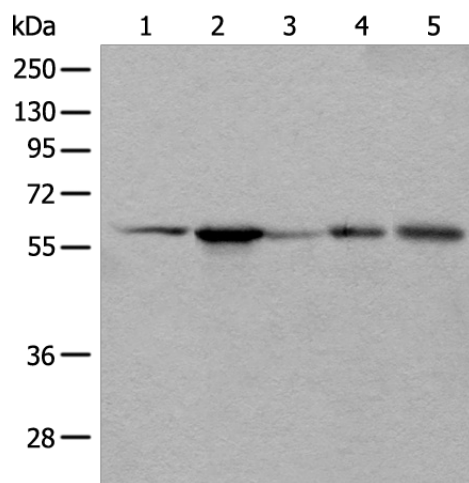
[View online »](#)

Background:

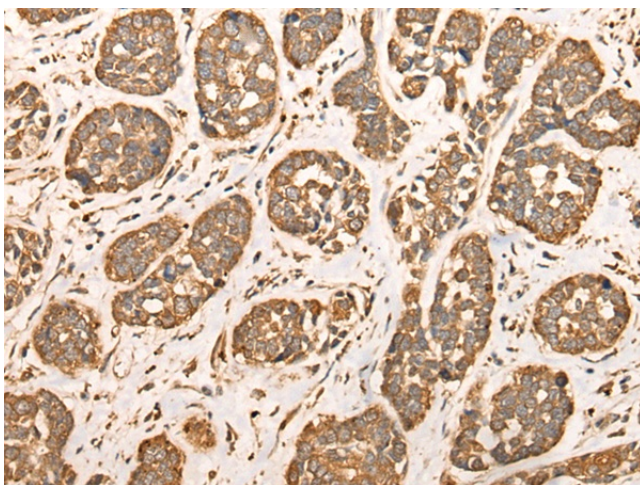
This gene encodes a member of the IMD (IRSp53/MIM homology domain) family. Members of this family can be subdivided in two groups, the IRSp53-like and MIM-like, based on the presence or absence of the SH3 (Src homology 3) domain. The protein encoded by this gene contains a conserved IMD, also known as F-actin bundling domain, at the N-terminus, and a canonical SH3 domain near the C-terminus, so it belongs to the IRSp53-like group. This protein is the substrate for insulin receptor tyrosine kinase and binds to the small GTPase Rac. It is involved in signal transduction pathways that link deformation of the plasma membrane and remodeling of the actin cytoskeleton. It also promotes actin assembly and membrane protrusions when overexpressed in mammalian cells, and is essential to the formation of a potent actin assembly complex during EHEC (Enterohemorrhagic Escherichia coli) pedestal formation.

Synonyms:

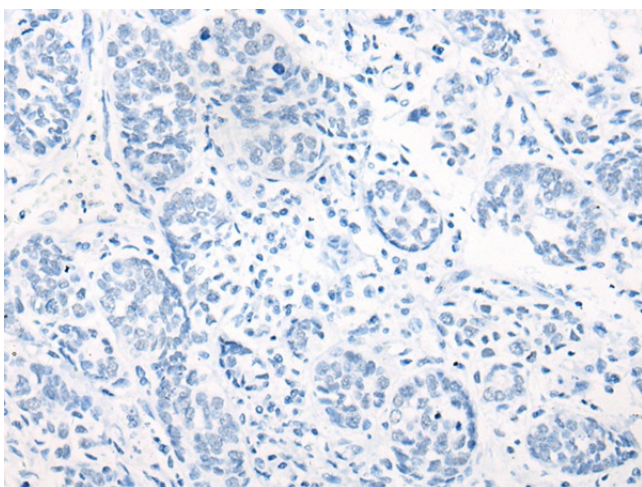
FLJ42275; IRTKS

Product images:


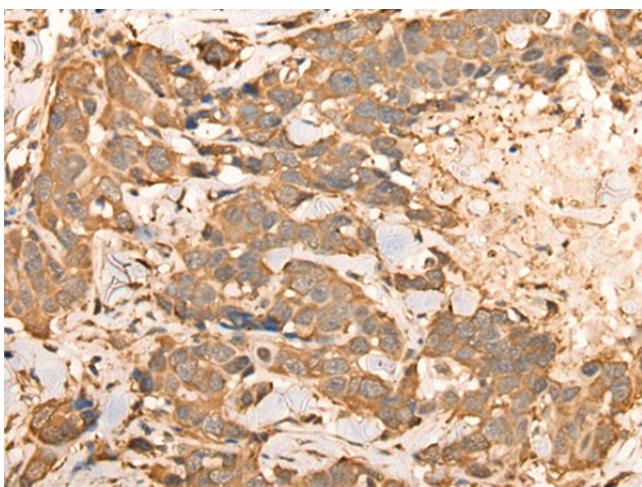
Gel: 8%SDS-PAGE
 Lysate: 40 µg
 Lane 1-5: HEPG2
 HeLa
 A172
 A549 and A431 cell lysates
 Primary antibody: [TA365506] (BAIAP2L1 Antibody) at dilution 1/800
 Secondary antibody: Goat anti rabbit IgG at 1/8000 dilution
 Exposure time: 1 second



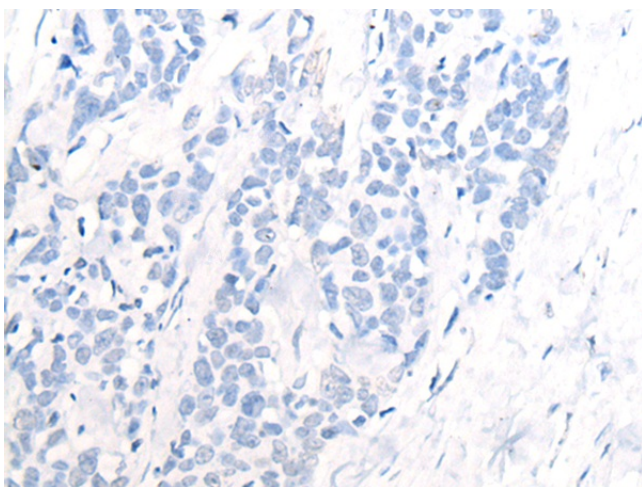
Immunohistochemistry of paraffin-embedded Human esophagus cancer tissue using [TA365506] (BAIAP2L1 Antibody) at dilution 1/30 (Original magnification: ×200)



Immunohistochemistry of paraffin-embedded Human esophagus cancer tissue using [TA365506] (BAIAP2L1 Antibody) at dilution 1/30, treated with fusion protein. (Original magnification: ×200)



Immunohistochemistry of paraffin-embedded Human thyroid cancer tissue using [TA365506] (BAIAP2L1 Antibody) at dilution 1/30 (Original magnification: ×200)



Immunohistochemistry of paraffin-embedded Human thyroid cancer tissue using [TA365506] (BAIAP2L1 Antibody) at dilution 1/30, treated with fusion protein. (Original magnification: ×200)