

Product datasheet for **TA365502S**

ATP5F1C Rabbit Polyclonal Antibody

Product data:

Product Type:	Primary Antibodies
Applications:	IHC, WB
Recommended Dilution:	WB: 1000-5000 WB positive control: Human heart tissue, A549, 231, Jurkat, HEPG2 and Hela cell lysates IHC: 40-200 Positive control: Human liver cancer Predicted cell location: Cytoplasm
Reactivity:	Human, Mouse, Rat
Host:	Rabbit
Isotype:	IgG
Clonality:	Polyclonal
Immunogen:	Fusion protein of human ATP5F1C
Formulation:	pH7.4 PBS, 0.05% NaN ₃ , 40% Glycerol
Purification:	Antigen affinity purification
Conjugation:	Unconjugated
Storage:	Store at -20°C.
Stability:	1 year
Predicted Protein Size:	33 kDa
Gene Name:	ATP synthase, H ⁺ transporting, mitochondrial F1 complex, gamma polypeptide 1
Database Link:	Entrez Gene 509 Human P36542



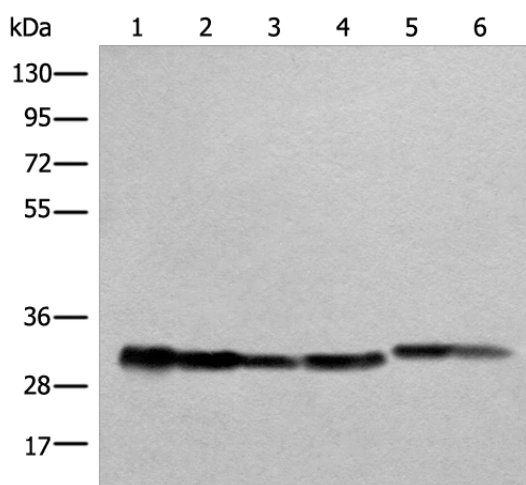
[View online »](#)

Background:

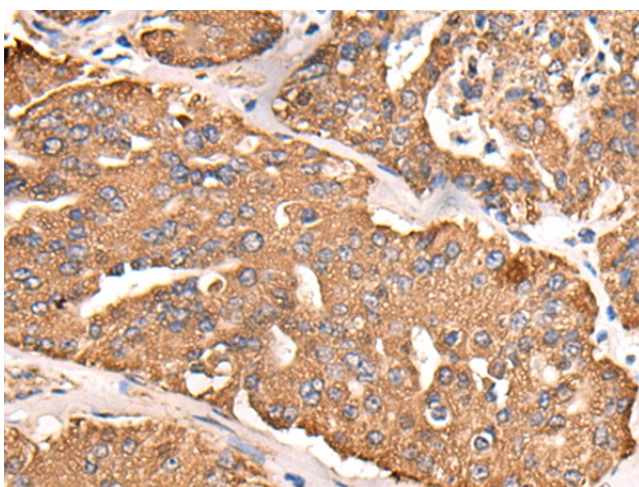
This gene encodes a subunit of mitochondrial ATP synthase. Mitochondrial ATP synthase catalyzes ATP synthesis, utilizing an electrochemical gradient of protons across the inner membrane during oxidative phosphorylation. ATP synthase is composed of two linked multi-subunit complexes: the soluble catalytic core, F₁, and the membrane-spanning component, F_o, comprising the proton channel. The catalytic portion of mitochondrial ATP synthase consists of 5 different subunits (alpha, beta, gamma, delta, and epsilon) assembled with a stoichiometry of 3 alpha, 3 beta, and a single representative of the other 3. The proton channel consists of three main subunits (a, b, c). This gene encodes the gamma subunit of the catalytic core. Alternatively spliced transcript variants encoding different isoforms have been identified. This gene also has a pseudogene on chromosome 14. [provided by RefSeq, Jul 2008]

Synonyms:

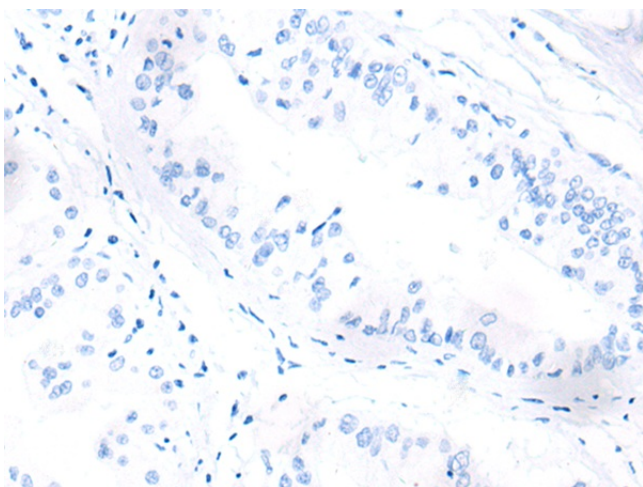
ATP5C; ATP5CL1

Product images:


Gel: 8%SDS-PAGE
 Lysate: 40 µg
 Lane 1-6: Human heart tissue
 A549
 231
 Jurkat
 HEPG2 and Hela cell lysates
 Primary antibody: [TA365502] (ATP5F1C Antibody) at dilution 1/1000
 Secondary antibody: Goat anti rabbit IgG at 1/8000 dilution
 Exposure time: 5 seconds



Immunohistochemistry of paraffin-embedded Human liver cancer tissue using [TA365502] (ATP5F1C Antibody) at dilution 1/55 (Original magnification: ×200)



Immunohistochemistry of paraffin-embedded Human liver cancer tissue using [TA365502] (ATP5F1C Antibody) at dilution 1/55, treated with fusion protein. (Original magnification: $\times 200$)