

## Product datasheet for **TA365496S**

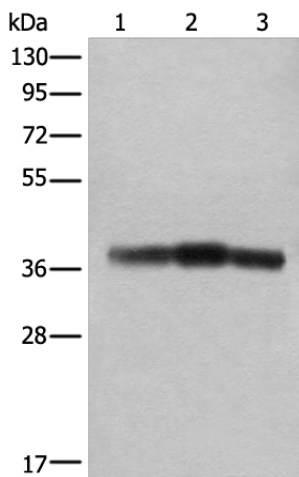
### ATAD1 Rabbit Polyclonal Antibody

#### Product data:

Product Type:	Primary Antibodies
Applications:	IHC, WB
Recommended Dilution:	WB: 500-2000 WB positive control: Rat brain tissue, Mouse brain tissue and Human cerebrum tissue lysates IHC: 50-300 Positive control: Human liver cancer Predicted cell location: Cytoplasm or Nucleus
Reactivity:	Human, Mouse, Rat
Host:	Rabbit
Isotype:	IgG
Clonality:	Polyclonal
Immunogen:	Fusion protein of human ATAD1
Formulation:	pH7.4 PBS, 0.05% NaN <sub>3</sub> , 40% Glycerol
Purification:	Antigen affinity purification
Conjugation:	Unconjugated
Storage:	Store at -20°C.
Stability:	1 year
Predicted Protein Size:	41 kDa
Gene Name:	ATPase family, AAA domain containing 1
Database Link:	<a href="#">Entrez Gene 84896 Human Q8NBU5</a>
Background:	ATPase that plays a critical role in regulating the surface expression of AMPA receptors (AMPA), thereby regulating synaptic plasticity and learning and memory. Required for NMDA-stimulated AMPAR internalization and inhibition of GRIA1 and GRIA2 recycling back to the plasma membrane; these activities are ATPase-dependent (By similarity).
Synonyms:	AFDC1; FLJ14600; FNP001; OTTHUMP00000020031



[View online »](#)

**Product images:**

Gel: 8%SDS-PAGE

Lysate: 40  $\mu$ g

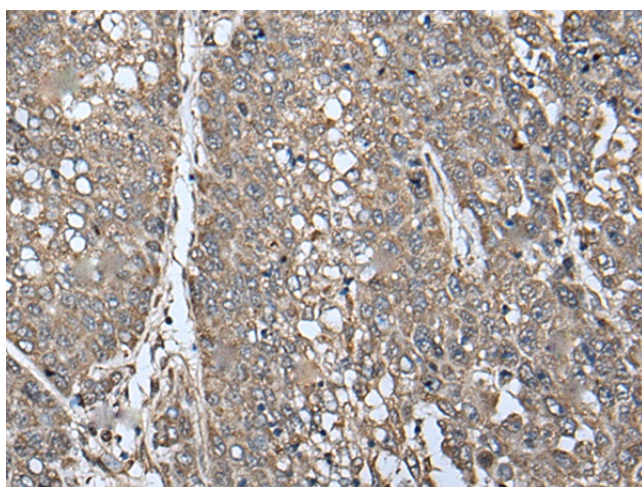
Lane 1-3: Rat brain tissue

Mouse brain tissue and Human cerebrum tissue lysates

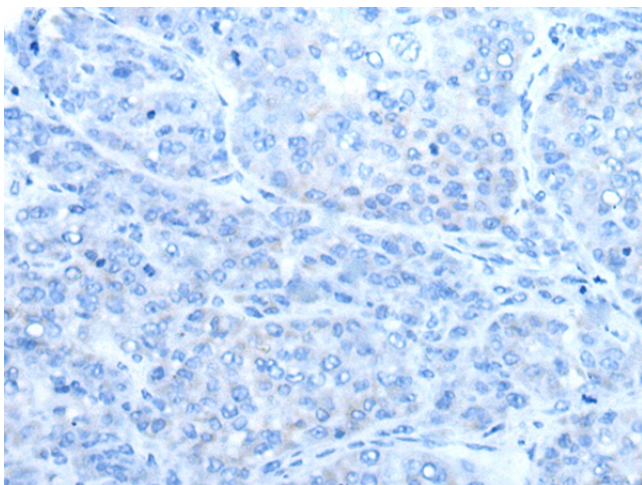
Primary antibody: [TA365496] (ATAD1 Antibody) at dilution 1/800

Secondary antibody: Goat anti rabbit IgG at 1/8000 dilution

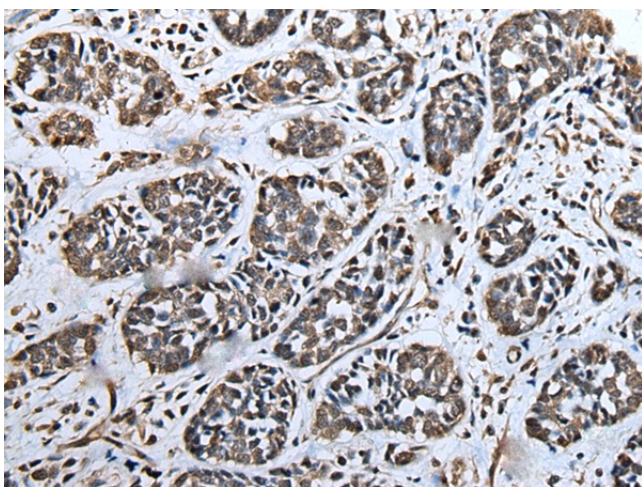
Exposure time: 60 seconds



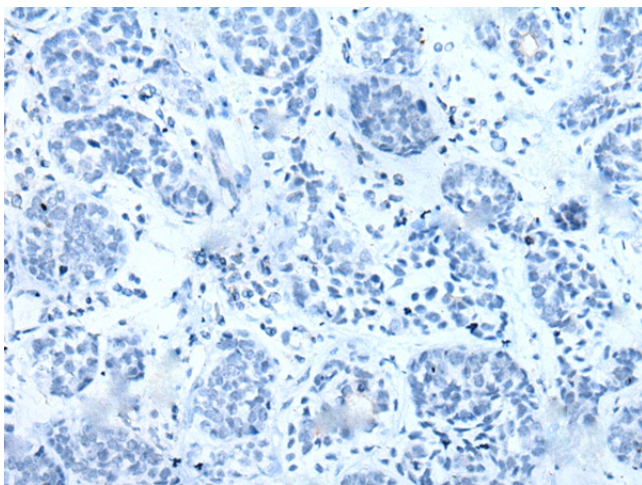
Immunohistochemistry of paraffin-embedded Human liver cancer tissue using [TA365496] (ATAD1 Antibody) at dilution 1/65 (Original magnification:  $\times 200$ )



Immunohistochemistry of paraffin-embedded Human liver cancer tissue using [TA365496] (ATAD1 Antibody) at dilution 1/65, treated with fusion protein. (Original magnification:  $\times 200$ )



Immunohistochemistry of paraffin-embedded Human esophagus cancer tissue using [TA365496] (ATAD1 Antibody) at dilution 1/65 (Original magnification:  $\times 200$ )



Immunohistochemistry of paraffin-embedded Human esophagus cancer tissue using [TA365496] (ATAD1 Antibody) at dilution 1/65, treated with fusion protein. (Original magnification:  $\times 200$ )