

Product datasheet for **TA365484S**

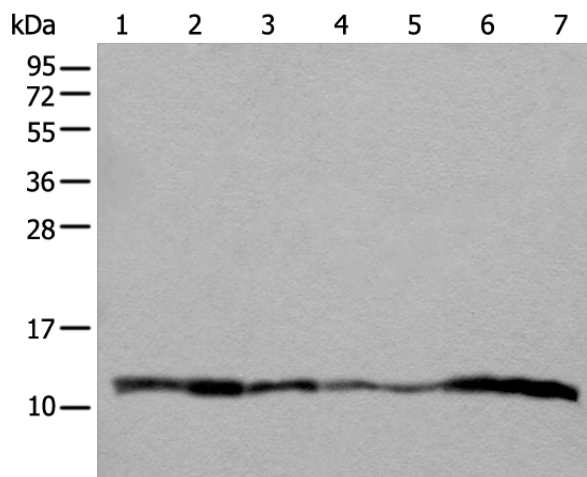
UQCRQ Rabbit Polyclonal Antibody

Product data:

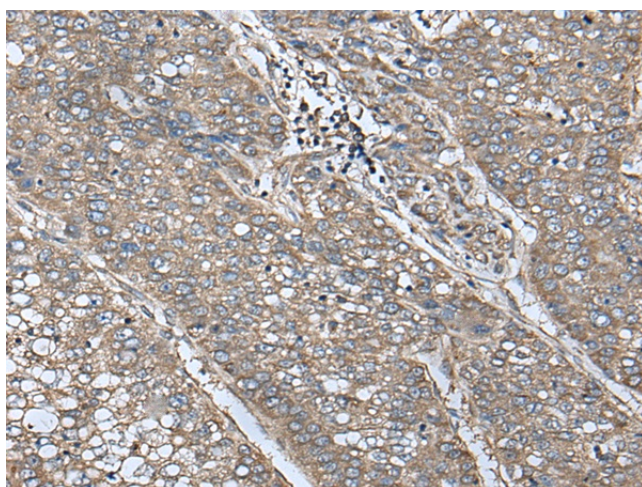
Product Type:	Primary Antibodies
Applications:	IHC, WB
Recommended Dilution:	WB: 500-2000 WB positive control: 293T□A549□Hela and 231 cell□Human placenta tissue□HEPG2 cell□Human fetal liver tissue lysates IHC: 40-200 Positive control: Human liver cancer Predicted cell location: Cytoplasm
Reactivity:	Human, Rat
Host:	Rabbit
Isotype:	IgG
Clonality:	Polyclonal
Immunogen:	Full length fusion protein
Formulation:	pH7.4 PBS, 0.05% NaN ₃ , 40% Glycerol
Purification:	Antigen affinity purification
Conjugation:	Unconjugated
Storage:	Store at -20°C.
Stability:	1 year
Predicted Protein Size:	10 kDa
Gene Name:	ubiquinol-cytochrome c reductase complex III subunit VII
Database Link:	Entrez Gene 27089 Human O14949
Background:	This gene encodes a ubiquinone-binding protein of low molecular mass. This protein is a small core-associated protein and a subunit of ubiquinol-cytochrome c reductase complex III, which is part of the mitochondrial respiratory chain.
Synonyms:	OTTHUMP00000066206; OTTHUMP00000066207; QCR8; QP-C; QPC



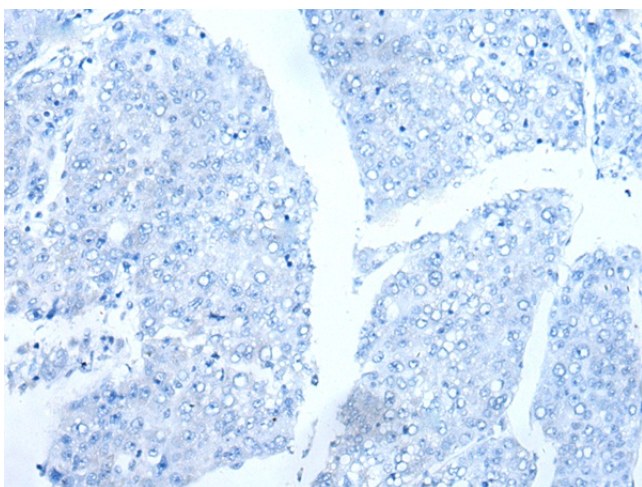
[View online »](#)

Product images:

Gel: 12%SDS-PAGE
Lysate: 40 μ g
Lane 1-7: 293T
A549
Hela and 231 cell
Human placenta tissue
HEPG2 cell
Human fetal liver tissue lysates
Primary antibody: [TA365484] (UQCRQ Antibody)
at dilution 1/400
Secondary antibody: Goat anti rabbit IgG at
1/8000 dilution
Exposure time: 5 seconds



Immunohistochemistry of paraffin-embedded
Human liver cancer tissue using [TA365484]
(UQCRQ Antibody) at dilution 1/50 (Original
magnification: \times 200)



Immunohistochemistry of paraffin-embedded Human liver cancer tissue using [TA365484] (UQCRQ Antibody) at dilution 1/50, treated with fusion protein. (Original magnification: ×200)