

## Product datasheet for **TA365475S**

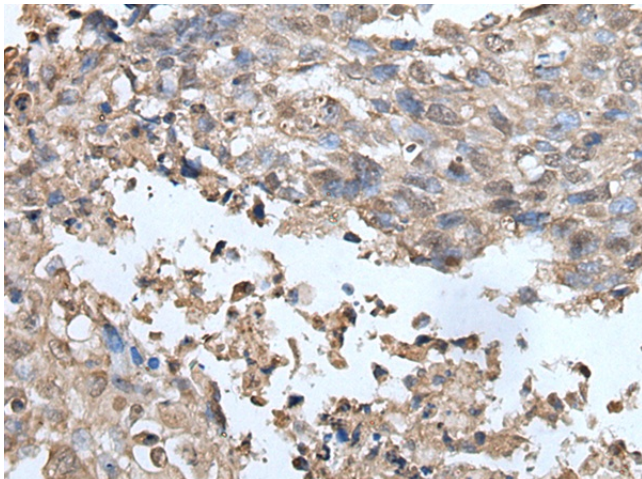
### **UBOX5 Rabbit Polyclonal Antibody**

#### **Product data:**

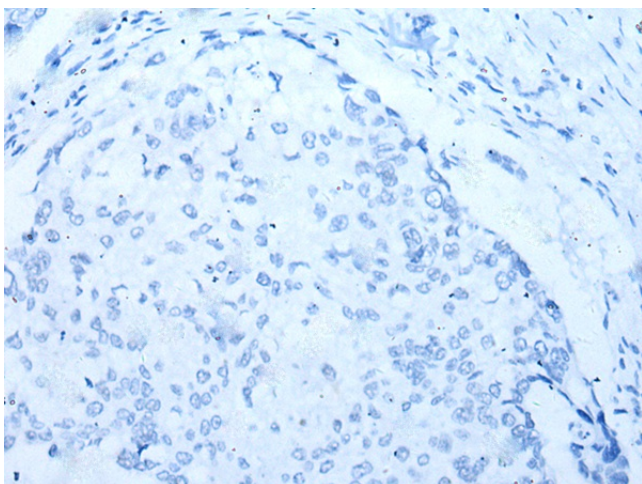
<b>Product Type:</b>	Primary Antibodies
<b>Applications:</b>	IHC
<b>Recommended Dilution:</b>	IHC: 25-100 Positive control: Human lung cancer Predicted cell location: Nucleus
<b>Reactivity:</b>	Human
<b>Host:</b>	Rabbit
<b>Isotype:</b>	IgG
<b>Clonality:</b>	Polyclonal
<b>Immunogen:</b>	Fusion protein of human UBOX5
<b>Formulation:</b>	pH7.4 PBS, 0.05% NaN <sub>3</sub> , 40% Glycerol
<b>Purification:</b>	Antigen affinity purification
<b>Conjugation:</b>	Unconjugated
<b>Storage:</b>	Store at -20°C.
<b>Stability:</b>	1 year
<b>Gene Name:</b>	U-box domain containing 5
<b>Database Link:</b>	<a href="#">Entrez Gene 22888 Human O94941</a>
<b>Background:</b>	This gene encodes a U-box domain containing protein. The encoded protein interacts with E2 enzymes and may play a role in the ubiquitination pathway. Alternate splicing results in multiple transcript variants.
<b>Synonyms:</b>	KIAA0860; RNF37; Ubce7ip5; UIP5



[View online »](#)

**Product images:**

Immunohistochemistry of paraffin-embedded Human lung cancer tissue using [TA365475] (UBOX5 Antibody) at dilution 1/30 (Original magnification: x200)



Immunohistochemistry of paraffin-embedded Human lung cancer tissue using [TA365475] (UBOX5 Antibody) at dilution 1/30, treated with fusion protein. (Original magnification: x200)