

## Product datasheet for **TA365468**

### MMS2 (UBE2V2) Rabbit Polyclonal Antibody

#### Product data:

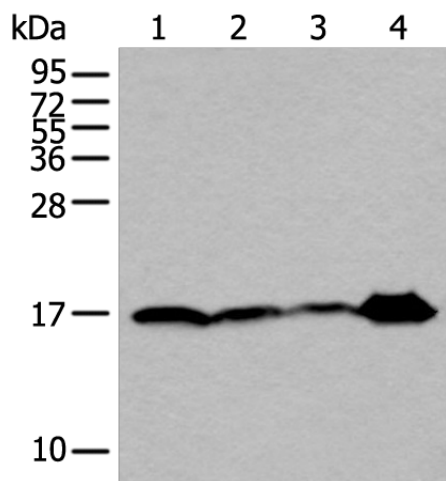
Product Type:	Primary Antibodies
Applications:	IHC, WB
Recommended Dilution:	WB: 200-1000 WB positive control: K562, Jurkat and A375 cell, Human fetal brain tissue lysates IHC: 25-100 Positive control: Human lung cancer Predicted cell location: Cytoplasm and Nucleus
Reactivity:	Human, Mouse, Rat
Host:	Rabbit
Isotype:	IgG
Clonality:	Polyclonal
Immunogen:	Full length fusion protein
Formulation:	pH7.4 PBS, 0.05% NaN <sub>3</sub> , 40% Glycerol
Concentration:	lot specific
Purification:	Antigen affinity purification
Conjugation:	Unconjugated
Storage:	Store at -20°C.
Stability:	1 year
Predicted Protein Size:	16 kDa
Gene Name:	ubiquitin conjugating enzyme E2 V2
Database Link:	<a href="#">Entrez Gene 7336 Human Q15819</a>
Background:	Ubiquitin-conjugating enzyme E2 variant proteins constitute a distinct subfamily within the E2 protein family. They have sequence similarity to other ubiquitin-conjugating enzymes but lack the conserved cysteine residue that is critical for the catalytic activity of E2s. The protein encoded by this gene also shares homology with ubiquitin-conjugating enzyme E2 variant 1 and yeast MMS2 gene product. It may be involved in the differentiation of monocytes and enterocytes.



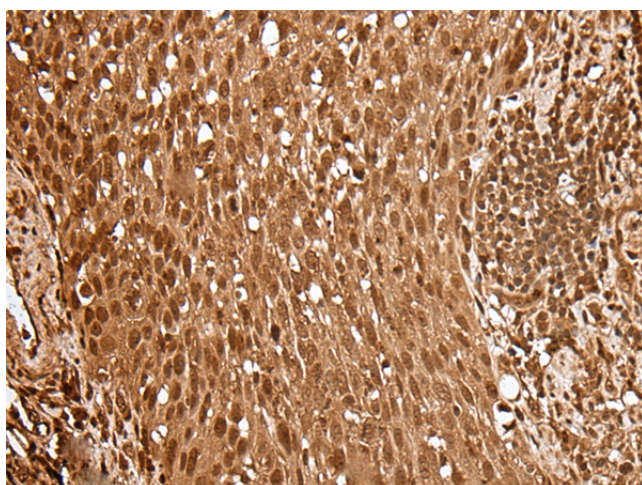
[View online >](#)

Synonyms: DDVit-1; DDVIT1; EDAF-1; EDPF-1; EDPF1; MMS2; UEV-2; UEV2

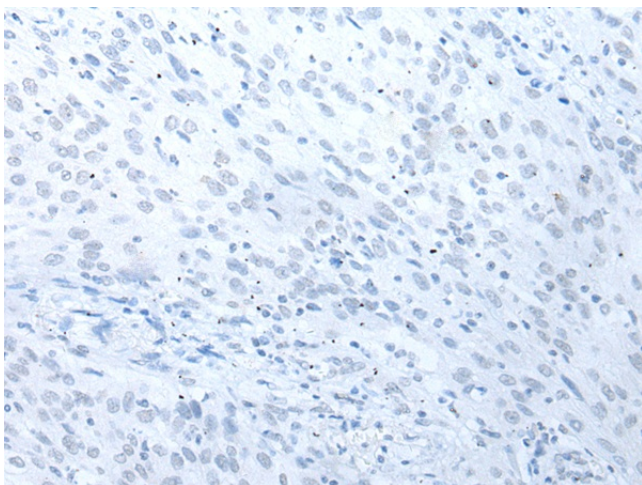
**Product images:**



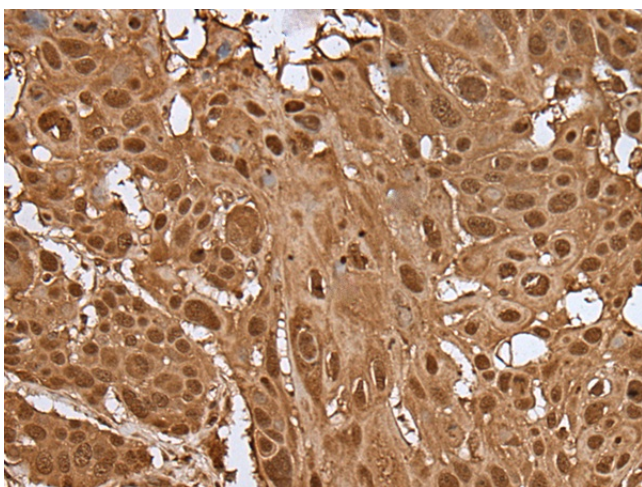
Gel: 12%SDS-PAGE  
 Lysate: 40 µg  
 Lane 1-4: K562  
 Jurkat and A375 cell  
 Human fetal brain tissue lysates  
 Primary antibody: TA365468 (UBE2V2 Antibody)  
 at dilution 1/250  
 Secondary antibody: Goat anti rabbit IgG at  
 1/8000 dilution  
 Exposure time: 10 seconds



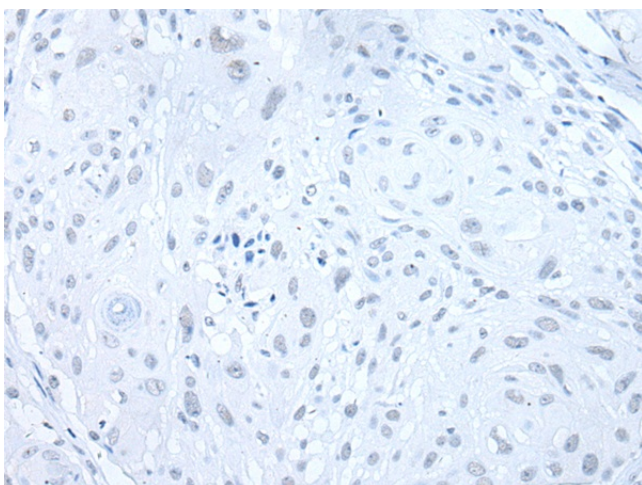
Immunohistochemistry of paraffin-embedded  
 Human lung cancer tissue using TA365468  
 (UBE2V2 Antibody) at dilution 1/30 (Original  
 magnification: x200)



Immunohistochemistry of paraffin-embedded Human lung cancer tissue using TA365468 (UBE2V2 Antibody) at dilution 1/30, treated with fusion protein. (Original magnification: ×200)



Immunohistochemistry of paraffin-embedded Human esophagus cancer tissue using TA365468 (UBE2V2 Antibody) at dilution 1/30 (Original magnification: ×200)



Immunohistochemistry of paraffin-embedded Human esophagus cancer tissue using TA365468 (UBE2V2 Antibody) at dilution 1/30, treated with fusion protein. (Original magnification: ×200)