

Product datasheet for **TA365464**

UBE2V1 (TMEM189-UBE2V1) Rabbit Polyclonal Antibody

Product data:

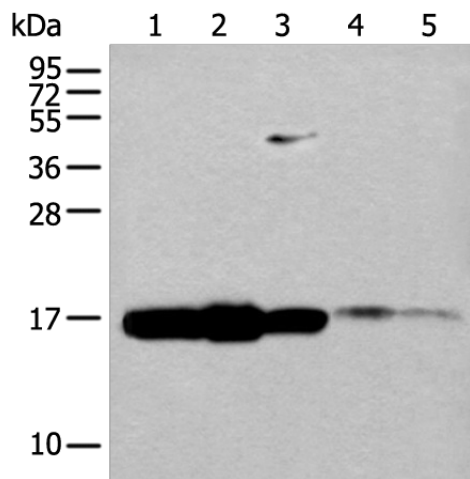
Product Type:	Primary Antibodies
Applications:	IHC, WB
Recommended Dilution:	WB: 500-2000 WB positive control: HT-29 cell, Human fetal brain tissue, 293T cell, Mouse spleen tissue and Human spleen tissue lysates IHC: 30-150 Positive control: Human esophagus cancer Predicted cell location: Nucleus
Reactivity:	Human, Mouse
Host:	Rabbit
Isotype:	IgG
Clonality:	Polyclonal
Immunogen:	Full length fusion protein
Formulation:	pH7.4 PBS, 0.05% NaN ₃ , 40% Glycerol
Concentration:	lot specific
Purification:	Antigen affinity purification
Conjugation:	Unconjugated
Storage:	Store at -20°C.
Stability:	1 year
Predicted Protein Size:	16 kDa
Gene Name:	TMEM189-UBE2V1 readthrough
Database Link:	Entrez Gene 387522 Human Q13404



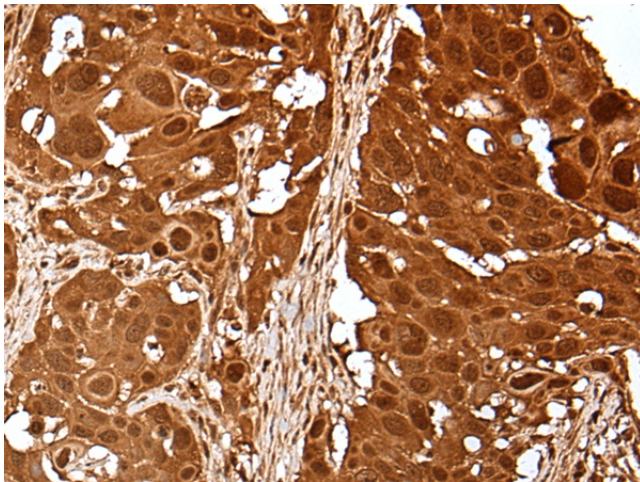
[View online »](#)

Background:

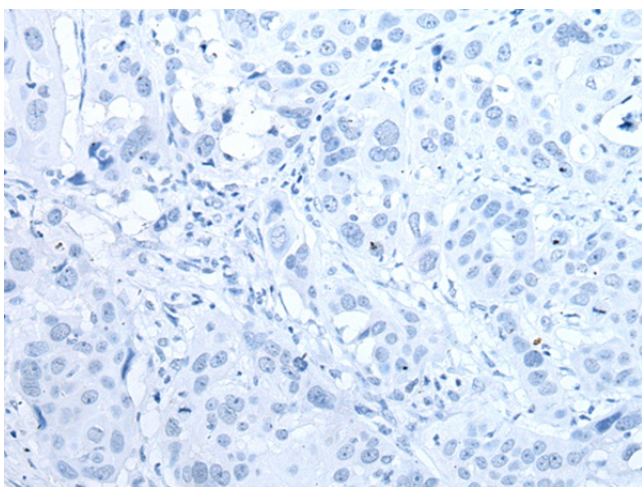
Ubiquitin-conjugating E2 enzyme variant proteins constitute a distinct subfamily within the E2 protein family. They have sequence similarity to other ubiquitin-conjugating enzymes but lack the conserved cysteine residue that is critical for the catalytic activity of E2s. The protein encoded by this gene is located in the nucleus and can cause transcriptional activation of the human FOS proto-oncogene. It is thought to be involved in the control of differentiation by altering cell cycle behavior. Alternatively spliced transcript variants encoding multiple isoforms have been described for this gene, and multiple pseudogenes of this gene have been identified. Co-transcription of this gene and the neighboring upstream gene generates a rare transcript (Kua-UEV), which encodes a fusion protein comprised of sequence sharing identity with each individual gene product.

Product images:


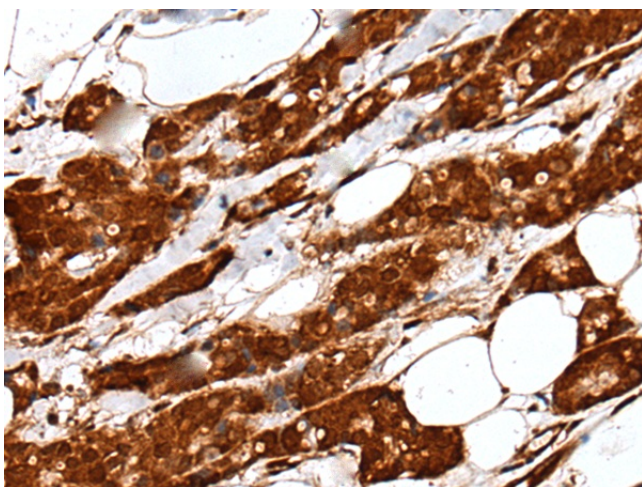
Gel: 12%SDS-PAGE
 Lysate: 40 µg
 Lane 1-5: HT-29 cell
 Human fetal brain tissue
 293T cell
 Mouse spleen tissue and Human spleen tissue lysates
 Primary antibody: TA365464 (UBE2V1 Antibody) at dilution 1/400
 Secondary antibody: Goat anti rabbit IgG at 1/8000 dilution
 Exposure time: 1 minute



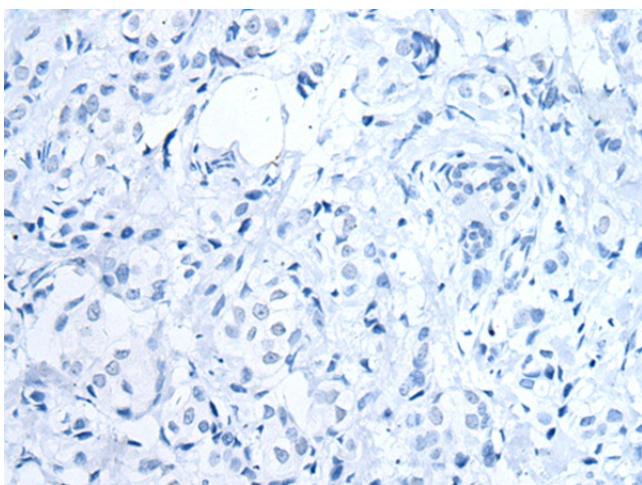
Immunohistochemistry of paraffin-embedded Human esophagus cancer tissue using TA365464 (UBE2V1 Antibody) at dilution 1/40 (Original magnification: ×200)



Immunohistochemistry of paraffin-embedded Human esophagus cancer tissue using TA365464 (UBE2V1 Antibody) at dilution 1/40, treated with fusion protein. (Original magnification: ×200)



Immunohistochemistry of paraffin-embedded Human breast cancer tissue using TA365464 (UBE2V1 Antibody) at dilution 1/40 (Original magnification: ×200)



Immunohistochemistry of paraffin-embedded Human breast cancer tissue using TA365464 (UBE2V1 Antibody) at dilution 1/40, treated with fusion protein. (Original magnification: ×200)