

Product datasheet for **TA365462**

UBE2W Rabbit Polyclonal Antibody

Product data:

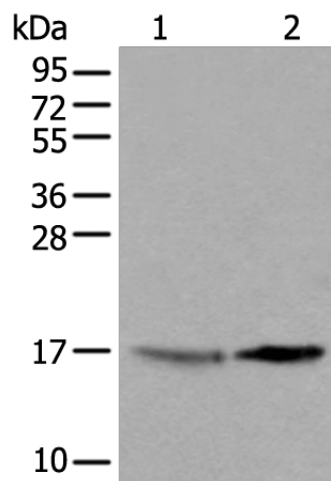
Product Type:	Primary Antibodies
Applications:	IHC, WB
Recommended Dilution:	WB: 500-2000 WB positive control: 231 cell and Human cerebrum tissue lysates IHC: 40-250 Positive control: Human cervical cancer Predicted cell location: Cytoplasm or Nucleus
Reactivity:	Human, Mouse, Rat
Host:	Rabbit
Isotype:	IgG
Clonality:	Polyclonal
Immunogen:	Full length fusion protein
Formulation:	pH7.4 PBS, 0.05% NaN ₃ , 40% Glycerol
Concentration:	lot specific
Purification:	Antigen affinity purification
Conjugation:	Unconjugated
Storage:	Store at -20°C.
Stability:	1 year
Predicted Protein Size:	17 kDa
Gene Name:	ubiquitin conjugating enzyme E2 W (putative)
Database Link:	Entrez Gene 55284 Human Q96B02
Background:	This gene encodes a nuclear-localized ubiquitin-conjugating enzyme (E2) that, along with ubiquitin-activating (E1) and ligating (E3) enzymes, coordinates the addition of a ubiquitin moiety to existing proteins. The encoded protein promotes the ubiquitination of Fanconi anemia complementation group proteins and may be important in the repair of DNA damage. There is a pseudogene for this gene on chromosome 1. Alternative splicing results in multiple transcript variants.



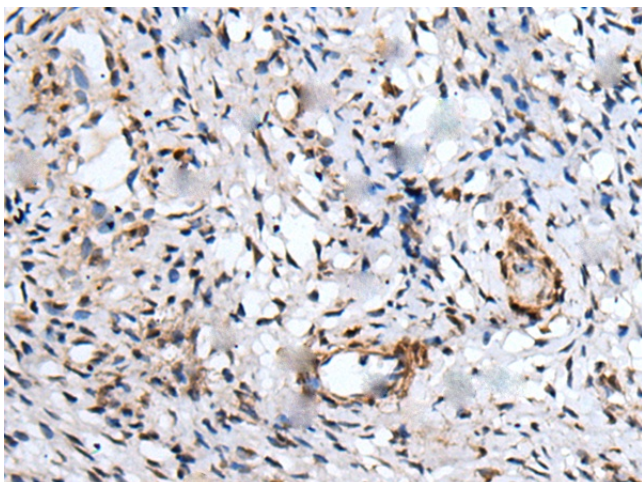
[View online »](#)

Synonyms: FLJ11011; hUBC-16

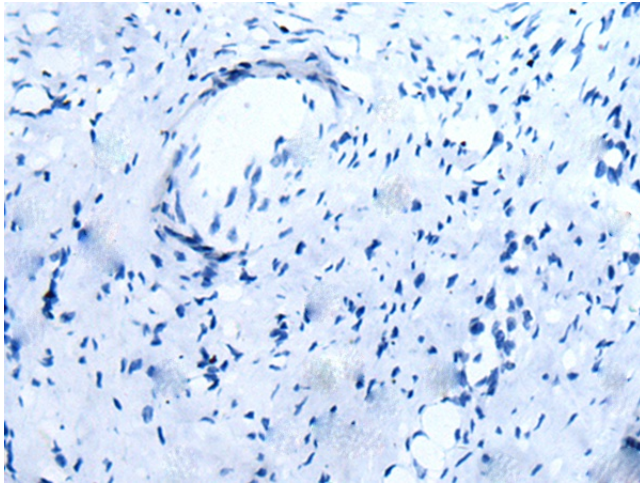
Product images:



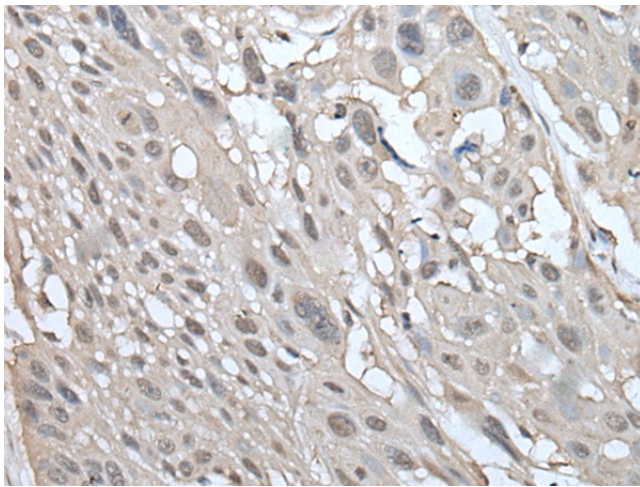
Gel: 12%SDS-PAGE
Lysate: 40 μ g
Lane 1-2: 231 cell and Human cerebrum tissue lysates
Primary antibody: TA365462 (UBE2W Antibody) at dilution 1/550
Secondary antibody: Goat anti rabbit IgG at 1/8000 dilution
Exposure time: 4 minutes



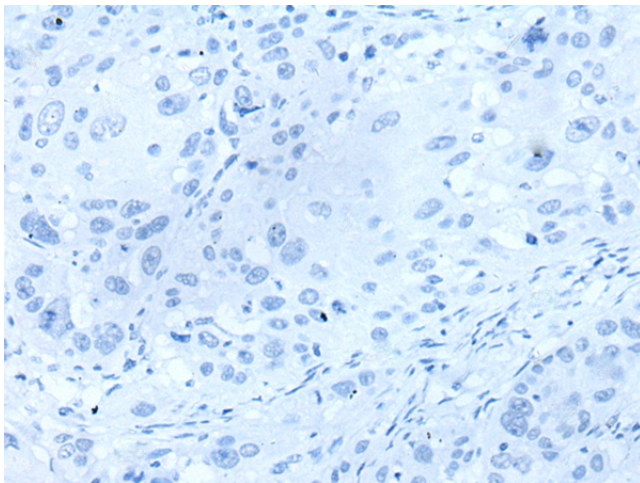
Immunohistochemistry of paraffin-embedded Human cervical cancer tissue using TA365462 (UBE2W Antibody) at dilution 1/55 (Original magnification: \times 200)



Immunohistochemistry of paraffin-embedded Human cervical cancer tissue using TA365462 (UBE2W Antibody) at dilution 1/55, treated with fusion protein. (Original magnification: ×200)



Immunohistochemistry of paraffin-embedded Human esophagus cancer tissue using TA365462 (UBE2W Antibody) at dilution 1/55 (Original magnification: ×200)



Immunohistochemistry of paraffin-embedded Human esophagus cancer tissue using TA365462 (UBE2W Antibody) at dilution 1/55, treated with fusion protein. (Original magnification: ×200)