

Product datasheet for **TA365453S**

U2AF1L5 Rabbit Polyclonal Antibody

Product data:

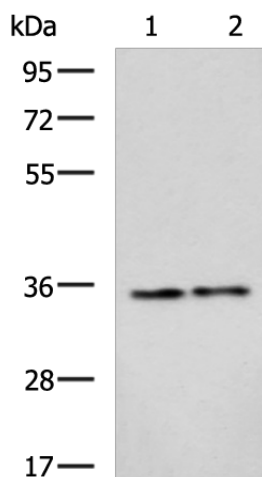
Product Type:	Primary Antibodies
Applications:	IHC, WB
Recommended Dilution:	WB: 500-2000 WB positive control: 231 cell, Rat liver tissue lysates IHC: 200-400 Positive control: Human liver cancer Predicted cell location: Nucleus
Reactivity:	Human, Mouse, Rat
Host:	Rabbit
Isotype:	IgG
Clonality:	Polyclonal
Immunogen:	Fusion protein of human U2AF1
Formulation:	pH7.4 PBS, 0.05% NaN ₃ , 40% Glycerol
Purification:	Antigen affinity purification
Conjugation:	Unconjugated
Storage:	Store at -20°C.
Stability:	1 year
Predicted Protein Size:	28 kDa
Gene Name:	U2 small nuclear RNA auxiliary factor 1 like 5
Database Link:	Entrez Gene 102724594 Human Q01081

Background: This gene belongs to the splicing factor SR family of genes. U2 auxiliary factor, comprising a large and a small subunit, is a non-snRNP protein required for the binding of U2 snRNP to the pre-mRNA branch site. This gene encodes the small subunit which plays a critical role in both constitutive and enhancer-dependent RNA splicing by directly mediating interactions between the large subunit and proteins bound to the enhancers. Alternatively spliced transcript variants encoding different isoforms have been identified.

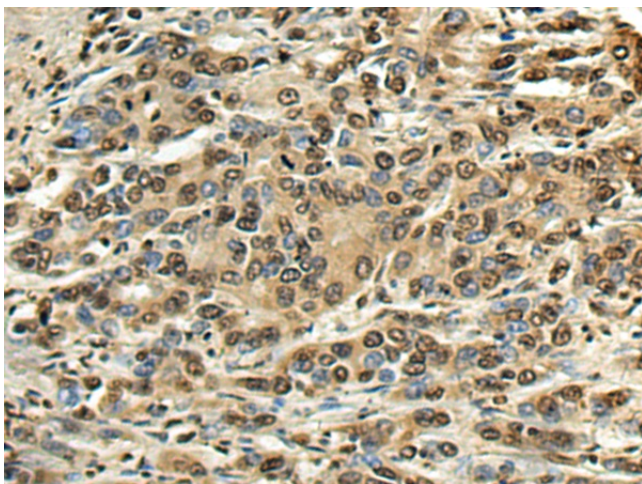


[View online »](#)

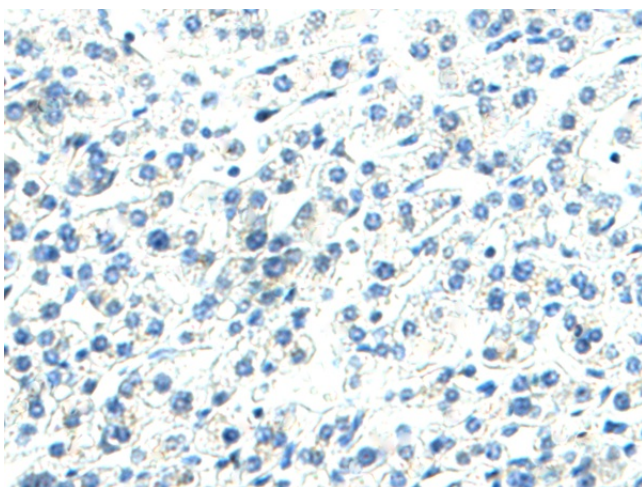
Product images:



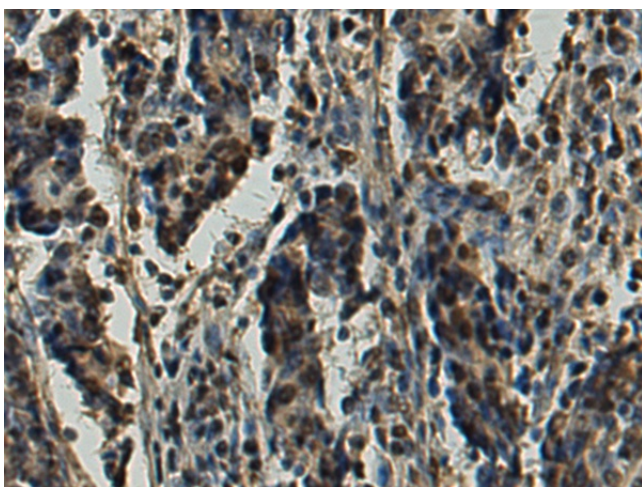
Gel: 8%SDS-PAGE
Lysate: 40 μ g
Lane 1-2: 231 cell
Rat liver tissue lysates
Primary antibody: [TA365453] (U2AF1 Antibody)
at dilution 1/1350
Secondary antibody: Goat anti rabbit IgG at
1/5000 dilution
Exposure time: 30 seconds



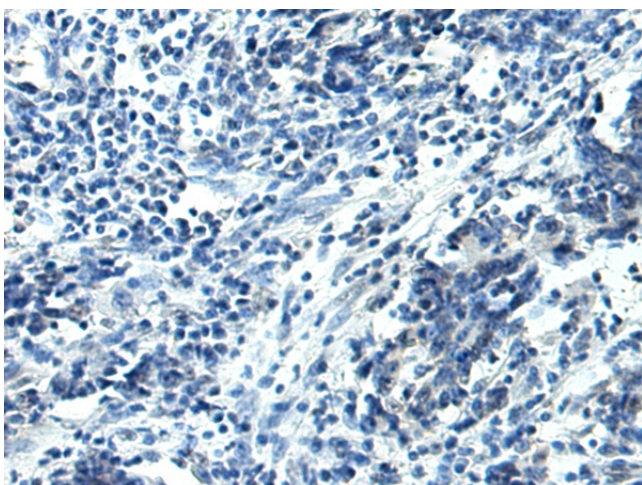
Immunohistochemistry of paraffin-embedded
Human liver cancer tissue using [TA365453]
(U2AF1 Antibody) at dilution 1/200 (Original
magnification: \times 200)



Immunohistochemistry of paraffin-embedded Human liver cancer tissue using [TA365453] (U2AF1 Antibody) at dilution 1/200, treated with fusion protein. (Original magnification: $\times 200$)



Immunohistochemistry of paraffin-embedded Human gastric cancer tissue using [TA365453] (U2AF1 Antibody) at dilution 1/200 (Original magnification: $\times 200$)



Immunohistochemistry of paraffin-embedded Human gastric cancer tissue using [TA365453] (U2AF1 Antibody) at dilution 1/200, treated with fusion protein. (Original magnification: $\times 200$)