

Product datasheet for **TA365450**

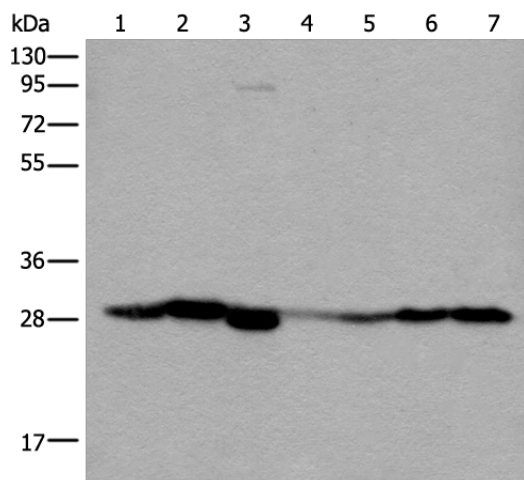
VTI1B Rabbit Polyclonal Antibody

Product data:

Product Type:	Primary Antibodies
Applications:	IHC, WB
Recommended Dilution:	WB: 500-2000 WB positive control: Human kidney tissue, RAW264.7 cell, Mouse kidney tissue, Human lung tissue, Human fetal liver tissue, HeLa and 231 cell lysates IHC: 25-100 Positive control: Human liver cancer Predicted cell location: Cytoplasm
Reactivity:	Human, Mouse, Rat
Host:	Rabbit
Isotype:	IgG
Clonality:	Polyclonal
Immunogen:	Full length fusion protein
Formulation:	pH7.4 PBS, 0.05% NaN ₃ , 40% Glycerol
Concentration:	lot specific
Purification:	Antigen affinity purification
Conjugation:	Unconjugated
Storage:	Store at -20°C.
Stability:	1 year
Predicted Protein Size:	27 kDa
Gene Name:	vesicle transport through interaction with t-SNAREs 1B
Database Link:	Entrez Gene 10490 Human Q9UEU0
Background:	V-SNARE that mediates vesicle transport pathways through interactions with t-SNAREs on the target membrane. These interactions are proposed to mediate aspects of the specificity of vesicle trafficking and to promote fusion of the lipid bilayers. May be concerned with increased secretion of cytokines associated with cellular senescence.
Synonyms:	v-SNARE; VTI1; VTI1-LIKE; Vti1-rp1; VTI1L; VTI1L1; VTI2



[View online »](#)

Product images:

Gel: 8%SDS-PAGE

Lysate: 40 μ g

Lane 1-7: Human kidney tissue

RAW264.7 cell

Mouse kidney tissue

Human lung tissue

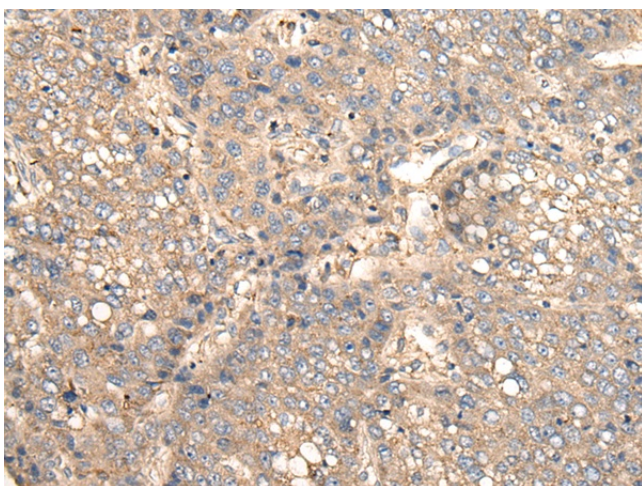
Human fetal liver tissue

Hela and 231 cell lysates

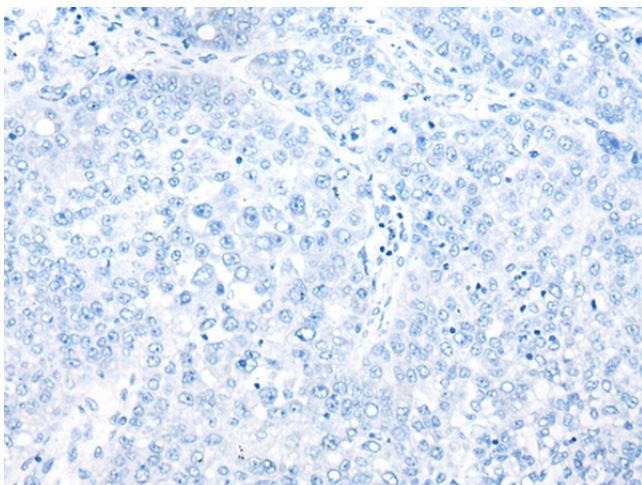
Primary antibody: TA365450 (VTI1B Antibody) at dilution 1/300

Secondary antibody: Goat anti rabbit IgG at 1/8000 dilution

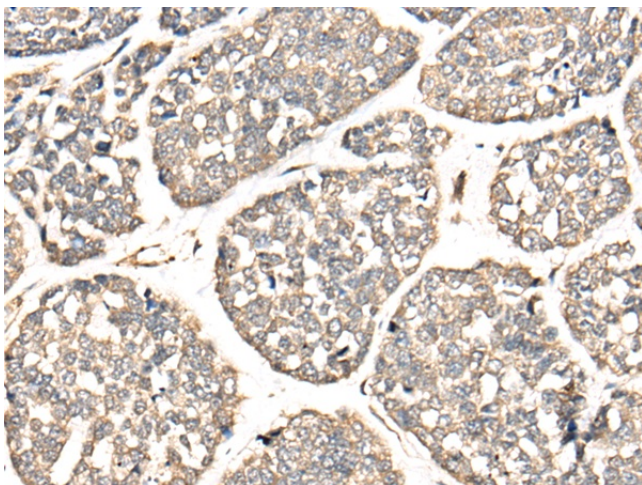
Exposure time: 5 seconds



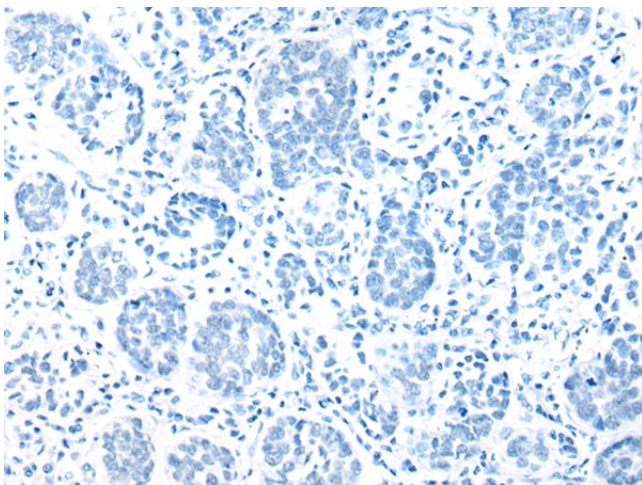
Immunohistochemistry of paraffin-embedded Human liver cancer tissue using TA365450 (VTI1B Antibody) at dilution 1/30 (Original magnification: $\times 200$)



Immunohistochemistry of paraffin-embedded Human liver cancer tissue using TA365450 (VT11B Antibody) at dilution 1/30, treated with fusion protein. (Original magnification: x200)



Immunohistochemistry of paraffin-embedded Human esophagus cancer tissue using TA365450 (VT11B Antibody) at dilution 1/30 (Original magnification: x200)



Immunohistochemistry of paraffin-embedded Human esophagus cancer tissue using TA365450 (VT11B Antibody) at dilution 1/30, treated with fusion protein. (Original magnification: x200)