

## Product datasheet for **TA365449**

### VTI1A Rabbit Polyclonal Antibody

#### Product data:

Product Type:	Primary Antibodies
Applications:	IHC, WB
Recommended Dilution:	WB: 200-1000 WB positive control: 231, Jurkat, Hela and HEPG2 cell lysates IHC: 25-100 Positive control: Human esophagus cancer Predicted cell location: Cytoplasm
Reactivity:	Human, Mouse
Host:	Rabbit
Isotype:	IgG
Clonality:	Polyclonal
Immunogen:	Full length fusion protein
Formulation:	pH7.4 PBS, 0.05% NaN <sub>3</sub> , 40% Glycerol
Concentration:	lot specific
Purification:	Antigen affinity purification
Conjugation:	Unconjugated
Storage:	Store at -20°C.
Stability:	1 year
Predicted Protein Size:	25 kDa
Gene Name:	vesicle transport through interaction with t-SNAREs 1A
Database Link:	<a href="#">Entrez Gene 143187 Human Q96AJ9</a>



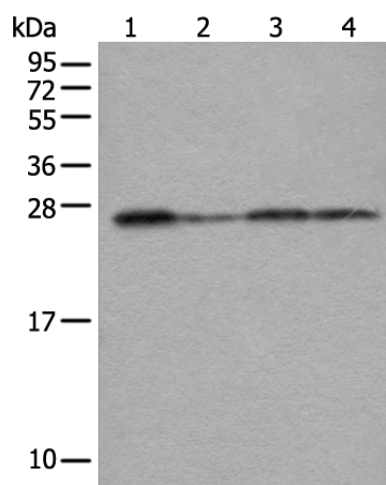
[View online »](#)

**Background:**

The protein encoded by this gene is a member of the family of soluble N-ethylmaleimide-sensitive fusion protein-attachment protein receptors (SNAREs) that function in intracellular trafficking. This family member is involved in vesicular transport between endosomes and the trans-Golgi network. It is a vesicle-associated SNARE (v-SNARE) that interacts with target membrane SNAREs (t-SNAREs). Polymorphisms in this gene have been associated with binocular function, and also with susceptibility to colorectal and lung cancers. A recurrent rearrangement has been found between this gene and the transcription factor 7-like 2 (TCF7L2) gene in colorectal cancers. Alternative splicing results in multiple transcript variants.

**Synonyms:**

MVti1; Vti1-rp2

**Product images:**

Gel: 12%SDS-PAGE

Lysate: 40  $\mu$ g

Lane 1-4: 231

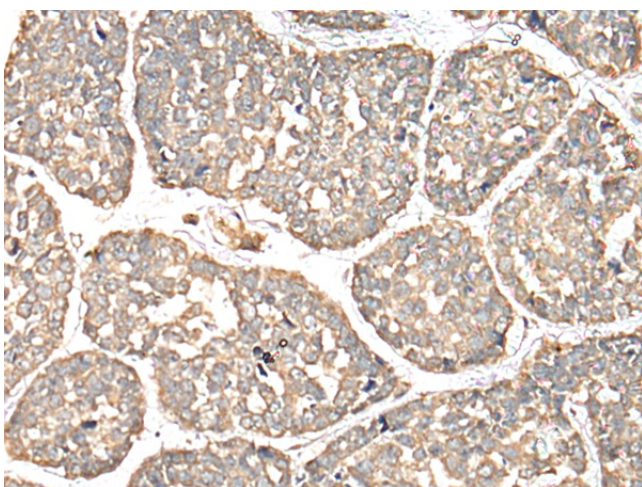
Jurkat

Hela and HEPG2 cell lysates

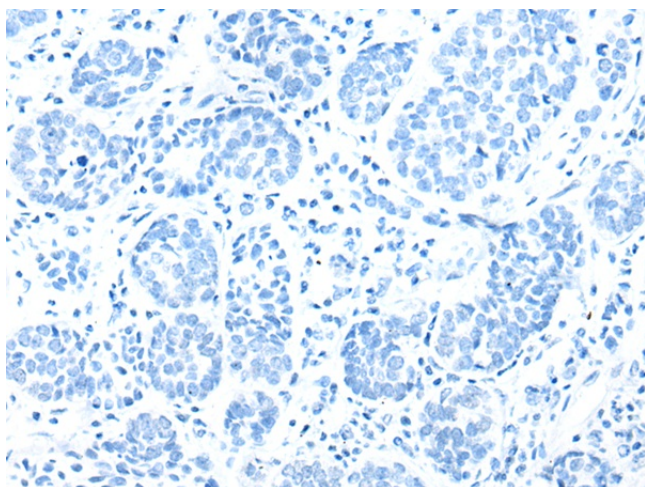
Primary antibody: TA365449 (VTI1A Antibody) at dilution 1/300

Secondary antibody: Goat anti rabbit IgG at 1/8000 dilution

Exposure time: 3 seconds



Immunohistochemistry of paraffin-embedded Human esophagus cancer tissue using TA365449 (VTI1A Antibody) at dilution 1/30 (Original magnification:  $\times$ 200)



Immunohistochemistry of paraffin-embedded Human esophagus cancer tissue using TA365449 (VT11A Antibody) at dilution 1/30, treated with fusion protein. (Original magnification: ×200)