

## Product datasheet for **TA365440S**

### VENTX Rabbit Polyclonal Antibody

#### Product data:

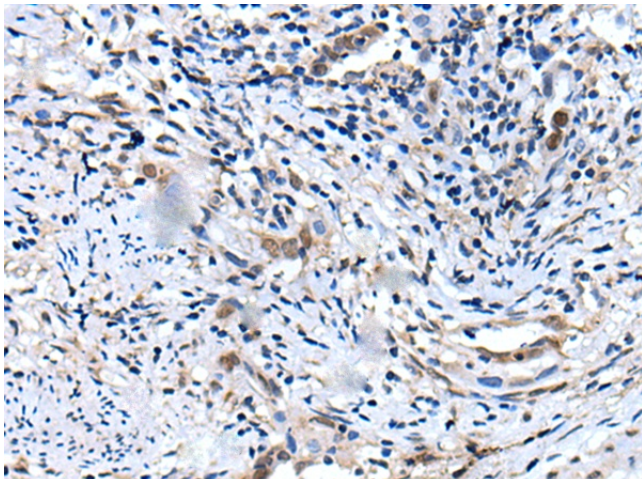
Product Type:	Primary Antibodies
Applications:	IHC
Recommended Dilution:	IHC: 20-100 Positive control: Human cervical cancer Predicted cell location: Cytoplasm and Nucleus
Reactivity:	Human
Host:	Rabbit
Isotype:	IgG
Clonality:	Polyclonal
Immunogen:	Full length fusion protein
Formulation:	pH7.4 PBS, 0.05% NaN <sub>3</sub> , 40% Glycerol
Purification:	Antigen affinity purification
Conjugation:	Unconjugated
Storage:	Store at -20°C.
Stability:	1 year
Gene Name:	VENT homeobox
Database Link:	<a href="#">Entrez Gene 27287 Human O95231</a>

**Background:** This gene encodes a member of the Vent family of homeodomain proteins. The encoded protein may function as a transcriptional repressor and be involved in mesodermal patterning and hemopoietic stem cell maintenance. Multiple pseudogenes exist for this gene. A transcribed pseudogene located on chromosome X may lead to antigen production in certain melanomas.

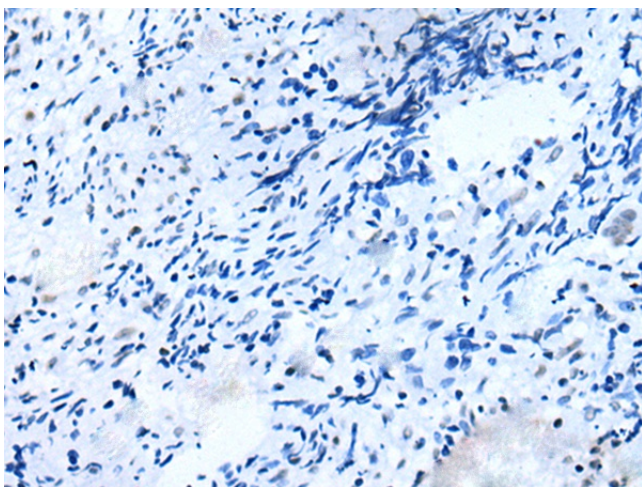
**Synonyms:** HPX42B; MGC119910; MGC119911; NA88A; VENTX2



[View online »](#)

**Product images:**

Immunohistochemistry of paraffin-embedded Human cervical cancer tissue using [TA365440] (VENTX Antibody) at dilution 1/30 (Original magnification:  $\times 200$ )



Immunohistochemistry of paraffin-embedded Human cervical cancer tissue using [TA365440] (VENTX Antibody) at dilution 1/30, treated with fusion protein. (Original magnification:  $\times 200$ )