

Product datasheet for **TA365438**

VCP Rabbit Polyclonal Antibody

Product data:

Product Type:	Primary Antibodies
Applications:	IHC, WB
Recommended Dilution:	WB: 500-2000 WB positive control: Jurkat□HEPG2□A431□A549□Hela and 231 cell lysates IHC: 25-100 Positive control: Human prostate cancer Predicted cell location: Nucleus and Cytoplasm
Reactivity:	Human, Mouse, Rat
Host:	Rabbit
Isotype:	IgG
Clonality:	Polyclonal
Immunogen:	Fusion protein of human VCP
Formulation:	pH7.4 PBS, 0.05% NaN ₃ , 40% Glycerol
Concentration:	lot specific
Purification:	Antigen affinity purification
Conjugation:	Unconjugated
Storage:	Store at -20°C.
Stability:	1 year
Predicted Protein Size:	89 kDa
Gene Name:	valosin containing protein
Database Link:	Entrez Gene 7415 Human P55072

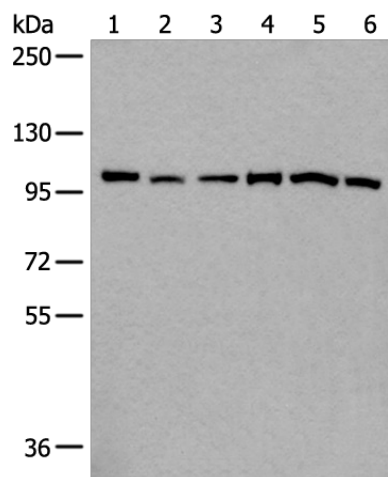
Background: The protein encoded by this gene is a member of a family that includes putative ATP-binding proteins involved in vesicle transport and fusion, 26S proteasome function, and assembly of peroxisomes. This protein, as a structural protein, is associated with clathrin, and heat-shock protein Hsc70, to form a complex. It has been implicated in a number of cellular events that are regulated during mitosis, including homotypic membrane fusion, spindle pole body function, and ubiquitin-dependent protein degradation.



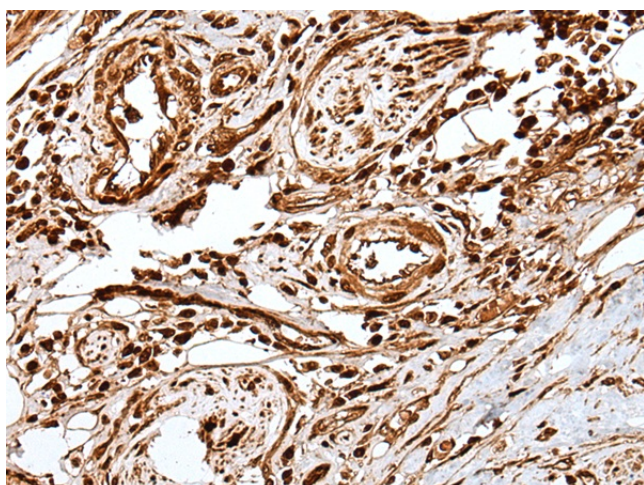
[View online »](#)

Synonyms: IBMPFD; MGC8560; MGC131997; MGC148092; p97; TERA

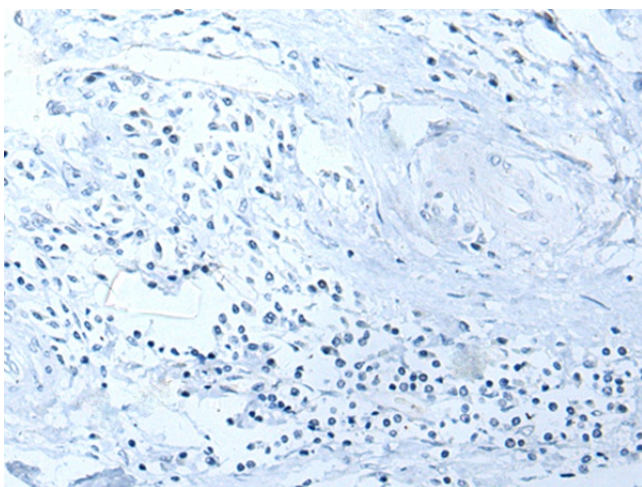
Product images:



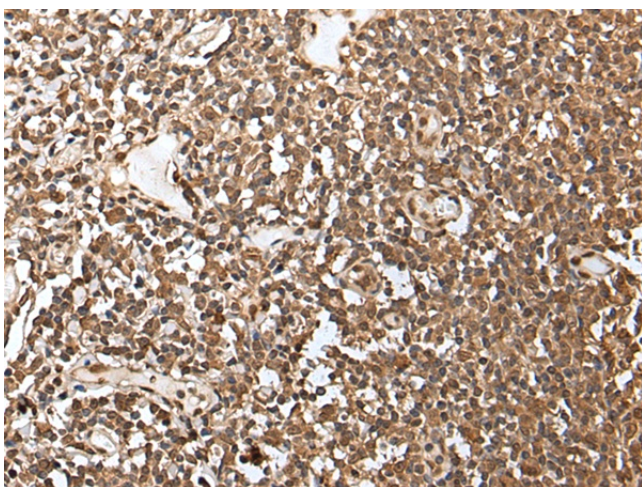
Gel: 6%SDS-PAGE
 Lysate: 40 µg
 Lane 1-6: Jurkat
 HEPG2
 A431
 A549
 HeLa and 231 cell lysates
 Primary antibody: TA365438 (VCP Antibody) at dilution 1/300
 Secondary antibody: Goat anti rabbit IgG at 1/8000 dilution
 Exposure time: 3 seconds



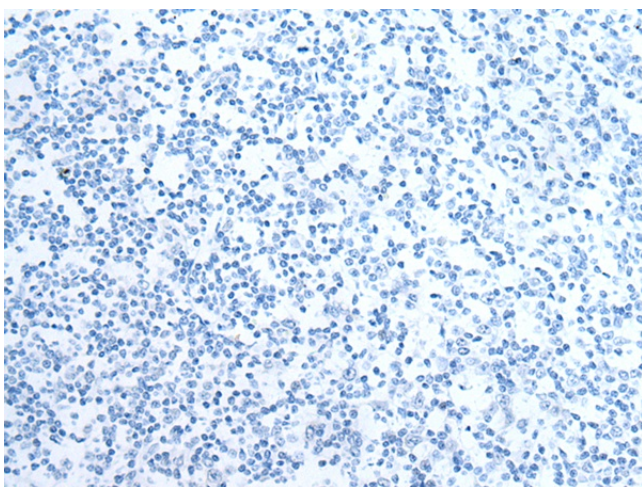
Immunohistochemistry of paraffin-embedded Human prostate cancer tissue using TA365438 (VCP Antibody) at dilution 1/30 (Original magnification: ×200)



Immunohistochemistry of paraffin-embedded Human prostate cancer tissue using TA365438 (VCP Antibody) at dilution 1/30, treated with fusion protein. (Original magnification: ×200)



Immunohistochemistry of paraffin-embedded Human tonsil tissue using TA365438 (VCP Antibody) at dilution 1/30 (Original magnification: ×200)



Immunohistochemistry of paraffin-embedded Human tonsil tissue using TA365438 (VCP Antibody) at dilution 1/30, treated with fusion protein. (Original magnification: ×200)