

## Product datasheet for **TA365433S**

### WDFY2 Rabbit Polyclonal Antibody

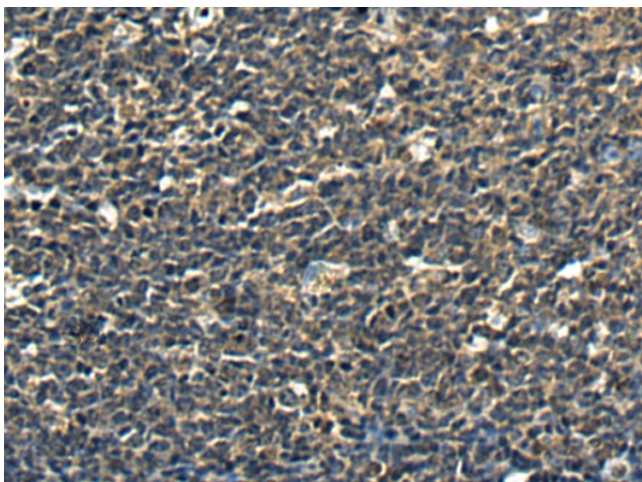
#### Product data:

Product Type:	Primary Antibodies
Applications:	IHC
Recommended Dilution:	IHC: 150-300 Positive control: Human tonsil Predicted cell location: Cytoplasm
Reactivity:	Human, Mouse
Host:	Rabbit
Isotype:	IgG
Clonality:	Polyclonal
Immunogen:	Fusion protein of human WDFY2
Formulation:	pH7.4 PBS, 0.05% NaN <sub>3</sub> , 40% Glycerol
Purification:	Antigen affinity purification
Conjugation:	Unconjugated
Storage:	Store at -20°C.
Stability:	1 year
Gene Name:	WD repeat and FYVE domain containing 2
Database Link:	<a href="#">Entrez Gene 115825 Human Q96P53</a>
Background:	This gene encodes a protein that contains two WD domains and an FYVE zinc finger region. The function of this gene is unknown. An alternatively spliced transcript variant of this gene may exist.
Synonyms:	PROF; RP11-147H23.1; WDF2; ZFYVE22

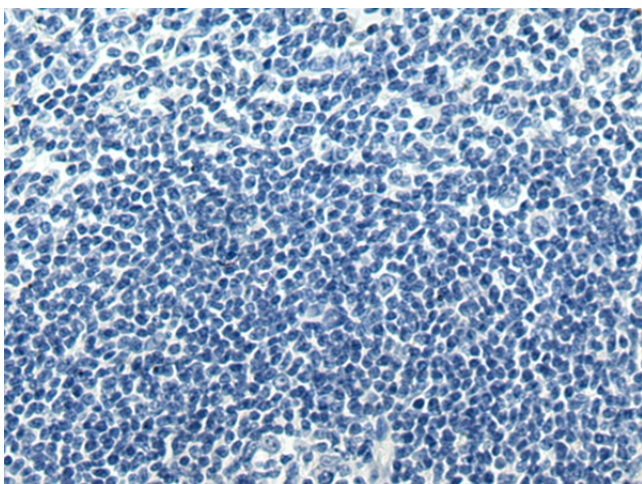


[View online »](#)

## Product images:



Immunohistochemistry of paraffin-embedded Human tonsil tissue using [TA365433] (WDFY2 Antibody) at dilution 1/180 (Original magnification:  $\times 200$ )



Immunohistochemistry of paraffin-embedded Human tonsil tissue using [TA365433] (WDFY2 Antibody) at dilution 1/180, treated with fusion protein. (Original magnification:  $\times 200$ )