

Product datasheet for **TA365432**

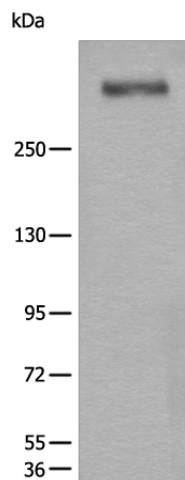
WDFY4 Rabbit Polyclonal Antibody

Product data:

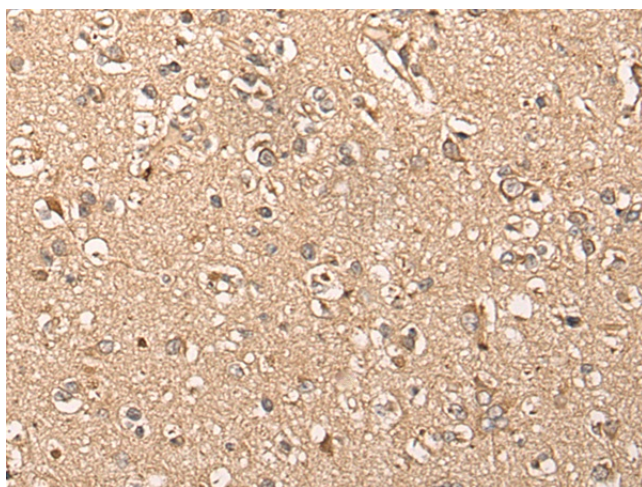
Product Type:	Primary Antibodies
Applications:	IHC, WB
Recommended Dilution:	WB: 200-1000 WB positive control: Human lung tissue lysate IHC: 25-100 Positive control: Human brain Predicted cell location: Cytoplasm
Reactivity:	Human
Host:	Rabbit
Isotype:	IgG
Clonality:	Polyclonal
Immunogen:	Fusion protein of human WDFY4
Formulation:	pH7.4 PBS, 0.05% NaN ₃ , 40% Glycerol
Concentration:	lot specific
Purification:	Antigen affinity purification
Conjugation:	Unconjugated
Storage:	Store at -20°C.
Stability:	1 year
Predicted Protein Size:	354 kDa
Gene Name:	WDFY family member 4
Database Link:	Entrez Gene 57705 Human Q6ZS81
Background:	WDFY4 (WDFY family member 4) is a protein-coding gene. Diseases associated with WDFY4 include chediak-higashi syndrome, and systemic lupus erythematosus.
Synonyms:	C10orf64; Em:AC060234.3; FLJ17416; FLJ36288; FLJ45748; KIAA1607; MGC40604; MGC45899



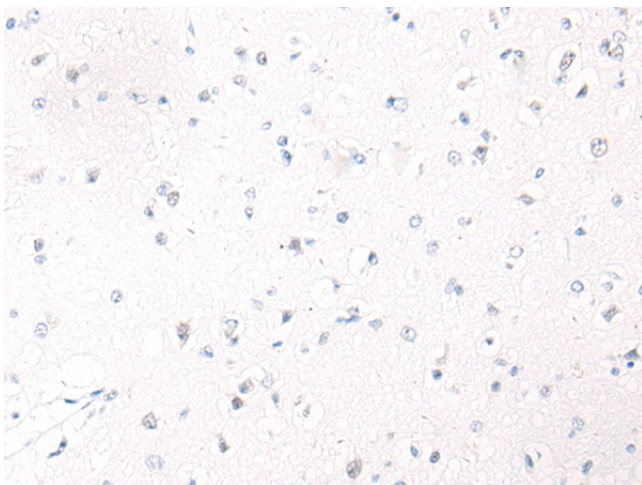
[View online »](#)

Product images:

Gel: 6%SDS-PAGE
Lysate: 40 μ g
Lane: Human lung tissue lysate
Primary antibody: TA365432 (WDFY4 Antibody) at dilution 1/300
Secondary antibody: Goat anti rabbit IgG at 1/8000 dilution
Exposure time: 4 minutes



Immunohistochemistry of paraffin-embedded Human brain tissue using TA365432 (WDFY4 Antibody) at dilution 1/30 (Original magnification: \times 200)



Immunohistochemistry of paraffin-embedded Human brain tissue using TA365432 (WDFY4 Antibody) at dilution 1/30, treated with fusion protein. (Original magnification: ×200)