

Product datasheet for **TA365428**

WAVE 1 (WASF1) Rabbit Polyclonal Antibody

Product data:

Product Type:	Primary Antibodies
Applications:	IHC, WB
Recommended Dilution:	WB: 500-2000 WB positive control: K562, NIH/3T3, U251, HUVEC cell lysates IHC: 50-200 Positive control: Human liver cancer Predicted cell location: Cytoplasm
Reactivity:	Human, Mouse, Rat
Host:	Rabbit
Isotype:	IgG
Clonality:	Polyclonal
Immunogen:	Fusion protein of human WASF1
Formulation:	pH7.4 PBS, 0.05% NaN ₃ , 40% Glycerol
Concentration:	lot specific
Purification:	Antigen affinity purification
Conjugation:	Unconjugated
Storage:	Store at -20°C.
Stability:	1 year
Predicted Protein Size:	62 kDa
Gene Name:	WAS protein family member 1
Database Link:	Entrez Gene 8936 Human Q92558



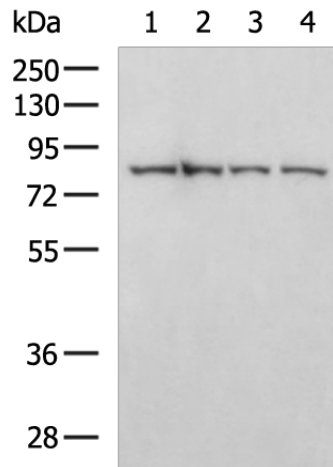
[View online »](#)

Background:

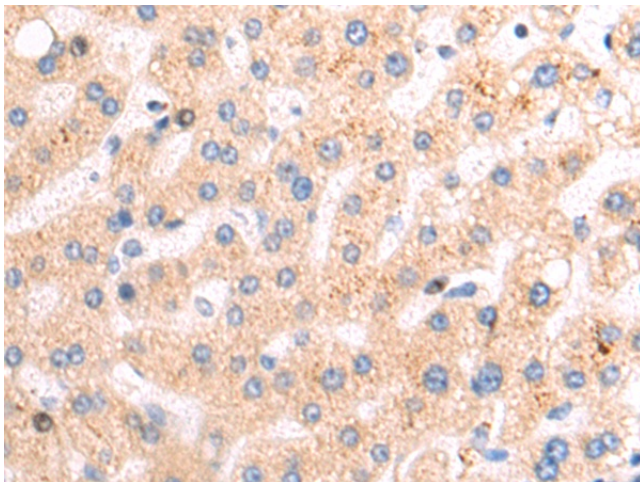
The protein encoded by this gene, a member of the Wiskott-Aldrich syndrome protein (WASP)-family, plays a critical role downstream of Rac, a Rho-family small GTPase, in regulating the actin cytoskeleton required for membrane ruffling. It has been shown to associate with an actin nucleation core Arp2/3 complex while enhancing actin polymerization in vitro. Wiskott-Aldrich syndrome is a disease of the immune system, likely due to defects in regulation of actin cytoskeleton. Multiple alternatively spliced transcript variants encoding the same protein have been found for this gene.

Synonyms:

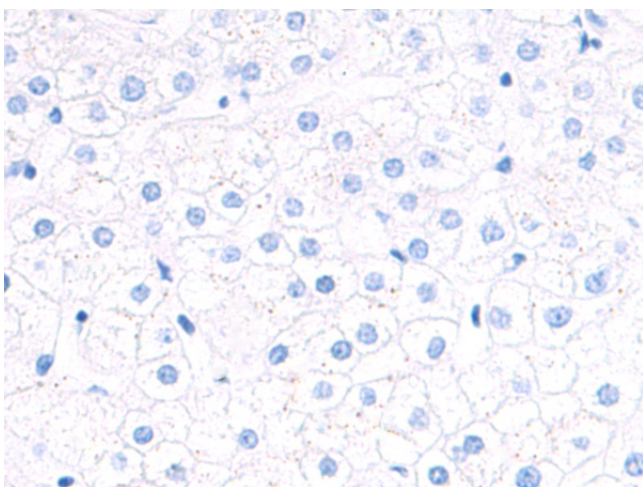
FLJ31482; KIAA0269; OTTHUMP00000016990; SCAR1; WAVE; WAVE1

Product images:


Gel: 8%SDS-PAGE
 Lysate: 40 µg
 Lane 1-4: K562
 NIH/3T3
 U251
 HUVEC cell lysates
 Primary antibody: TA365428 (WASF1 Antibody) at dilution 1/800
 Secondary antibody: Goat anti rabbit IgG at 1/5000 dilution
 Exposure time: 10 seconds



Immunohistochemistry of paraffin-embedded Human liver cancer tissue using TA365428 (WASF1 Antibody) at dilution 1/80 (Original magnification: ×200)



Immunohistochemistry of paraffin-embedded Human liver cancer tissue using TA365428 (WASF1 Antibody) at dilution 1/80, treated with fusion protein. (Original magnification: ×200)