

Product datasheet for **TA365414**

ZZZ3 Rabbit Polyclonal Antibody

Product data:

Product Type:	Primary Antibodies
Applications:	IHC
Recommended Dilution:	IHC: 25-100 Positive control: Human esophagus cancer Predicted cell location: Nucleus
Reactivity:	Human, Mouse
Host:	Rabbit
Isotype:	IgG
Clonality:	Polyclonal
Immunogen:	Fusion protein of human ZZZ3
Formulation:	pH7.4 PBS, 0.05% NaN ₃ , 40% Glycerol
Concentration:	lot specific
Purification:	Antigen affinity purification
Conjugation:	Unconjugated
Storage:	Store at -20°C.
Stability:	1 year
Gene Name:	zinc finger ZZ-type containing 3
Database Link:	Entrez Gene 26009 Human Q8IYH5



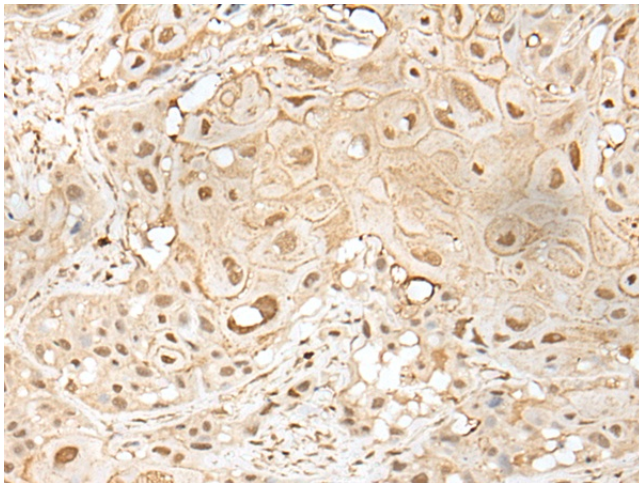
[View online »](#)

Background:

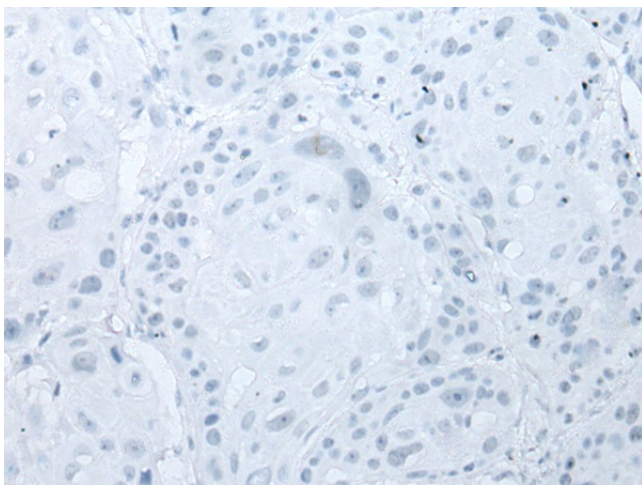
ZZZ3 (ZZ-type zinc finger-containing protein 3) is a 903 amino acid protein that contains one HTH myb-type DNA-binding domain and one ZZ-type zinc finger. Phosphorylated upon DNA damage by ATM or ATR, ZZZ3 is a subunit of the ATAC complex, which is composed of GCN5, CRP2BP, ADA3, TADA2L, DR1, CCDC101, YEATS2, WDR5 and MBIP. The ATAC complex has histone acetyltransferase activity on histones H3 and H4. ZZZ3 is expressed as four isoforms produced by alternative splicing and is encoded by a gene mapping to human chromosome 1. Chromosome 1 is the largest human chromosome spanning about 260 million base pairs and making up 8% of the human genome. There are about 3,000 genes on chromosome 1, and considering the great number of genes there are also a large number of diseases associated with chromosome 1. Notably, the rare aging disease Hutchinson-Gilford progeria is associated with the LMNA gene which encodes lamin A. When defective, the LMNA gene product can build up in the nucleus and cause characteristic nuclear blebs. The mechanism of rapidly enhanced aging is unclear and is a topic of continuing exploration. Stickler syndrome, Parkinsons, Gaucher disease and Usher syndrome are also associated with chromosome 1.

Synonyms:

DKFZp313N0119; DKFZP564I052; FLJ10362

Product images:

Immunohistochemistry of paraffin-embedded Human esophagus cancer tissue using TA365414 (ZZZ3 Antibody) at dilution 1/30 (Original magnification: $\times 200$)



Immunohistochemistry of paraffin-embedded Human esophagus cancer tissue using TA365414 (ZZZ3 Antibody) at dilution 1/30, treated with fusion protein. (Original magnification: ×200)