

## Product datasheet for **TA365412S**

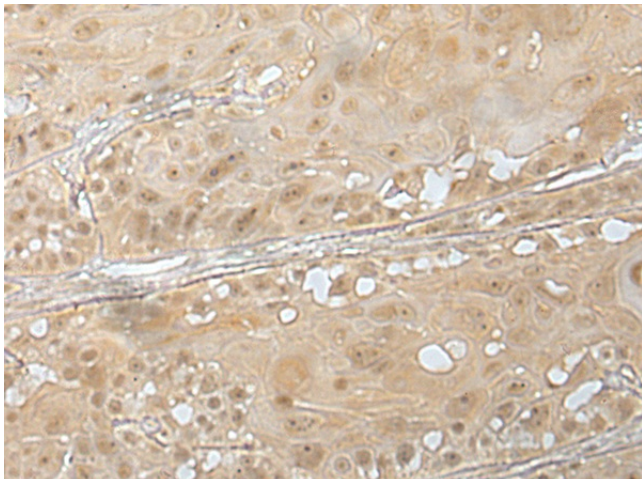
### ZUP1 Rabbit Polyclonal Antibody

#### Product data:

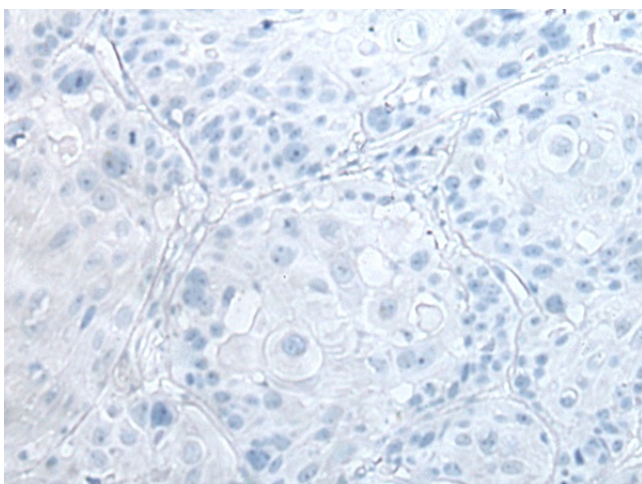
Product Type:	Primary Antibodies
Applications:	IHC
Recommended Dilution:	IHC: 25-100 Positive control: Human esophagus cancer Predicted cell location: Nucleus and Cytoplasm
Reactivity:	Human, Mouse, Rat
Host:	Rabbit
Isotype:	IgG
Clonality:	Polyclonal
Immunogen:	Fusion protein of human ZUP1
Formulation:	pH7.4 PBS, 0.05% NaN <sub>3</sub> , 40% Glycerol
Purification:	Antigen affinity purification
Conjugation:	Unconjugated
Storage:	Store at -20°C.
Stability:	1 year
Gene Name:	zinc finger with UFM1 specific peptidase domain
Database Link:	<a href="#">Entrez Gene 221302 Human Q96AP4</a>
Background:	This gene encodes a protein containing zinc finger motifs and a cysteine peptidase domain. The encoded protein functions as a K63-specific de-ubiquitinating enzyme that specifically cleaves long K63-linked polyubiquitin chains in the middle of a chain (i.e. "endo cleavage") rather than by removing the terminal ubiquitin from a chain. This enzyme is thought to be involved in the regulation of DNA repair by cleaving K63-linked ubiquitin chains at repair foci. This protein is related to proteases for the ubiquitin-like modifiers Ufm1 (ubiquitin fold modifier 1) and Atg8/Gabarapl2, but does not have any activity on these modifiers. [provided by RefSeq, Mar 2018]
Synonyms:	C6orf113; dj412i7.3



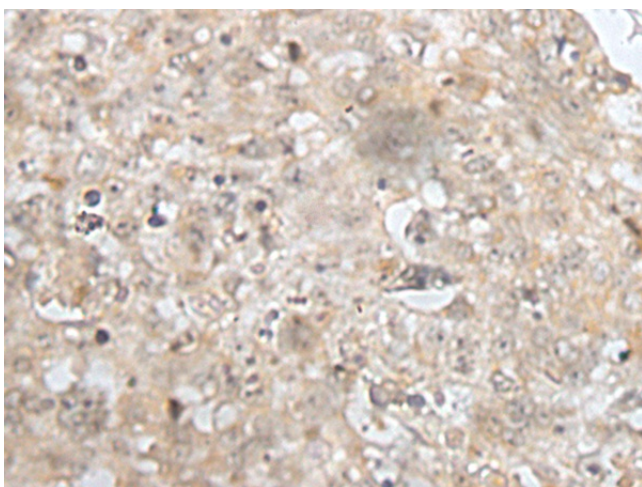
[View online »](#)

**Product images:**

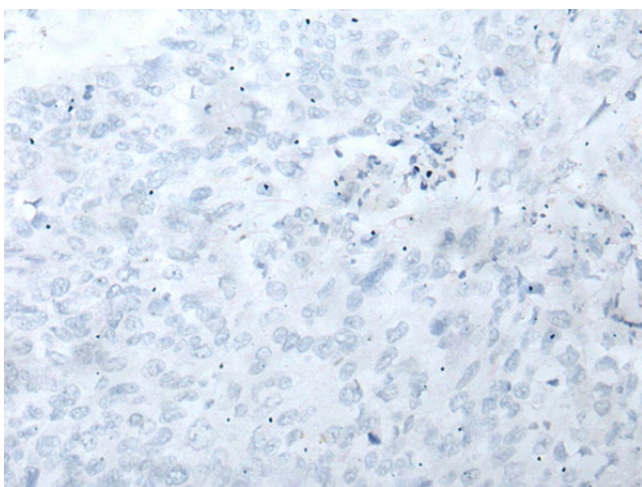
Immunohistochemistry of paraffin-embedded Human esophagus cancer tissue using [TA365412] (ZUP1 Antibody) at dilution 1/30 (Original magnification:  $\times 200$ )



Immunohistochemistry of paraffin-embedded Human esophagus cancer tissue using [TA365412] (ZUP1 Antibody) at dilution 1/30, treated with fusion protein. (Original magnification:  $\times 200$ )



Immunohistochemistry of paraffin-embedded Human lung cancer tissue using [TA365412] (ZUP1 Antibody) at dilution 1/30 (Original magnification:  $\times 200$ )



Immunohistochemistry of paraffin-embedded Human lung cancer tissue using [TA365412] (ZUP1 Antibody) at dilution 1/30, treated with fusion protein. (Original magnification:  $\times 200$ )