

## Product datasheet for **TA365410**

### ZPBP1 (ZPBP) Rabbit Polyclonal Antibody

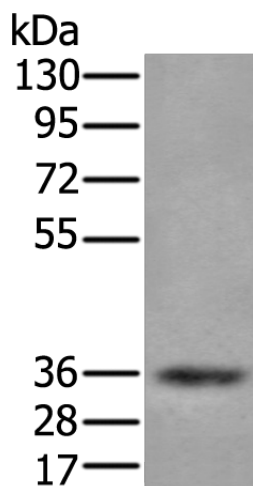
#### Product data:

Product Type:	Primary Antibodies
Applications:	IHC, WB
Recommended Dilution:	WB: 200-1000 WB positive control: Human testis tissue lysate IHC: 25-100 Positive control: Human brain Predicted cell location: Secreted
Reactivity:	Human, Mouse
Host:	Rabbit
Isotype:	IgG
Clonality:	Polyclonal
Immunogen:	Fusion protein of human ZPBP
Formulation:	pH7.4 PBS, 0.05% NaN <sub>3</sub> , 40% Glycerol
Concentration:	lot specific
Purification:	Antigen affinity purification
Conjugation:	Unconjugated
Storage:	Store at -20°C.
Stability:	1 year
Predicted Protein Size:	40 kDa
Gene Name:	zona pellucida binding protein
Database Link:	<a href="#">Entrez Gene 11055 Human Q9BS86</a>
Background:	ZPBP is one of several proteins that are thought to participate in secondary binding between acrosome-reacted sperm and the egg-specific extracellular matrix, the zona pellucida (McLeskey et al., 1998 [PubMed 9378618]). May be implicated in gamete interaction during fertilization.
Synonyms:	FLJ93221; SP38; ZPBP1

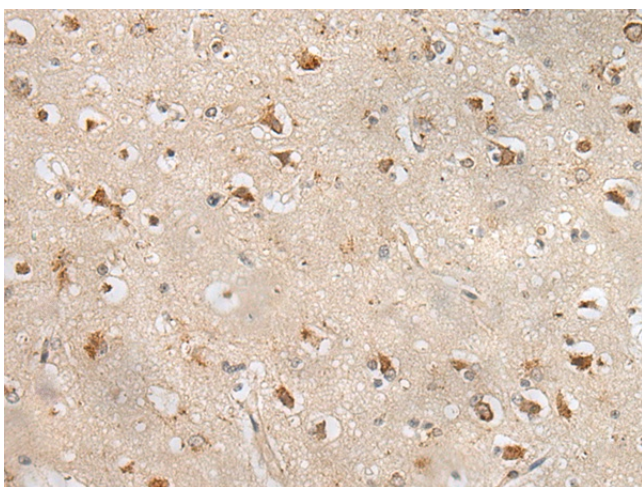


[View online »](#)

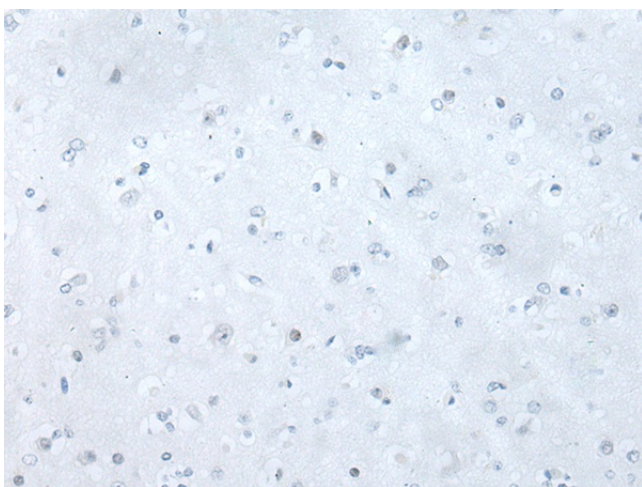
## Product images:



Gel: 8%SDS-PAGE  
Lysate: 40 µg  
Lane: Human testis tissue lysate  
Primary antibody: TA365410 (ZBPB Antibody) at dilution 1/200  
Secondary antibody: Goat anti rabbit IgG at 1/8000 dilution  
Exposure time: 30 seconds



Immunohistochemistry of paraffin-embedded Human brain tissue using TA365410 (ZBPB Antibody) at dilution 1/30 (Original magnification: ×200)



Immunohistochemistry of paraffin-embedded Human brain tissue using TA365410 (ZBPB Antibody) at dilution 1/30, treated with fusion protein. (Original magnification: x200)