

## Product datasheet for **TA365406**

### **ZNF690 (ZSCAN29) Rabbit Polyclonal Antibody**

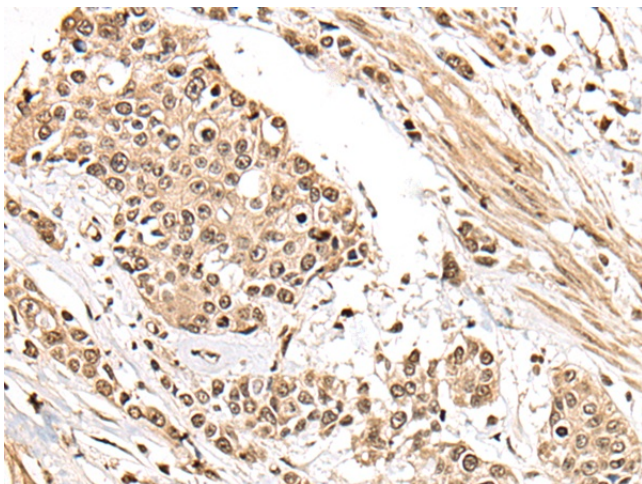
#### **Product data:**

|                       |  |
|-----------------------|--|
| Product Type:         | Primary Antibodies   |
| Applications:         | IHC  |
| Recommended Dilution: | IHC: 25-100<br>Positive control: Human prostate cancer<br>Predicted cell location: Nucleus |
| Reactivity:           | Human  |
| Host:                 | Rabbit   |
| Isotype:              | IgG  |
| Clonality:            | Polyclonal   |
| Immunogen:            | Fusion protein of human ZSCAN29  |
| Formulation:          | pH7.4 PBS, 0.05% NaN <sub>3</sub> , 40% Glycerol   |
| Concentration:        | lot specific   |
| Purification:         | Antigen affinity purification  |
| Conjugation:          | Unconjugated   |
| Storage:              | Store at -20°C.  |
| Stability:            | 1 year   |
| Gene Name:            | zinc finger and SCAN domain containing 29  |
| Database Link:        | <a href="#">Entrez Gene 146050 Human</a><br><a href="#">Q8IYW8</a>                         |
| Background:           | May be involved in transcriptional regulation.   |
| Synonyms:             | FLJ35867; MGC129894; MGC129895; Zfp690; ZNF690   |

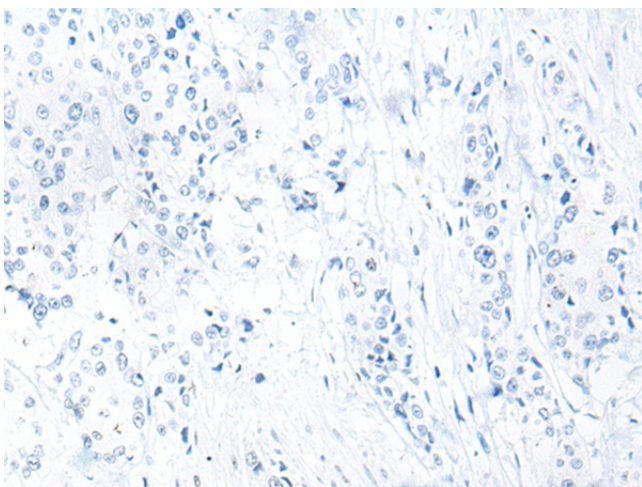


[View online »](#)

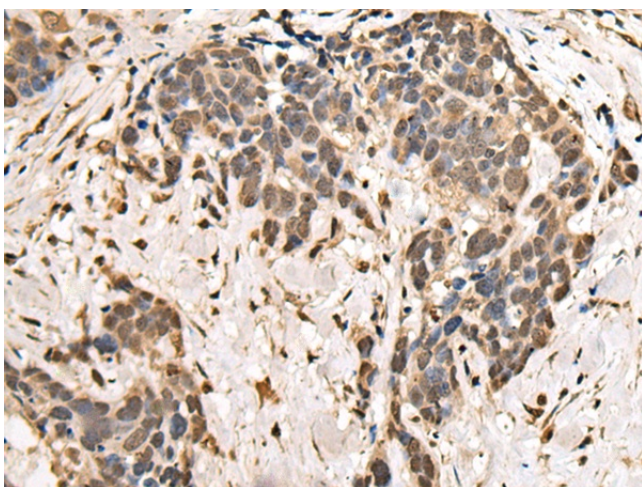
## Product images:



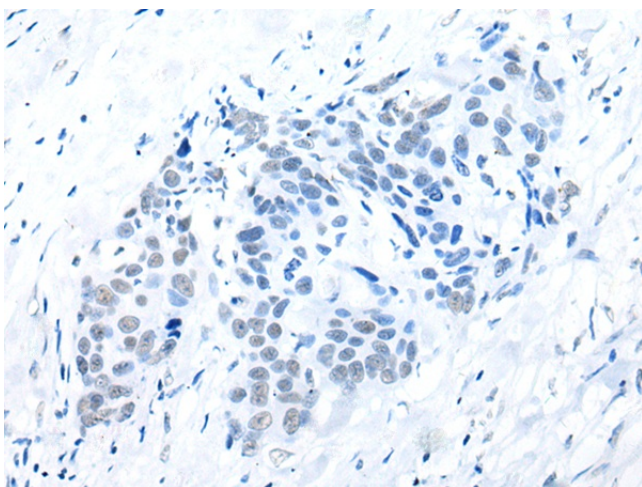
Immunohistochemistry of paraffin-embedded Human prostate cancer tissue using TA365406 (ZSCAN29 Antibody) at dilution 1/30 (Original magnification:  $\times 200$ )



Immunohistochemistry of paraffin-embedded Human prostate cancer tissue using TA365406 (ZSCAN29 Antibody) at dilution 1/30, treated with fusion protein. (Original magnification:  $\times 200$ )



Immunohistochemistry of paraffin-embedded Human thyroid cancer tissue using TA365406 (ZSCAN29 Antibody) at dilution 1/30 (Original magnification: ×200)



Immunohistochemistry of paraffin-embedded Human thyroid cancer tissue using TA365406 (ZSCAN29 Antibody) at dilution 1/30, treated with fusion protein. (Original magnification: ×200)