

## Product datasheet for **TA365397**

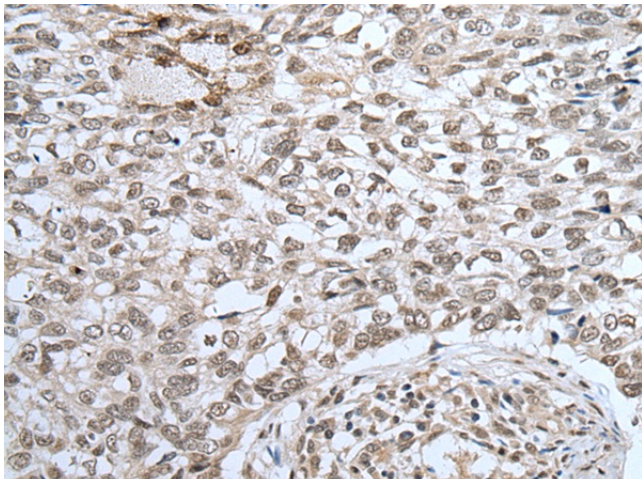
### ZNF37A Rabbit Polyclonal Antibody

#### Product data:

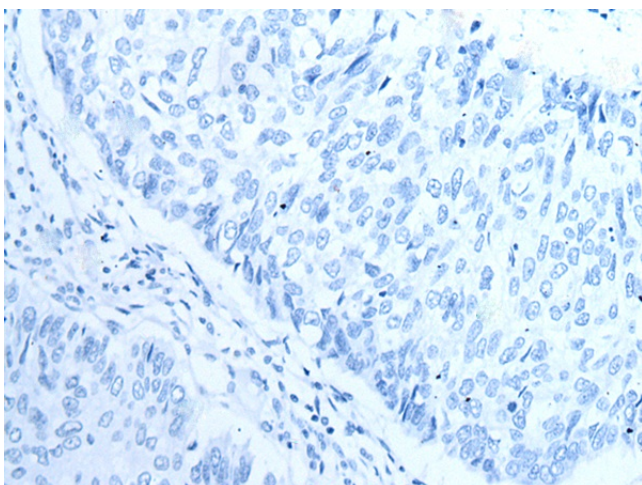
Product Type:	Primary Antibodies
Applications:	IHC
Recommended Dilution:	IHC: 25-100 Positive control: Human lung cancer Predicted cell location: Nucleus or Cytoplasm
Reactivity:	Human
Host:	Rabbit
Isotype:	IgG
Clonality:	Polyclonal
Immunogen:	Fusion protein of human ZNF37A
Formulation:	pH7.4 PBS, 0.05% NaN <sub>3</sub> , 40% Glycerol
Concentration:	lot specific
Purification:	Antigen affinity purification
Conjugation:	Unconjugated
Storage:	Store at -20°C.
Stability:	1 year
Gene Name:	zinc finger protein 37A
Database Link:	<a href="#">Entrez Gene 7587 Human P17032</a>
Background:	ZNF37A, also called KOX21, is a member of the Krüppel C2H2-type zinc-finger family of transcriptional regulators. Located in the nucleus, ZNF37A is a 561 amino acid protein containing one KRAB domain and 12 C2H2-type zinc fingers. The gene encoding ZNF37A is found in a KOX zinc-finger cluster located on chromosome 10.
Synonyms:	FLJ3472; KOX21; ZNF37



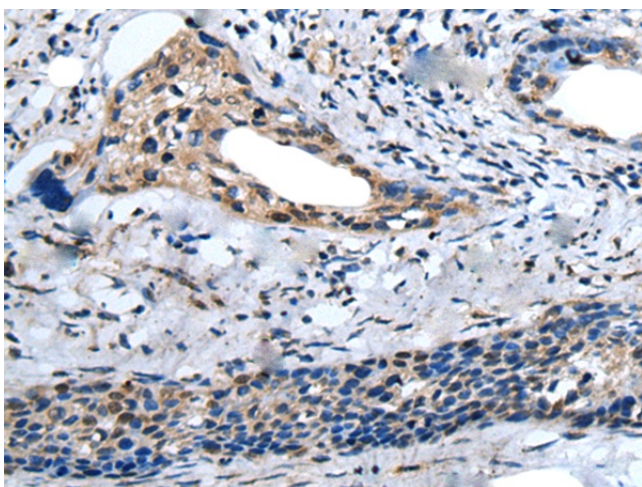
[View online »](#)

**Product images:**

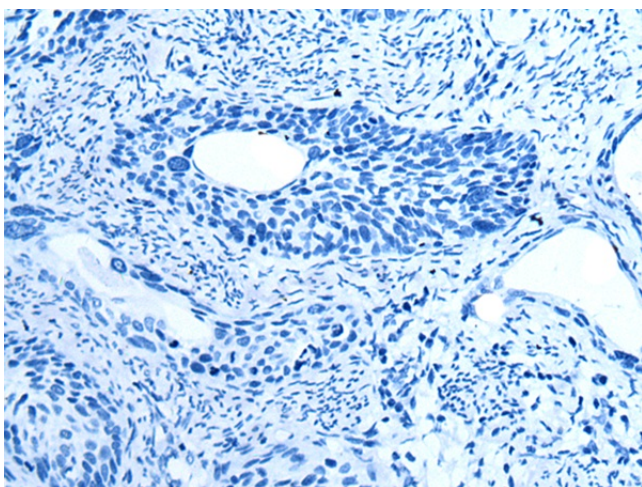
Immunohistochemistry of paraffin-embedded Human lung cancer tissue using TA365397 (ZNF37A Antibody) at dilution 1/30 (Original magnification:  $\times 200$ )



Immunohistochemistry of paraffin-embedded Human lung cancer tissue using TA365397 (ZNF37A Antibody) at dilution 1/30, treated with fusion protein. (Original magnification:  $\times 200$ )



Immunohistochemistry of paraffin-embedded Human cervical cancer tissue using TA365397 (ZNF37A Antibody) at dilution 1/30 (Original magnification:  $\times 200$ )



Immunohistochemistry of paraffin-embedded Human cervical cancer tissue using TA365397 (ZNF37A Antibody) at dilution 1/30, treated with fusion protein. (Original magnification:  $\times 200$ )