

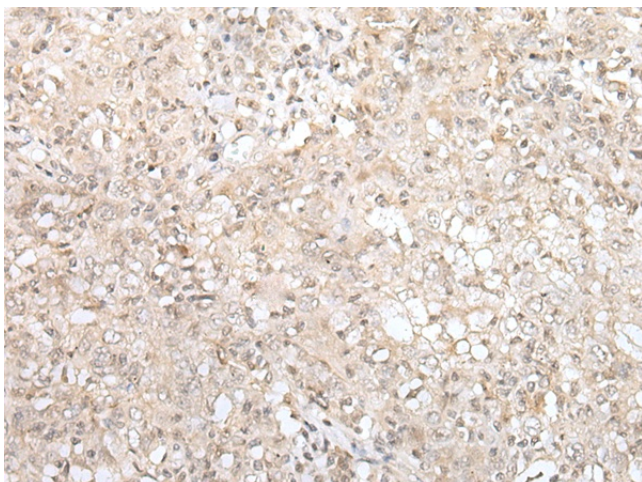
Product datasheet for **TA365388S**

ZNF263 Rabbit Polyclonal Antibody

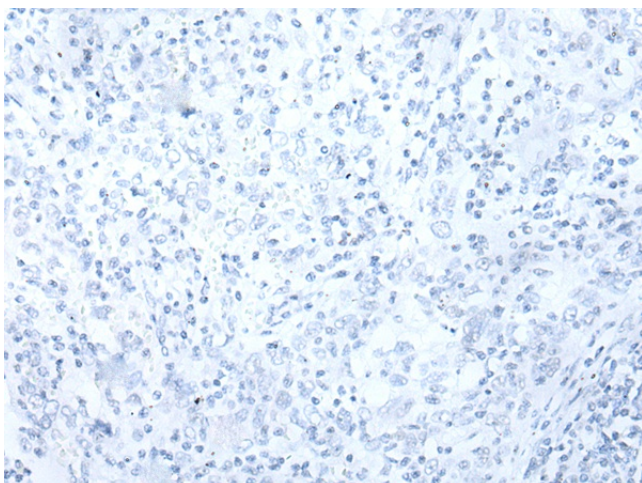
Product data:

Product Type:	Primary Antibodies
Applications:	IHC
Recommended Dilution:	IHC: 30-150 Positive control: Human esophagus cancer Predicted cell location: Cytoplasm and Nucleus
Reactivity:	Human
Host:	Rabbit
Isotype:	IgG
Clonality:	Polyclonal
Immunogen:	Fusion protein of human ZNF263
Formulation:	pH7.4 PBS, 0.05% NaN ₃ , 40% Glycerol
Purification:	Antigen affinity purification
Conjugation:	Unconjugated
Storage:	Store at -20°C.
Stability:	1 year
Gene Name:	zinc finger protein 263
Database Link:	Entrez Gene 10127 Human Q14978
Background:	ZNF263 (Zinc finger protein 263), also known as FPM315 or ZKSCAN12 (Zinc finger protein with KRAB and SCAN domains 12), is a 683 amino acid nuclear protein that contains nine C2H2-type zinc fingers, one KRAB domain and one SCAN box domain. ZNF263 acts as a transcriptional repressor in the nucleus and is expressed in various tissues including heart, brain, placenta, lung, liver, skeletal muscle, kidney, pancreas, spleen, thymus, prostate, testis, ovary, small intestine, colon and leukocyte.
Synonyms:	FPM315; ZKSCAN12

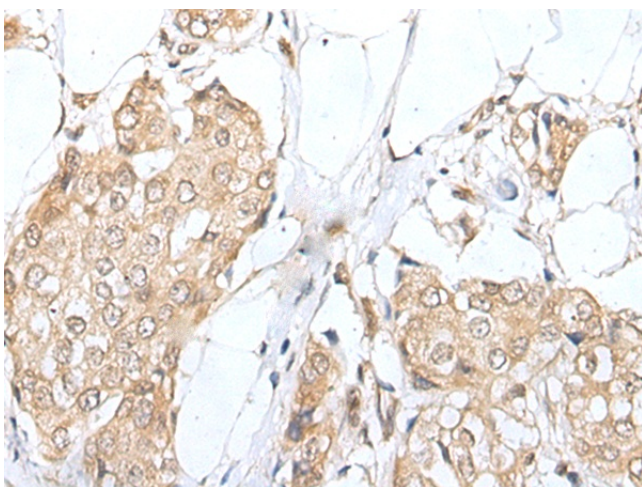
[View online »](#)

Product images:


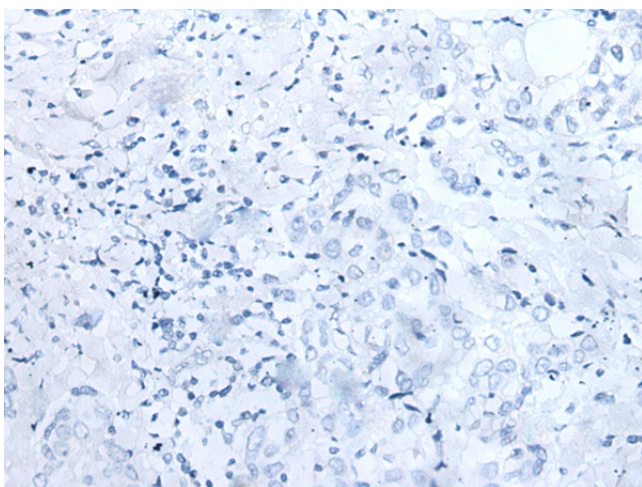
Immunohistochemistry of paraffin-embedded Human esophagus cancer tissue using [TA365388] (ZNF263 Antibody) at dilution 1/40 (Original magnification: ×200)



Immunohistochemistry of paraffin-embedded Human esophagus cancer tissue using [TA365388] (ZNF263 Antibody) at dilution 1/40, treated with fusion protein. (Original magnification: ×200)



Immunohistochemistry of paraffin-embedded Human breast cancer tissue using [TA365388] (ZNF263 Antibody) at dilution 1/40 (Original magnification: $\times 200$)



Immunohistochemistry of paraffin-embedded Human breast cancer tissue using [TA365388] (ZNF263 Antibody) at dilution 1/40, treated with fusion protein. (Original magnification: $\times 200$)