

Product datasheet for **TA365388**

ZNF263 Rabbit Polyclonal Antibody

Product data:

Product Type: Primary Antibodies
Applications: IHC
Recommended Dilution: IHC: 30-150
Positive control: Human esophagus cancer
Predicted cell location: Cytoplasm and Nucleus

Reactivity: Human

Host: Rabbit

Isotype: IgG

Clonality: Polyclonal

Immunogen: Fusion protein of human ZNF263

Formulation: pH7.4 PBS, 0.05% NaN₃, 40% Glycerol

Concentration: lot specific

Purification: Antigen affinity purification

Conjugation: Unconjugated

Storage: Store at -20°C.

Stability: 1 year

Gene Name: zinc finger protein 263

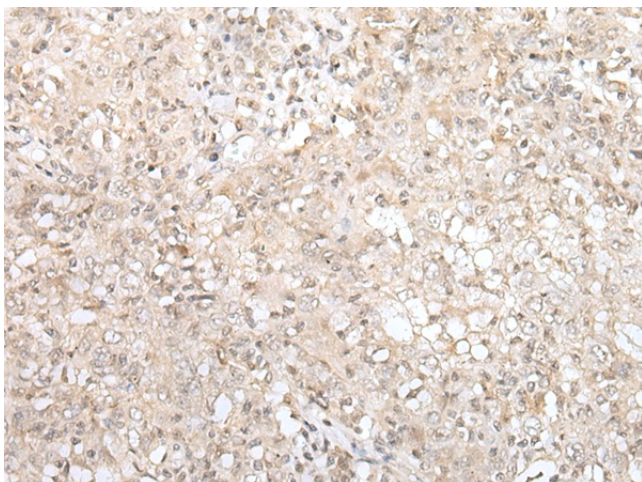
Database Link: [Entrez Gene 10127 Human](#)
[Q14978](#)

Background: ZNF263 (Zinc finger protein 263), also known as FPM315 or ZKSCAN12 (Zinc finger protein with KRAB and SCAN domains 12), is a 683 amino acid nuclear protein that contains nine C2H2-type zinc fingers, one KRAB domain and one SCAN box domain. ZNF263 acts as a transcriptional repressor in the nucleus and is expressed in various tissues including heart, brain, placenta, lung, liver, skeletal muscle, kidney, pancreas, spleen, thymus, prostate, testis, ovary, small intestine, colon and leukocyte.

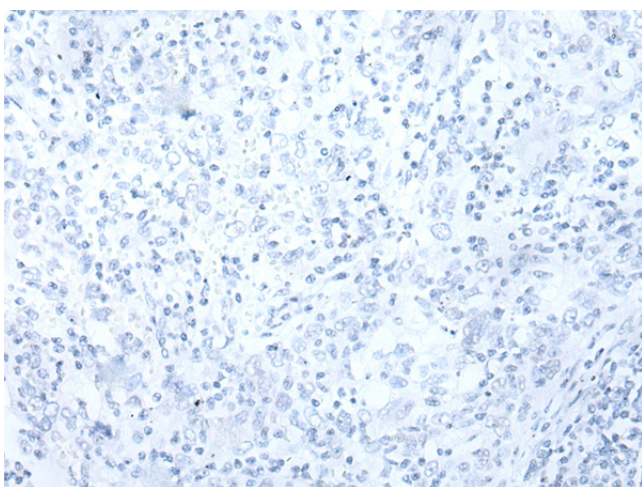
Synonyms: FPM315; ZKSCAN12



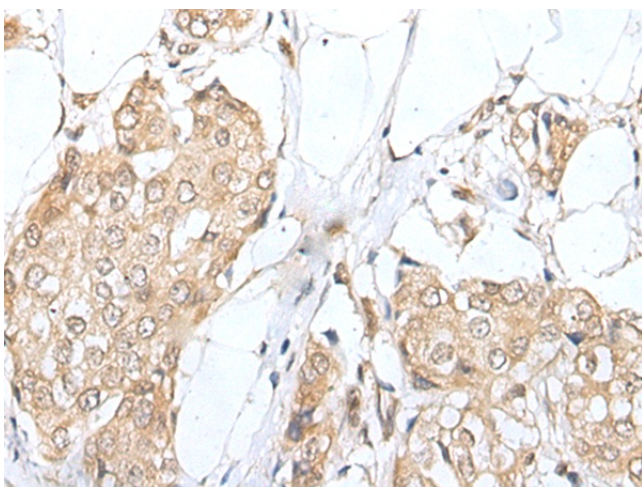
[View online »](#)

Product images:


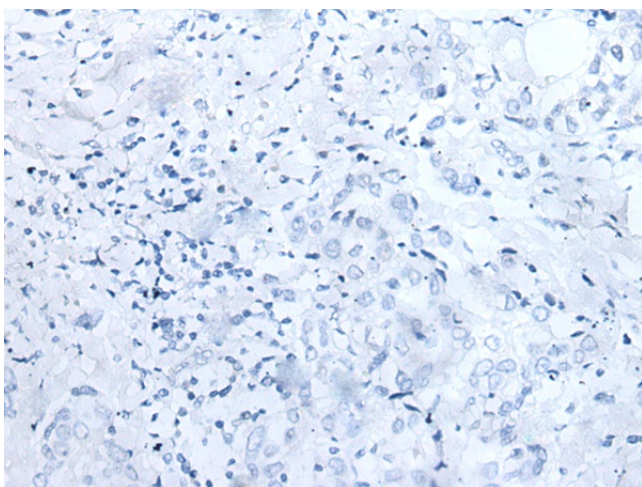
Immunohistochemistry of paraffin-embedded Human esophagus cancer tissue using TA365388 (ZNF263 Antibody) at dilution 1/40 (Original magnification: ×200)



Immunohistochemistry of paraffin-embedded Human esophagus cancer tissue using TA365388 (ZNF263 Antibody) at dilution 1/40, treated with fusion protein. (Original magnification: ×200)



Immunohistochemistry of paraffin-embedded Human breast cancer tissue using TA365388 (ZNF263 Antibody) at dilution 1/40 (Original magnification: $\times 200$)



Immunohistochemistry of paraffin-embedded Human breast cancer tissue using TA365388 (ZNF263 Antibody) at dilution 1/40, treated with fusion protein. (Original magnification: $\times 200$)