

## Product datasheet for **TA365382**

### ZNF207 Rabbit Polyclonal Antibody

#### Product data:

Product Type:	Primary Antibodies
Applications:	IHC, WB
Recommended Dilution:	WB: 500-2000 WB positive control: HEPG2 and Hela cell lysates IHC: 25-100 Positive control: Human cervical cancer Predicted cell location: Nucleus
Reactivity:	Human, Mouse
Host:	Rabbit
Isotype:	IgG
Clonality:	Polyclonal
Immunogen:	Fusion protein of human ZNF207
Formulation:	pH7.4 PBS, 0.05% NaN <sub>3</sub> , 40% Glycerol
Concentration:	lot specific
Purification:	Antigen affinity purification
Conjugation:	Unconjugated
Storage:	Store at -20°C.
Stability:	1 year
Predicted Protein Size:	51 kDa
Gene Name:	zinc finger protein 207
Database Link:	<a href="#">Entrez Gene 7756 Human O43670</a>



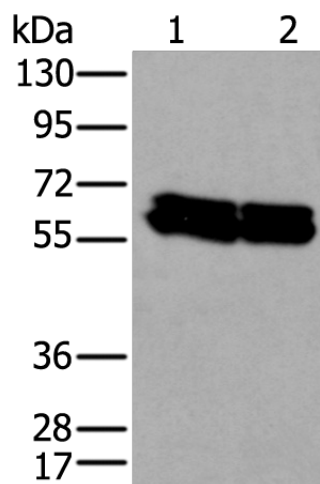
[View online »](#)

**Background:**

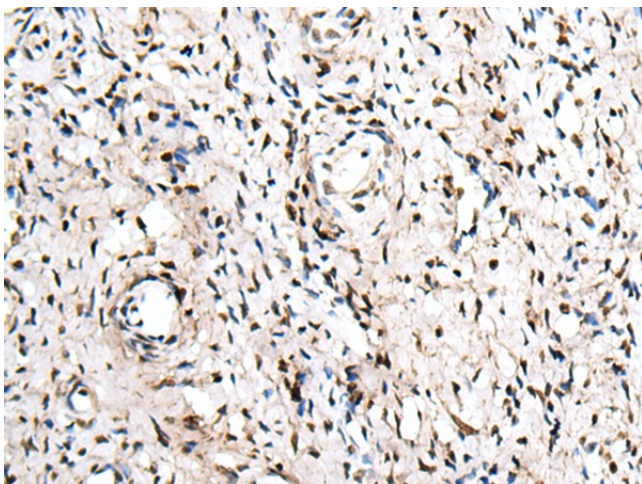
Zinc-finger proteins contain DNA-binding domains and have a wide variety of functions, most of which encompass some form of transcriptional activation or repression. The majority of zinc-finger proteins contain a Krüppel-type DNA binding domain and a KRAB domain, which is thought to interact with KAP1, thereby recruiting histone modifying proteins. ZNF207 (zinc finger protein 207) is a 478 amino acid protein that localizes to the nucleus and contains two C2H2-type zinc fingers. Expressed ubiquitously, ZNF207 may function as a transcription factor. Three isoforms of ZNF207 are expressed due to alternative splicing events.

**Synonyms:**

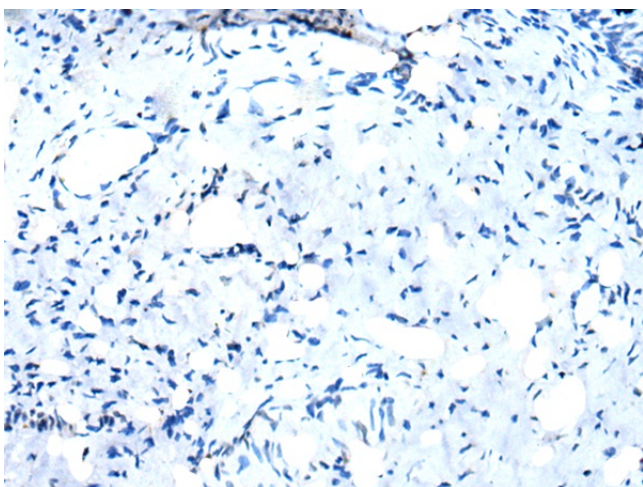
DKFZp761N202

**Product images:**

Gel: 8%SDS-PAGE  
Lysate: 40 µg  
Lane 1-2: HEPG2 and HeLa cell lysates  
Primary antibody: TA365382 (ZNF207 Antibody) at dilution 1/300  
Secondary antibody: Goat anti rabbit IgG at 1/8000 dilution  
Exposure time: 10 seconds



Immunohistochemistry of paraffin-embedded Human cervical cancer tissue using TA365382 (ZNF207 Antibody) at dilution 1/30 (Original magnification: ×200)



Immunohistochemistry of paraffin-embedded Human cervical cancer tissue using TA365382 (ZNF207 Antibody) at dilution 1/30, treated with fusion protein. (Original magnification:  $\times 200$ )