

Product datasheet for **TA365370**

LASP1 Rabbit Polyclonal Antibody

Product data:

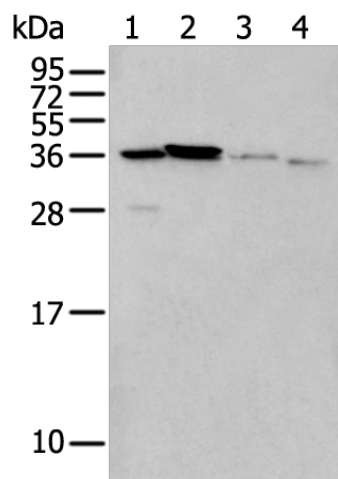
Product Type:	Primary Antibodies
Applications:	IHC, WB
Recommended Dilution:	WB: 500-2000 WB positive control: Hela and 293T cell, Mouse brain tissue and Human kidney tissue lysates IHC: 25-100 Positive control: Human tonsil Predicted cell location: Cytoplasm
Reactivity:	Human, Mouse, Rat
Host:	Rabbit
Isotype:	IgG
Clonality:	Polyclonal
Immunogen:	Full length fusion protein
Formulation:	pH7.4 PBS, 0.05% NaN ₃ , 40% Glycerol
Concentration:	lot specific
Purification:	Antigen affinity purification
Conjugation:	Unconjugated
Storage:	Store at -20°C.
Stability:	1 year
Predicted Protein Size:	30 kDa
Gene Name:	LIM and SH3 protein 1
Database Link:	Entrez Gene 3927 Human Q14847
Background:	This gene encodes a member of a subfamily of LIM proteins, characterized by a LIM motif and a domain of Src homology region 3, and also a member of the nebulin family of actin-binding proteins. The encoded protein is a cAMP and cGMP dependent signaling protein and binds to the actin cytoskeleton at extensions of the cell membrane. The encoded protein has been linked to metastatic breast cancer, hematopoietic tumors such as B-cell lymphomas, and colorectal cancer.



[View online »](#)

Synonyms: Lasp-1; MLN50

Product images:



Gel: 8%SDS-PAGE

Lysate: 40 μ g

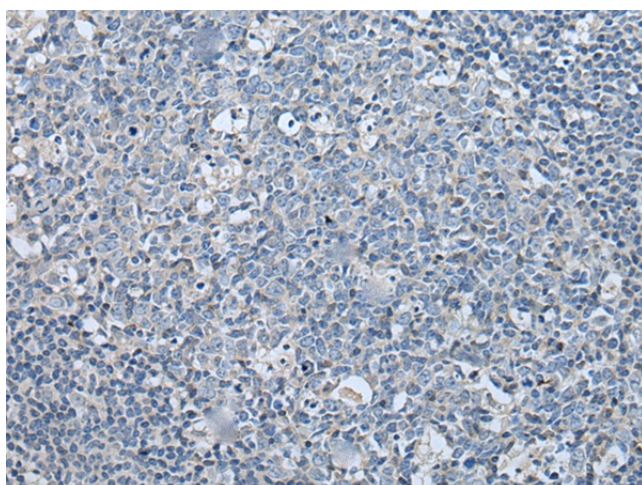
Lane 1-4: HeLa and 293T cell

Mouse brain tissue and Human kidney tissue
lysates

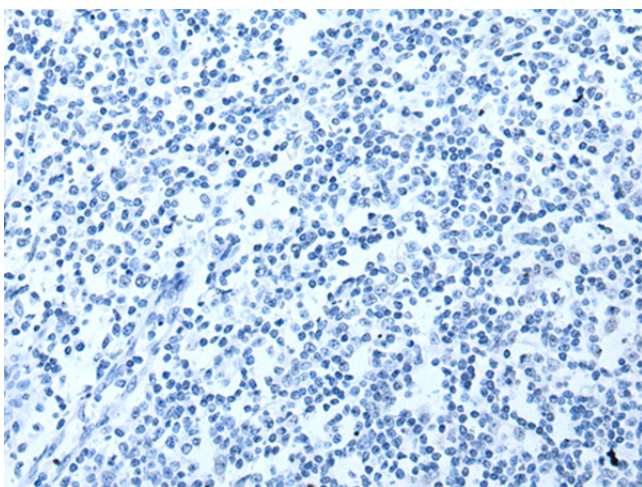
Primary antibody: TA365370 (LASP1 Antibody) at
dilution 1/350

Secondary antibody: Goat anti rabbit IgG at
1/8000 dilution

Exposure time: 10 seconds



Immunohistochemistry of paraffin-embedded
Human tonsil tissue using TA365370 (LASP1
Antibody) at dilution 1/35 (Original magnification:
 \times 200)



Immunohistochemistry of paraffin-embedded Human tonsil tissue using TA365370 (LASP1 Antibody) at dilution 1/35, treated with fusion protein. (Original magnification: $\times 200$)