

Product datasheet for **TA365360**

GCLC Rabbit Polyclonal Antibody

Product data:

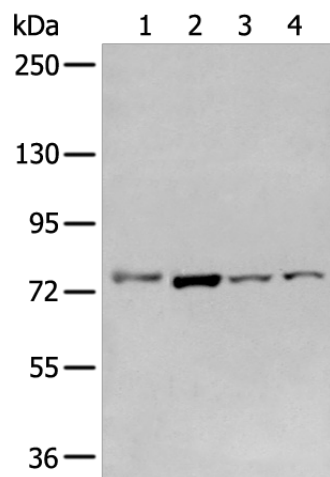
Product Type:	Primary Antibodies
Applications:	IHC, WB
Recommended Dilution:	WB: 500-2000 WB positive control: Raw264.7□A549□Hepg2 and Jurkat cell IHC: 25-100 Positive control: Human brain Predicted cell location: Cytoplasm and Cell membrane
Reactivity:	Human, Mouse, Rat
Host:	Rabbit
Isotype:	IgG
Clonality:	Polyclonal
Immunogen:	Fusion protein of human GCLC
Formulation:	pH7.4 PBS, 0.05% NaN ₃ , 40% Glycerol
Concentration:	lot specific
Purification:	Antigen affinity purification
Conjugation:	Unconjugated
Storage:	Store at -20°C.
Stability:	1 year
Predicted Protein Size:	73 kDa
Gene Name:	glutamate-cysteine ligase catalytic subunit
Database Link:	Entrez Gene 2729 Human P48506
Background:	Glutamate-cysteine ligase, also known as gamma-glutamylcysteine synthetase is the first rate-limiting enzyme of glutathione synthesis. The enzyme consists of two subunits, a heavy catalytic subunit and a light regulatory subunit. This locus encodes the catalytic subunit, while the regulatory subunit is derived from a different gene located on chromosome 1p22-p21. Mutations at this locus have been associated with hemolytic anemia due to deficiency of gamma-glutamylcysteine synthetase and susceptibility to myocardial infarction.



[View online >](#)

Synonyms: Gamma-ECS; GCL; GCS; GLCL; GLCLC

Product images:



Gel: 6%SDS-PAGE

Lysate: 40 μ g

Lane 1-4: Raw264.7

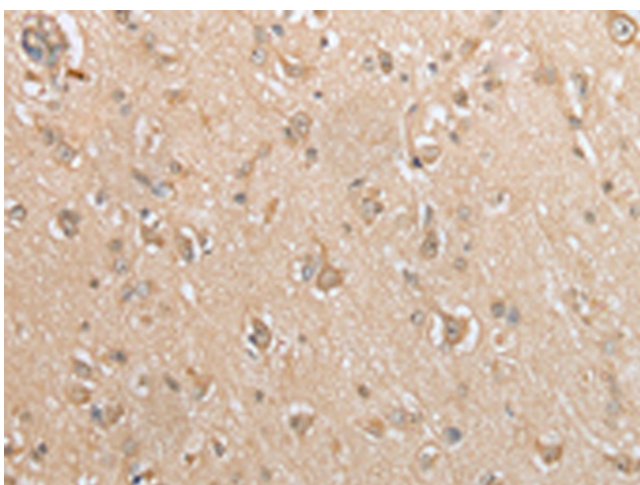
A549

Hepg2 and Jurkat cell

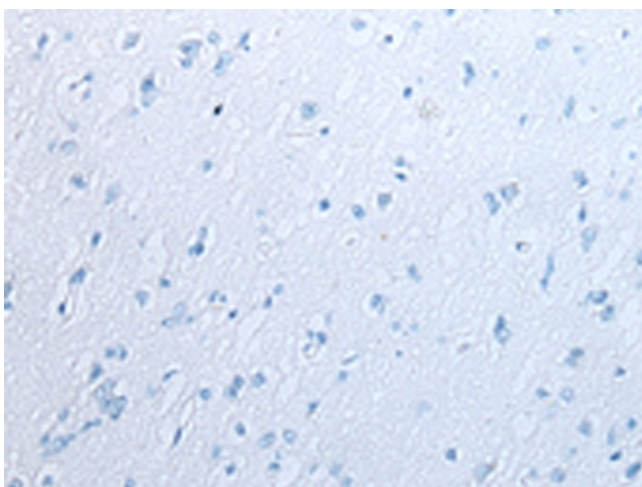
Primary antibody: TA365360 (GCLC Antibody) at dilution 1/800

Secondary antibody: Goat anti rabbit IgG at 1/8000 dilution

Exposure time: 30 seconds



Immunohistochemistry of paraffin-embedded Human brain tissue using TA365360 (GCLC Antibody) at dilution 1/35 (Original magnification: \times 200)



Immunohistochemistry of paraffin-embedded Human brain tissue using TA365360 (GCLC Antibody) at dilution 1/35, treated with fusion protein. (Original magnification: x200)