

Product datasheet for **TA365357**

NSE2 (NSMCE2) Rabbit Polyclonal Antibody

Product data:

Product Type:	Primary Antibodies
Applications:	IHC, WB
Recommended Dilution:	WB: 200-1000 WB positive control: 293T cell IHC: 30-150 Positive control: Human lung cancer Predicted cell location: Nucleus
Reactivity:	Human, Mouse, Rat
Host:	Rabbit
Isotype:	IgG
Clonality:	Polyclonal
Immunogen:	Full length fusion protein
Formulation:	pH7.4 PBS, 0.05% NaN ₃ , 40% Glycerol
Concentration:	lot specific
Purification:	Antigen affinity purification
Conjugation:	Unconjugated
Storage:	Store at -20°C.
Stability:	1 year
Predicted Protein Size:	28 kDa
Gene Name:	NSE2/MMS21 homolog, SMC5-SMC6 complex SUMO ligase
Database Link:	Entrez Gene 286053 Human Q96MF7



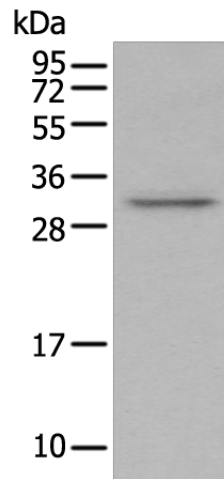
[View online »](#)

Background:

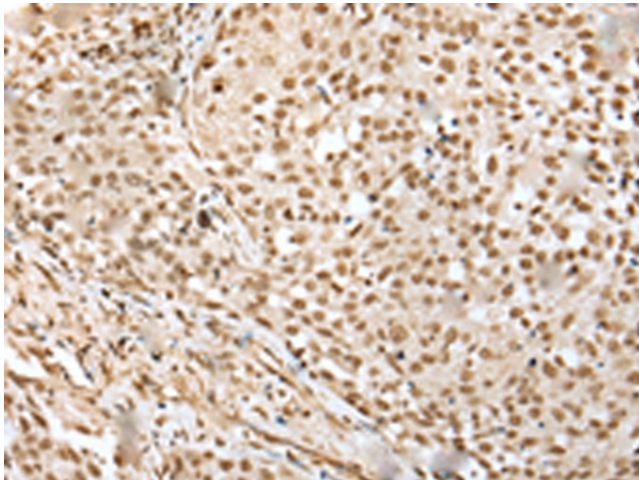
NSMCE2 is the E3 SUMO-protein ligase component of the SMC5-SMC6 complex, a complex involved in DNA double-strand breaks by homologous recombination. The complex may promote sister chromatid homologous recombination by recruiting the SMC1-SMC3 cohesin complex to double-strand breaks. NSMCE2 acts as a E3 ligase mediating SUMO attachment to various proteins such as SMC6L1 and TRAX, and maybe the cohesin components RAD21 and STAG2. SUMO protein-ligase activity is required for the prevention of DNA damage-induced apoptosis by facilitating DNA repair.

Synonyms:

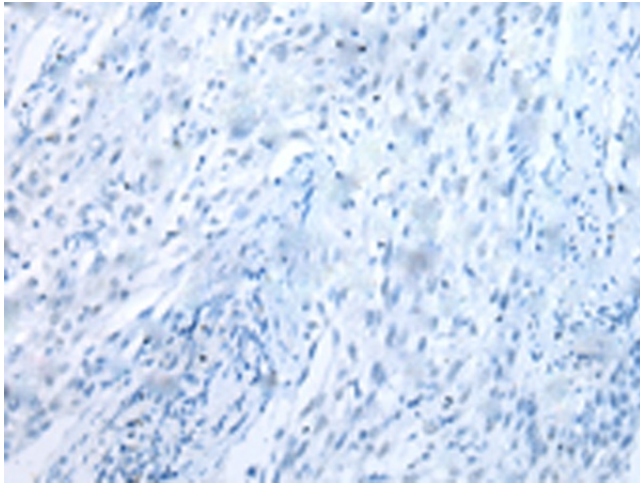
C8orf36; FLJ32440; hMMS21; MMS21; NSE2

Product images:

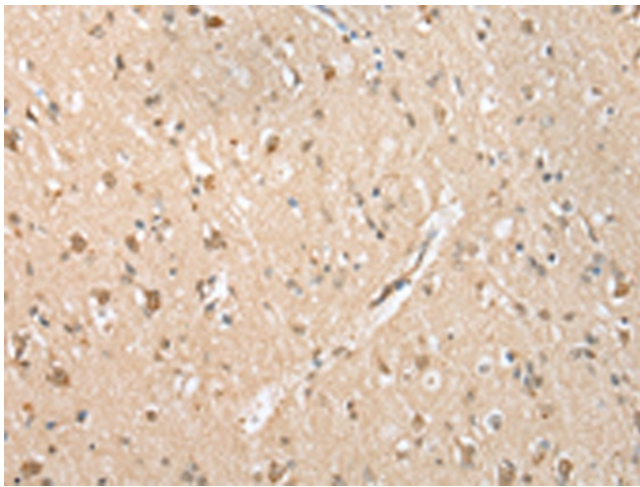
Gel: 12%SDS-PAGE
Lysate: 40 µg
Lane: 293T cell
Primary antibody: TA365357 (NSMCE2 Antibody) at dilution 1/400
Secondary antibody: Goat anti rabbit IgG at 1/8000 dilution
Exposure time: 30 seconds



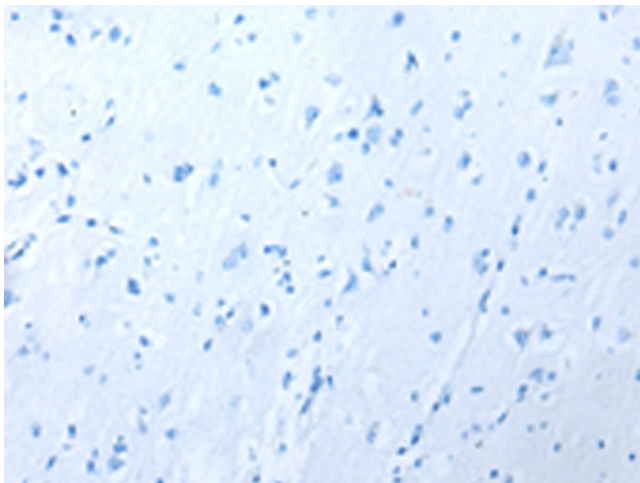
Immunohistochemistry of paraffin-embedded Human lung cancer tissue using TA365357 (NSMCE2 Antibody) at dilution 1/40 (Original magnification: ×200)



Immunohistochemistry of paraffin-embedded Human lung cancer tissue using TA365357 (NSMCE2 Antibody) at dilution 1/40, treated with fusion protein. (Original magnification: ×200)



Immunohistochemistry of paraffin-embedded Human brain tissue using TA365357 (NSMCE2 Antibody) at dilution 1/40 (Original magnification: ×200)



Immunohistochemistry of paraffin-embedded Human brain tissue using TA365357 (NSMCE2 Antibody) at dilution 1/40, treated with fusion protein. (Original magnification: ×200)