

Product datasheet for **TA365351**

RWDD1 Rabbit Polyclonal Antibody

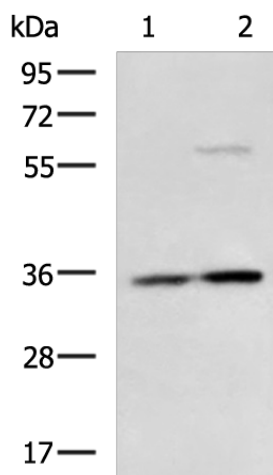
Product data:

Product Type:	Primary Antibodies
Applications:	IHC, WB
Recommended Dilution:	WB: 1000-5000 WB positive control: Hela and HepG2 cell lysates IHC: 200-400 Positive control: Human liver cancer Predicted cell location: Cytoplasm
Reactivity:	Human, Mouse, Rat
Host:	Rabbit
Isotype:	IgG
Clonality:	Polyclonal
Immunogen:	Fusion protein of human RWDD1
Formulation:	pH7.4 PBS, 0.05% NaN ₃ , 40% Glycerol
Concentration:	lot specific
Purification:	Antigen affinity purification
Conjugation:	Unconjugated
Storage:	Store at -20°C.
Stability:	1 year
Predicted Protein Size:	28 kDa
Gene Name:	RWD domain containing 1
Database Link:	Entrez Gene 51389 Human Q9H446
Background:	Protects DRG2 from proteolytic degradation.
Synonyms:	CGI-24; DFRP2; PTD013

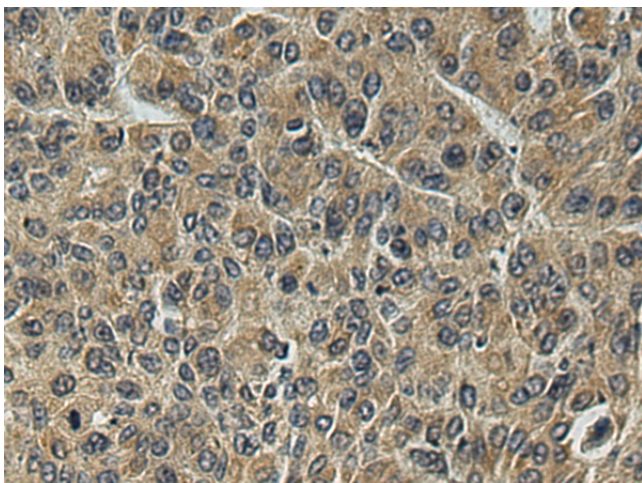


[View online »](#)

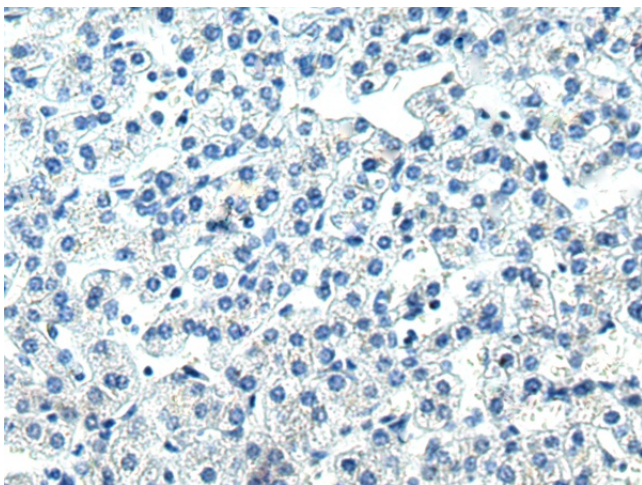
Product images:



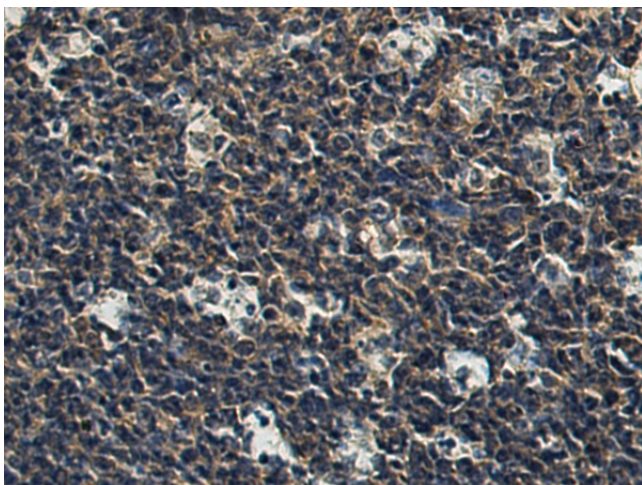
Gel: 8%SDS-PAGE
Lysate: 40 μ g
Lane 1-2: Hela and HepG2 cell lysates
Primary antibody: TA365351 (RWDD1 Antibody)
at dilution 1/1300
Secondary antibody: Goat anti rabbit IgG at
1/5000 dilution
Exposure time: 2 minutes



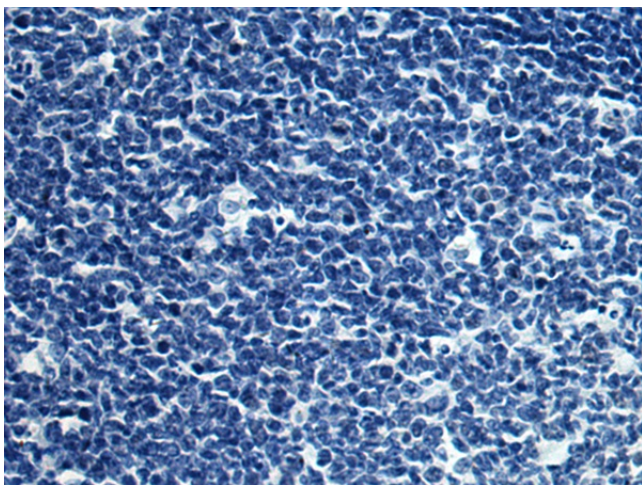
Immunohistochemistry of paraffin-embedded
Human liver cancer tissue using TA365351
(RWDD1 Antibody) at dilution 1/220 (Original
magnification: \times 200)



Immunohistochemistry of paraffin-embedded Human liver cancer tissue using TA365351 (RWDD1 Antibody) at dilution 1/220, treated with fusion protein. (Original magnification: ×200)



Immunohistochemistry of paraffin-embedded Human tonsil tissue using TA365351 (RWDD1 Antibody) at dilution 1/220 (Original magnification: ×200)



Immunohistochemistry of paraffin-embedded Human tonsil tissue using TA365351 (RWDD1 Antibody) at dilution 1/220, treated with fusion protein. (Original magnification: ×200)