

Product datasheet for **TA365350**

DCI (ECI1) Rabbit Polyclonal Antibody

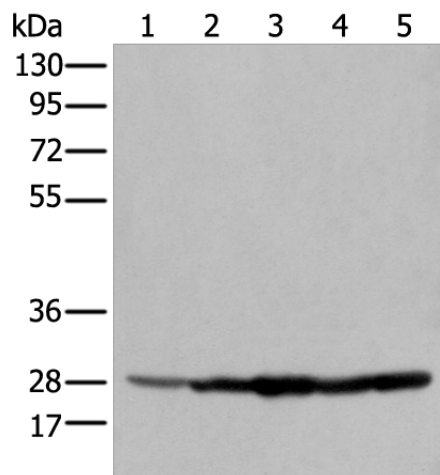
Product data:

Product Type:	Primary Antibodies
Applications:	IHC, WB
Recommended Dilution:	WB: 500-2000 WB positive control: Human fetal liver tissue □ MCF-7 cell □ 293T cell □ Hela cell □ A549 cell IHC: 25-100 Positive control: Human cervical cancer Predicted cell location: Cytoplasm
Reactivity:	Human
Host:	Rabbit
Isotype:	IgG
Clonality:	Polyclonal
Immunogen:	Fusion protein of human ECI1
Formulation:	pH7.4 PBS, 0.05% NaN ₃ , 40% Glycerol
Concentration:	lot specific
Purification:	Antigen affinity purification
Conjugation:	Unconjugated
Storage:	Store at -20°C.
Stability:	1 year
Predicted Protein Size:	33 kDa
Gene Name:	enoyl-CoA delta isomerase 1
Database Link:	Entrez Gene 1632 Human P42126
Background:	This gene encodes a member of the hydratase/isomerase superfamily. The protein encoded is a key mitochondrial enzyme involved in beta-oxidation of unsaturated fatty acids. It catalyzes the transformation of 3-cis and 3-trans-enoyl-CoA esters arising during the stepwise degradation of cis-, mono-, and polyunsaturated fatty acids to the 2-trans-enoyl-CoA intermediates. Alternatively spliced transcript variants have been described.
Synonyms:	Dci; eci

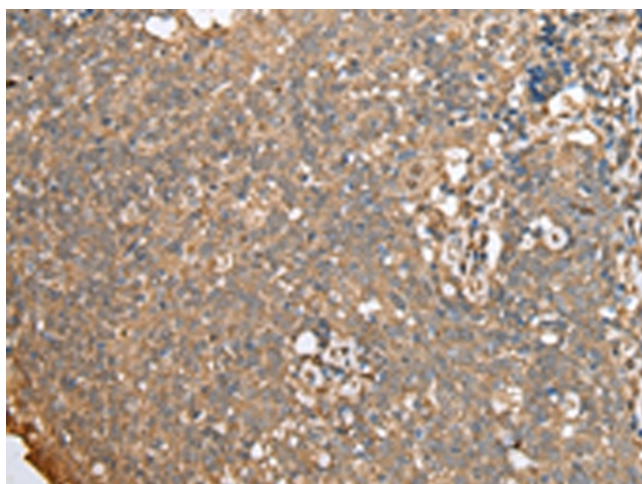


[View online »](#)

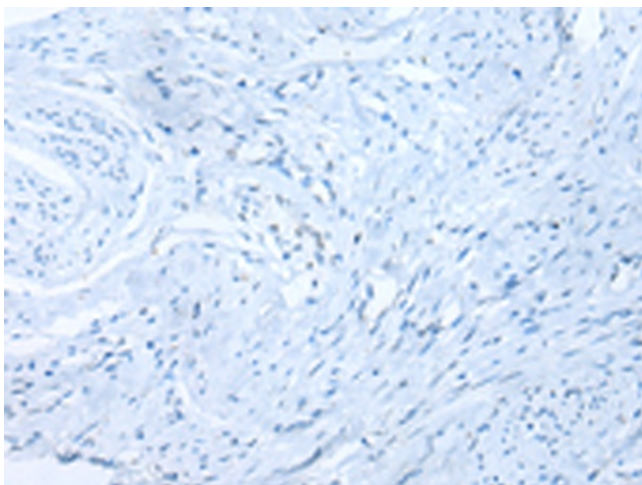
Product images:



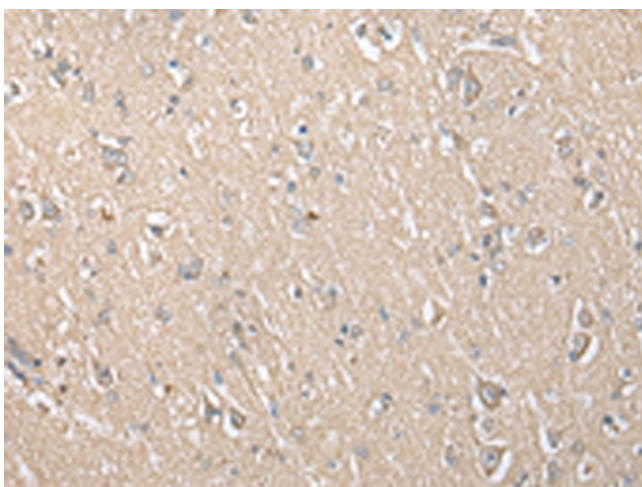
Gel: 8%SDS-PAGE
 Lysate: 40 μ g
 Lane 1-5: Human fetal liver tissue
 MCF-7 cell
 293T cell
 HeLa cell
 A549 cell
 Primary antibody: TA365350 (EC11 Antibody) at dilution 1/350
 Secondary antibody: Goat anti rabbit IgG at 1/8000 dilution
 Exposure time: 1 second



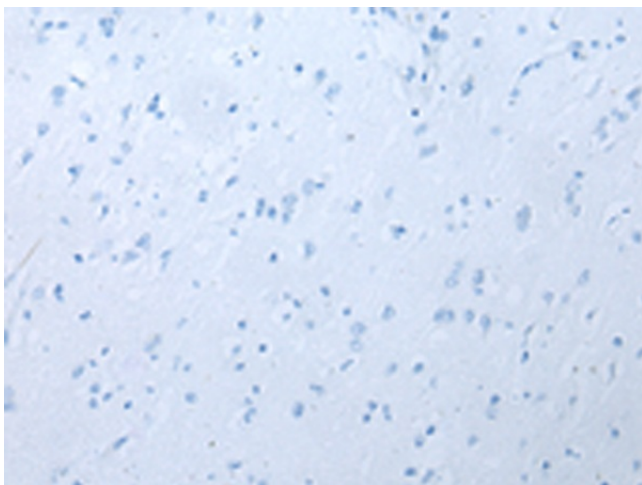
Immunohistochemistry of paraffin-embedded Human cervical cancer tissue using TA365350 (EC11 Antibody) at dilution 1/30 (Original magnification: \times 200)



Immunohistochemistry of paraffin-embedded Human cervical cancer tissue using TA365350 (EC11 Antibody) at dilution 1/30, treated with fusion protein. (Original magnification: ×200)



Immunohistochemistry of paraffin-embedded Human brain tissue using TA365350 (EC11 Antibody) at dilution 1/30 (Original magnification: ×200)



Immunohistochemistry of paraffin-embedded Human brain tissue using TA365350 (EC11 Antibody) at dilution 1/30, treated with fusion protein. (Original magnification: ×200)