

## Product datasheet for **TA365348S**

### ALKBH8 Rabbit Polyclonal Antibody

#### Product data:

Product Type:	Primary Antibodies
Applications:	IHC, WB
Recommended Dilution:	WB: 500-2000 WB positive control: A549 and Jurkat cell lysates IHC: 25-100 Positive control: Human cervical cancer Predicted cell location: Cytoplasm or Nucleus
Reactivity:	Human
Host:	Rabbit
Isotype:	IgG
Clonality:	Polyclonal
Immunogen:	Full length fusion protein
Formulation:	pH7.4 PBS, 0.05% NaN <sub>3</sub> , 40% Glycerol
Purification:	Antigen affinity purification
Conjugation:	Unconjugated
Storage:	Store at -20°C.
Stability:	1 year
Predicted Protein Size:	75 kDa
Gene Name:	alkB homolog 8, tRNA methyltransferase
Database Link:	<a href="#">Entrez Gene 91801 Human Q96BT7</a>



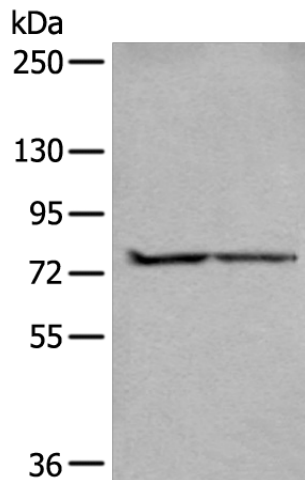
[View online »](#)

**Background:**

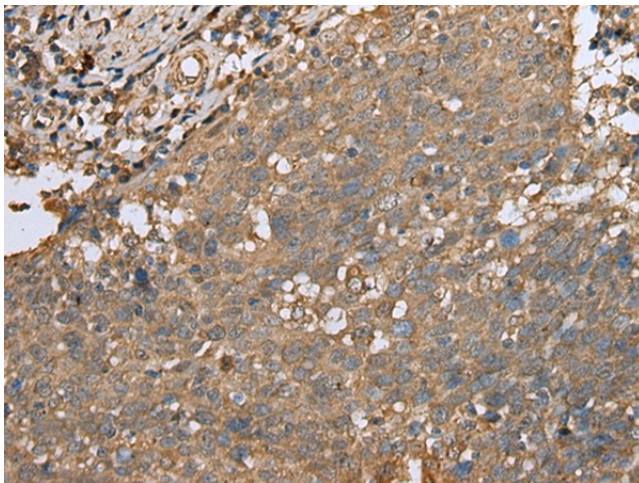
ALKBH8 (alkylated DNA repair protein AlkB homolog 8) is a 664 amino acid protein that is encoded by a gene located on chromosome 11. ALKBH8 contains one RRM (RNA recognition motif) domain and belongs to the AlkB family of proteins. ALKBH8 is one of many homologs of the Escherichia coli protein AlkB. AlkB functions to protect DNA and RNA against damage from environmental methylating compounds by directly reversing 1-methyladenine (1-meA) and 3-methylcytosine (3-meC) cytotoxic alkylation lesions in DNA and RNA. The enzyme acts by oxidative demethylation, utilizing ferrous iron and alpha-ketoglutarate as cofactors, 2-oxoglutarate as a co-substrate and molecular oxygen as the oxidizing agent. Three isoforms exist for ALKBH8 due alternative splicing of the gene.

**Synonyms:**

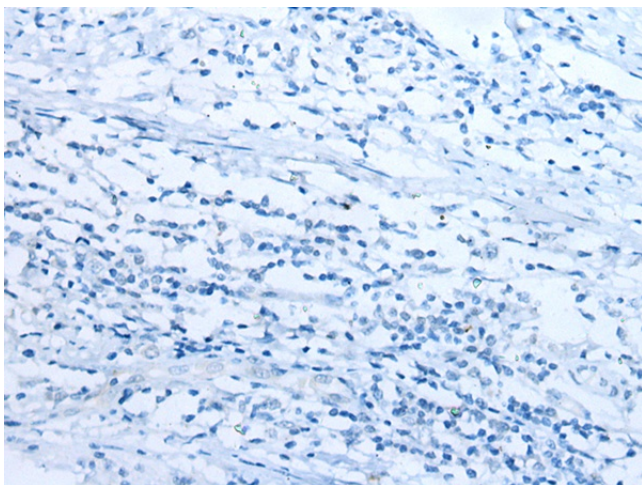
ABH8; FLJ38204; MGC10235; OTTHUMP00000211286; OTTHUMP00000211287

**Product images:**


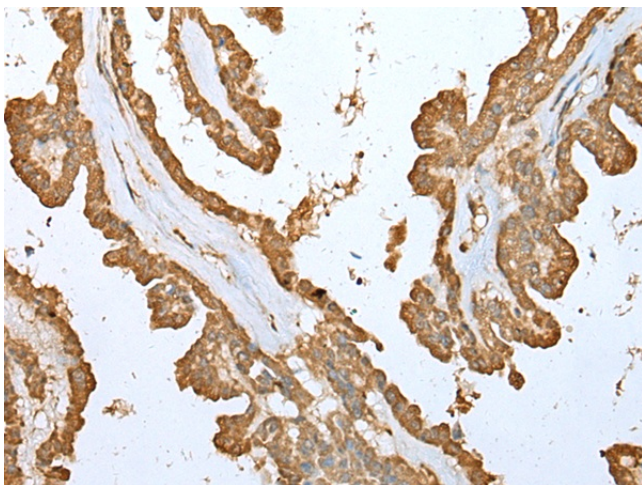
Gel: 6%SDS-PAGE  
 Lysate: 40 µg  
 Lane 1-2: A549 and Jurkat cell lysates  
 Primary antibody: [TA365348] (ALKBH8 Antibody) at dilution 1/300  
 Secondary antibody: Goat anti rabbit IgG at 1/8000 dilution  
 Exposure time: 3 seconds



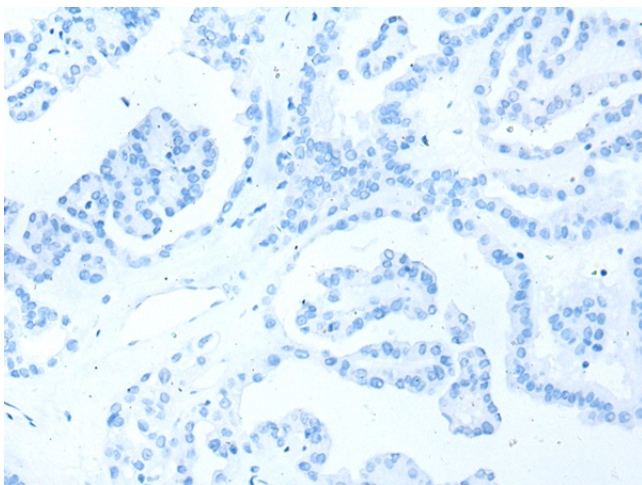
Immunohistochemistry of paraffin-embedded Human cervical cancer tissue using [TA365348] (ALKBH8 Antibody) at dilution 1/25 (Original magnification: ×200)



Immunohistochemistry of paraffin-embedded Human cervical cancer tissue using [TA365348] (ALKBH8 Antibody) at dilution 1/25, treated with fusion protein. (Original magnification: ×200)



Immunohistochemistry of paraffin-embedded Human thyroid cancer tissue using [TA365348] (ALKBH8 Antibody) at dilution 1/25 (Original magnification: ×200)



Immunohistochemistry of paraffin-embedded Human thyroid cancer tissue using [TA365348] (ALKBH8 Antibody) at dilution 1/25, treated with fusion protein. (Original magnification: ×200)