

Product datasheet for **TA365347**

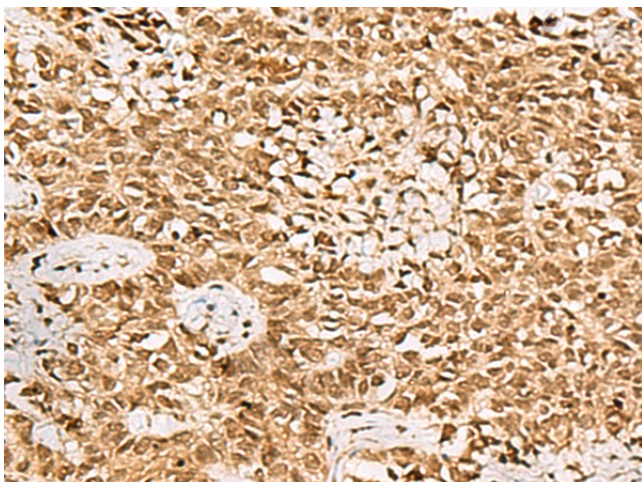
LRRC2 Rabbit Polyclonal Antibody

Product data:

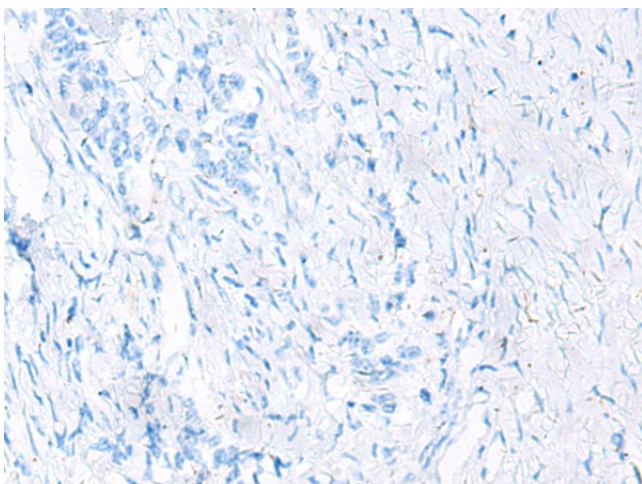
Product Type:	Primary Antibodies
Applications:	IHC
Recommended Dilution:	IHC: 50-200 Positive control: Human ovarian cancer Predicted cell location: Nucleus and Cytoplasm
Reactivity:	Human, Mouse
Host:	Rabbit
Isotype:	IgG
Clonality:	Polyclonal
Immunogen:	Fusion protein of human LRRC2
Formulation:	pH7.4 PBS, 0.05% NaN ₃ , 40% Glycerol
Concentration:	lot specific
Purification:	Antigen affinity purification
Conjugation:	Unconjugated
Storage:	Store at -20°C.
Stability:	1 year
Gene Name:	leucine rich repeat containing 2
Database Link:	Entrez Gene 79442 Human Q9BYS8
Background:	This gene encodes a member of the leucine-rich repeat-containing family of proteins, which function in diverse biological pathways. This family member may possibly be a nuclear protein. Similarity to the RAS suppressor protein, as well as expression down-regulation observed in tumor cells, suggests that it may function as a tumor suppressor. The gene is located in the chromosome 3 common eliminated region 1 (C3CER1), a 1.4 Mb region that is commonly deleted in diverse tumors. A related pseudogene has been identified on chromosome 2.
Synonyms:	LRRC2



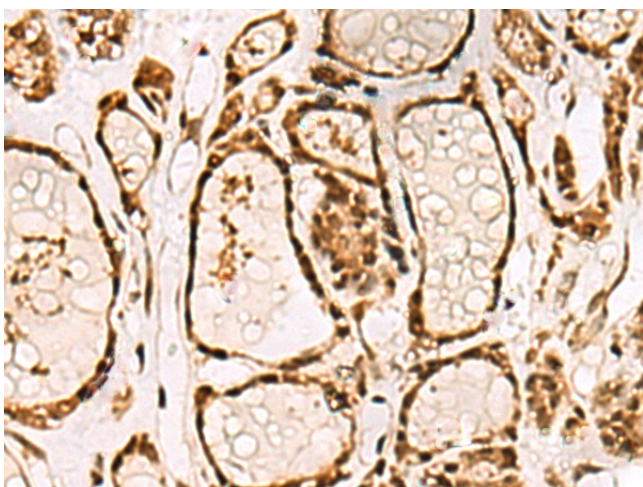
[View online »](#)

Product images:

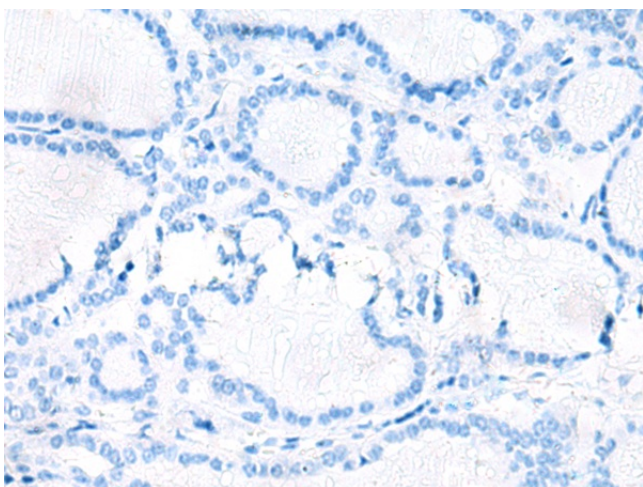
Immunohistochemistry of paraffin-embedded Human ovarian cancer tissue using TA365347 (LRRC2 Antibody) at dilution 1/70 (Original magnification: $\times 200$)



Immunohistochemistry of paraffin-embedded Human ovarian cancer tissue using TA365347 (LRRC2 Antibody) at dilution 1/70, treated with fusion protein. (Original magnification: $\times 200$)



Immunohistochemistry of paraffin-embedded Human thyroid cancer tissue using TA365347 (LRRC2 Antibody) at dilution 1/70 (Original magnification: $\times 200$)



Immunohistochemistry of paraffin-embedded Human thyroid cancer tissue using TA365347 (LRRC2 Antibody) at dilution 1/70, treated with fusion protein. (Original magnification: $\times 200$)