

Product datasheet for **TA365345S**

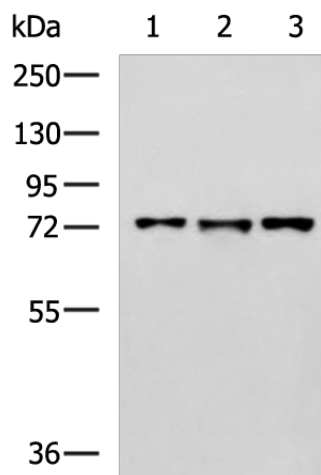
LRRC45 Rabbit Polyclonal Antibody

Product data:

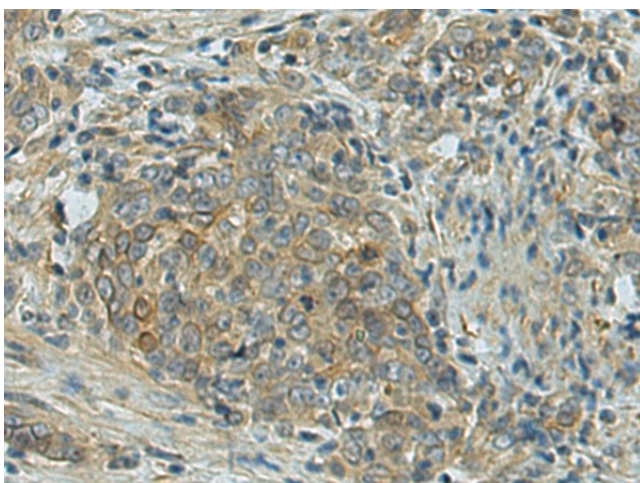
Product Type:	Primary Antibodies
Applications:	IHC, WB
Recommended Dilution:	WB: 500-2000 WB positive control: Raji, K562 and HepG2 cell lysates IHC: 100-200 Positive control: Human esophagus cancer Predicted cell location: Cytoplasm
Reactivity:	Human, Mouse
Host:	Rabbit
Isotype:	IgG
Clonality:	Polyclonal
Immunogen:	Fusion protein of human LRRC45
Formulation:	pH7.4 PBS, 0.05% NaN ₃ , 40% Glycerol
Purification:	Antigen affinity purification
Conjugation:	Unconjugated
Storage:	Store at -20°C.
Stability:	1 year
Predicted Protein Size:	76 kDa
Gene Name:	leucine rich repeat containing 45
Database Link:	Entrez Gene 201255 Human Q96CN5
Background:	Component of the proteinaceous fiber-like linker between two centrioles, required for centrosome cohesion.
Synonyms:	MGC20806



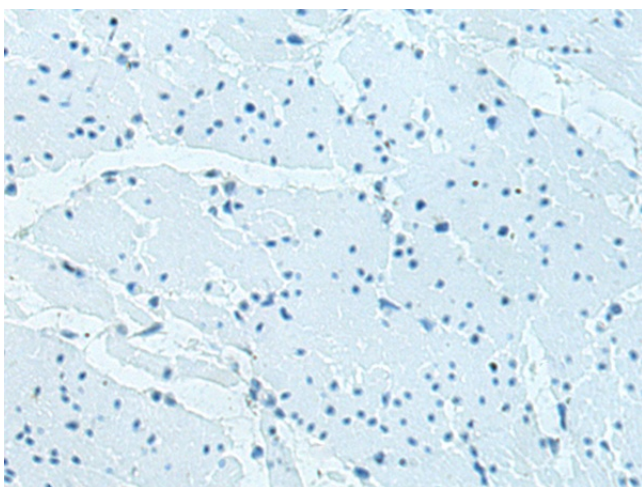
[View online »](#)

Product images:


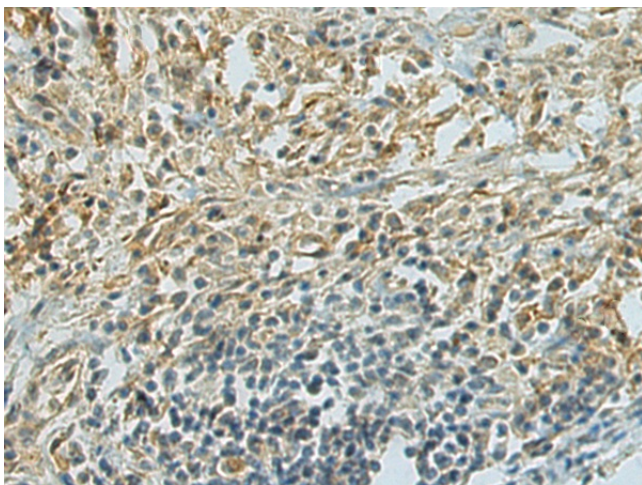
Gel: 8%SDS-PAGE
 Lysate: 40 µg
 Lane 1-3: Raji
 K562 and HepG2 cell lysates
 Primary antibody: [TA365345] (LRRC45 Antibody)
 at dilution 1/800
 Secondary antibody: Goat anti rabbit IgG at
 1/5000 dilution
 Exposure time: 2 minutes



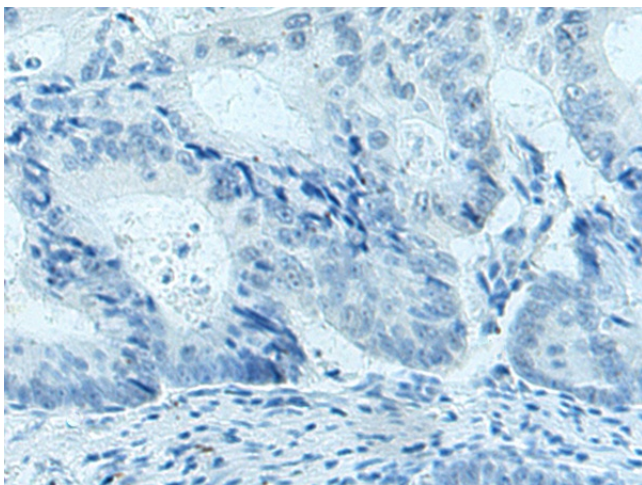
Immunohistochemistry of paraffin-embedded
 Human esophagus cancer tissue using
 [TA365345] (LRRC45 Antibody) at dilution 1/120
 (Original magnification: ×200)



Immunohistochemistry of paraffin-embedded Human esophagus cancer tissue using [TA365345] (LRRC45 Antibody) at dilution 1/120, treated with fusion protein. (Original magnification: ×200)



Immunohistochemistry of paraffin-embedded Human colorectal cancer tissue using [TA365345] (LRRC45 Antibody) at dilution 1/120 (Original magnification: ×200)



Immunohistochemistry of paraffin-embedded Human colorectal cancer tissue using [TA365345] (LRRC45 Antibody) at dilution 1/120, treated with fusion protein. (Original magnification: ×200)