

## Product datasheet for **TA365345**

### LRRC45 Rabbit Polyclonal Antibody

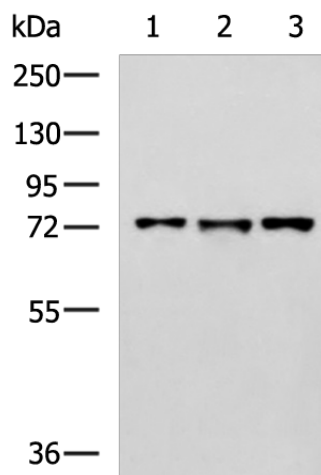
#### Product data:

Product Type:	Primary Antibodies
Applications:	IHC, WB
Recommended Dilution:	WB: 500-2000 WB positive control: Raji, K562 and HepG2 cell lysates IHC: 100-200 Positive control: Human esophagus cancer Predicted cell location: Cytoplasm
Reactivity:	Human, Mouse
Host:	Rabbit
Isotype:	IgG
Clonality:	Polyclonal
Immunogen:	Fusion protein of human LRRC45
Formulation:	pH7.4 PBS, 0.05% NaN <sub>3</sub> , 40% Glycerol
Concentration:	lot specific
Purification:	Antigen affinity purification
Conjugation:	Unconjugated
Storage:	Store at -20°C.
Stability:	1 year
Predicted Protein Size:	76 kDa
Gene Name:	leucine rich repeat containing 45
Database Link:	<a href="#">Entrez Gene 201255 Human Q96CN5</a>
Background:	Component of the proteinaceous fiber-like linker between two centrioles, required for centrosome cohesion.
Synonyms:	MGC20806

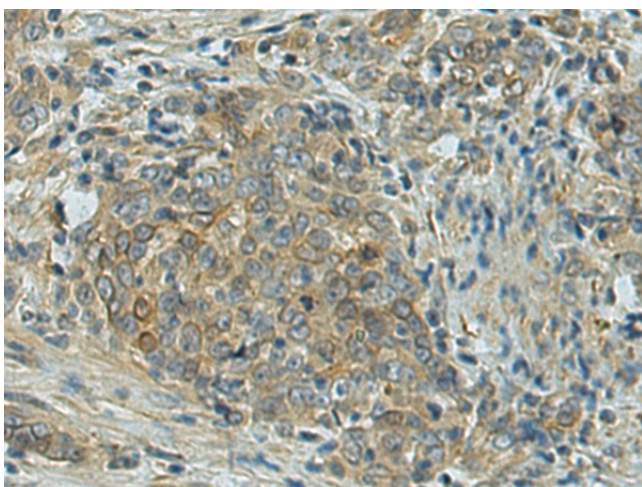


[View online »](#)

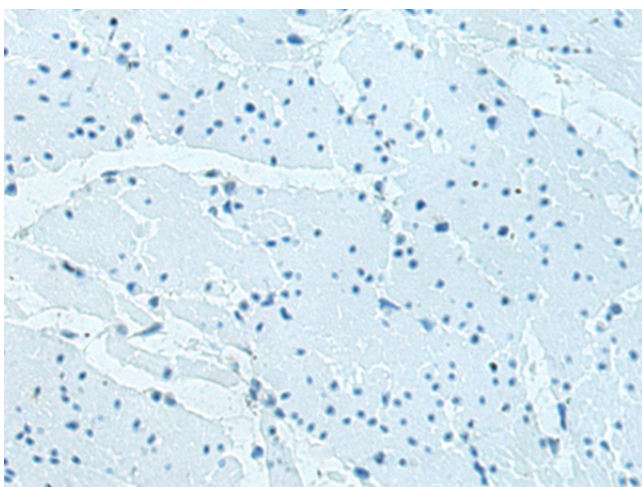
## Product images:



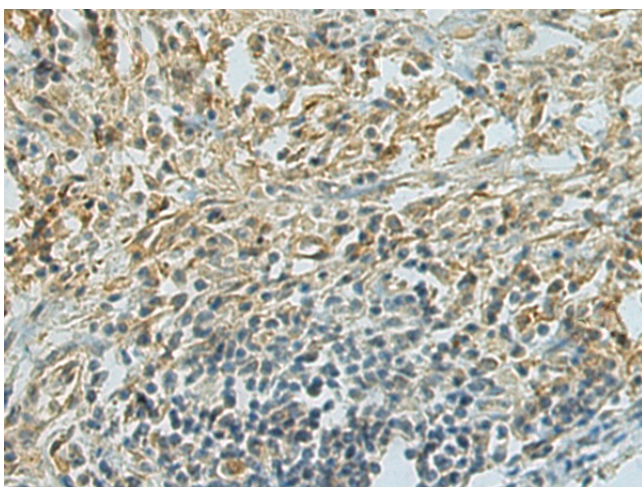
Gel: 8%SDS-PAGE  
Lysate: 40  $\mu$ g  
Lane 1-3: Raji  
K562 and HepG2 cell lysates  
Primary antibody: TA365345 (LRRC45 Antibody)  
at dilution 1/800  
Secondary antibody: Goat anti rabbit IgG at  
1/5000 dilution  
Exposure time: 2 minutes



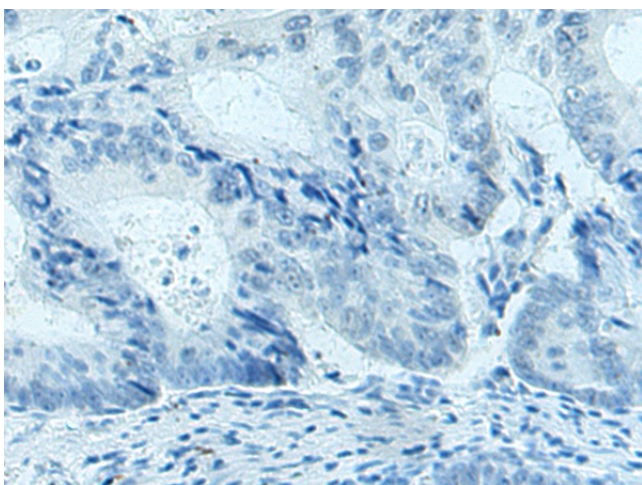
Immunohistochemistry of paraffin-embedded  
Human esophagus cancer tissue using TA365345  
(LRRC45 Antibody) at dilution 1/120 (Original  
magnification:  $\times$ 200)



Immunohistochemistry of paraffin-embedded Human esophagus cancer tissue using TA365345 (LRRC45 Antibody) at dilution 1/120, treated with fusion protein. (Original magnification: ×200)



Immunohistochemistry of paraffin-embedded Human colorectal cancer tissue using TA365345 (LRRC45 Antibody) at dilution 1/120 (Original magnification: ×200)



Immunohistochemistry of paraffin-embedded Human colorectal cancer tissue using TA365345 (LRRC45 Antibody) at dilution 1/120, treated with fusion protein. (Original magnification: ×200)