

Product datasheet for **TA365338**

EBI3 Rabbit Polyclonal Antibody

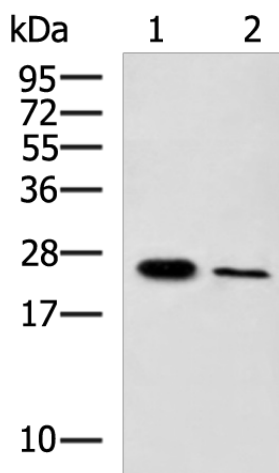
Product data:

Product Type:	Primary Antibodies
Applications:	IHC, WB
Recommended Dilution:	WB: 500-2000 WB positive control: Mouse kidney tissue, 293T cell lysates IHC: 150-300 Positive control: Human thyroid cancer Predicted cell location: Secreted
Reactivity:	Human, Mouse
Host:	Rabbit
Isotype:	IgG
Clonality:	Polyclonal
Immunogen:	Fusion protein of human EBI3
Formulation:	pH7.4 PBS, 0.05% NaN ₃ , 40% Glycerol
Concentration:	lot specific
Purification:	Antigen affinity purification
Conjugation:	Unconjugated
Storage:	Store at -20°C.
Stability:	1 year
Predicted Protein Size:	25 kDa
Gene Name:	Epstein-Barr virus induced 3
Database Link:	Entrez Gene 10148 Human Q14213
Background:	This gene was identified by its induced expression in B lymphocytes in response Epstein-Barr virus infection. It encodes a secreted glycoprotein belonging to the hematopoietin receptor family, and heterodimerizes with a 28 kDa protein to form interleukin 27 (IL-27). IL-27 regulates T cell and inflammatory responses, in part by activating the Jak/STAT pathway of CD4 ⁺ T cells.
Synonyms:	IL-27B; IL27B

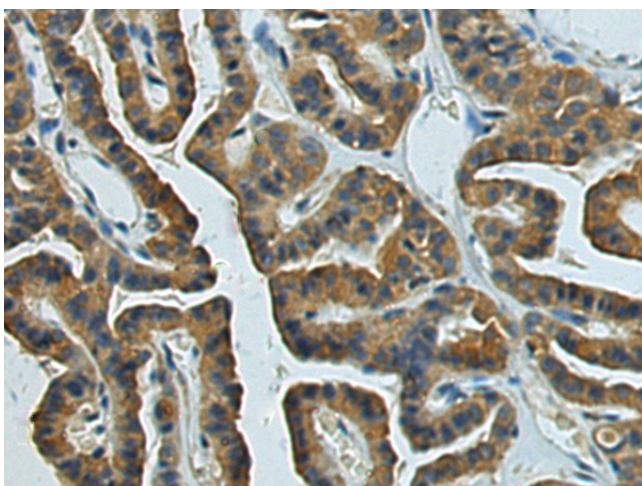


[View online »](#)

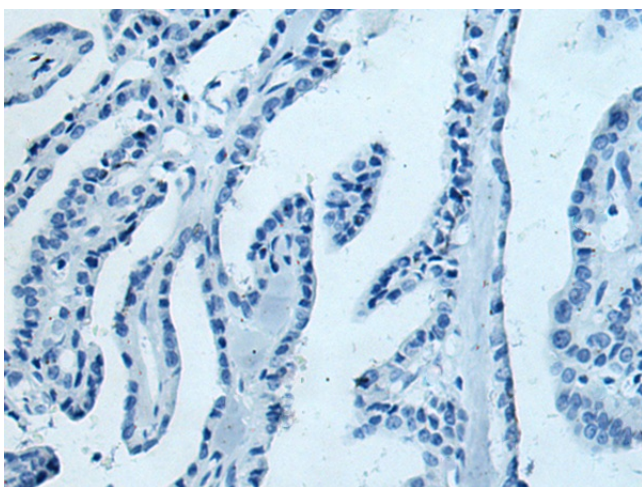
Product images:



Gel: 12%SDS-PAGE
Lysate: 40 μ g
Lane 1-2: Mouse kidney tissue
293T cell lysates
Primary antibody: TA365338 (EBI3 Antibody) at
dilution 1/400
Secondary antibody: Goat anti rabbit IgG at
1/5000 dilution
Exposure time: 3 minutes



Immunohistochemistry of paraffin-embedded
Human thyroid cancer tissue using TA365338
(EBI3 Antibody) at dilution 1/130 (Original
magnification: \times 200)



Immunohistochemistry of paraffin-embedded Human thyroid cancer tissue using TA365338 (EBI3 Antibody) at dilution 1/130, treated with fusion protein. (Original magnification: ×200)