

## Product datasheet for **TA365334**

### **PRTFDC1 Rabbit Polyclonal Antibody**

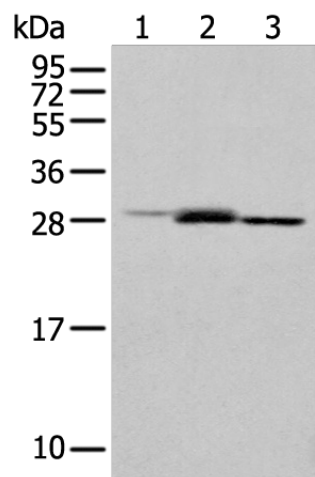
#### **Product data:**

Product Type:	Primary Antibodies
Applications:	WB
Recommended Dilution:	WB: 200-1000 WB positive control: Human fetal brain tissue□Human cerebrum tissue□Human testis tissue
Reactivity:	Human
Host:	Rabbit
Isotype:	IgG
Clonality:	Polyclonal
Immunogen:	Full length fusion protein
Formulation:	pH7.4 PBS, 0.05% NaN <sub>3</sub> , 40% Glycerol
Concentration:	lot specific
Purification:	Antigen affinity purification
Conjugation:	Unconjugated
Storage:	Store at -20°C.
Stability:	1 year
Predicted Protein Size:	26 kDa
Gene Name:	phosphoribosyl transferase domain containing 1
Database Link:	<a href="#">Entrez Gene 56952 Human Q9NRG1</a>
Background:	PRTFDC1 (phosphoribosyltransferase domain-containing protein 1), also known as HHGP, is a 225 amino acid protein that belongs to the purine/pyrimidine phosphoribosyltransferase family. The functions of PRTFDC1 are not well understood; however it has been suggested that it is frequently silenced in oral squamous-cell carcinomas by aberrant promoter hypermethylation. Conserved in vertebrates, PRTFDC1 is suggested to be a possible tumor-suppressor. PRTFDC1 is encoded by a gene which maps to chromosome 10.
Synonyms:	FLJ11888; HHGP



[View online »](#)

## Product images:



Gel: 12%SDS-PAGE  
Lysate: 40  $\mu$ g  
Lane 1-3: Human fetal brain tissue  
Human cerebrum tissue  
Human testis tissue  
Primary antibody: TA365334 (PRTFDC1 Antibody)  
at dilution 1/400  
Secondary antibody: Goat anti rabbit IgG at  
1/8000 dilution  
Exposure time: 1 minute