

Product datasheet for **TA365333S**

PREI3 (MOB4) Rabbit Polyclonal Antibody

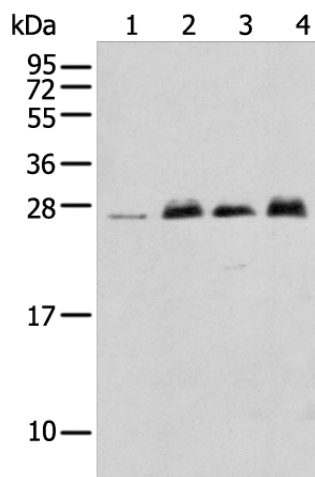
Product data:

Product Type:	Primary Antibodies
Applications:	IHC, WB
Recommended Dilution:	WB: 500-2000 WB positive control: K-562 cell □ Mouse brain tissue □ Rat brain tissue □ Human fetal brain tissue IHC: 25-100 Positive control: Human lung cancer Predicted cell location: Cytoplasm or Nucleus
Reactivity:	Human, Mouse, Rat
Host:	Rabbit
Isotype:	IgG
Clonality:	Polyclonal
Immunogen:	Full length fusion protein
Formulation:	pH7.4 PBS, 0.05% NaN ₃ , 40% Glycerol
Purification:	Antigen affinity purification
Conjugation:	Unconjugated
Storage:	Store at -20°C.
Stability:	1 year
Predicted Protein Size:	26 kDa
Gene Name:	MOB family member 4, phocein
Database Link:	Entrez Gene 25843 Human Q9Y3A3
Background:	This gene was identified based on its similarity with the mouse counterpart. Studies of the mouse counterpart suggest that the expression of this gene may be regulated during oocyte maturation and preimplantation following zygotic gene activation. Alternatively spliced transcript variants encoding distinct isoforms have been observed. Naturally occurring read-through transcription occurs between this locus and the neighboring locus HSPE1.
Synonyms:	2610109B12Rik; Mobkl1; Mobkl3; phocein; Phocn; Prei3

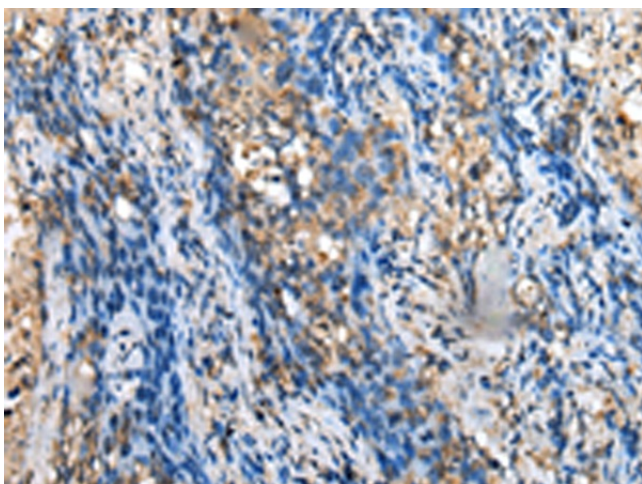


[View online »](#)

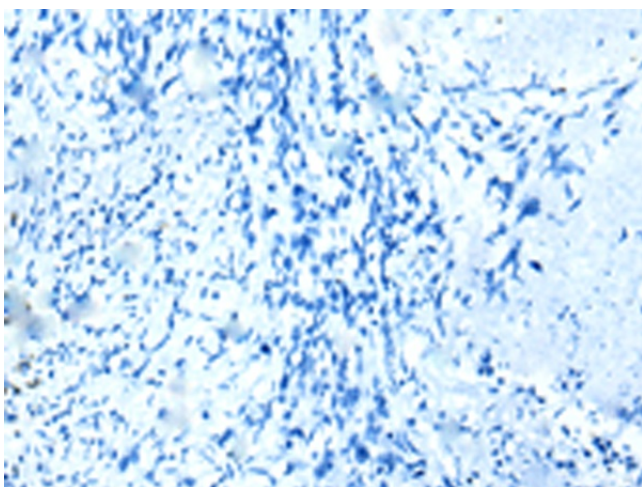
Product images:



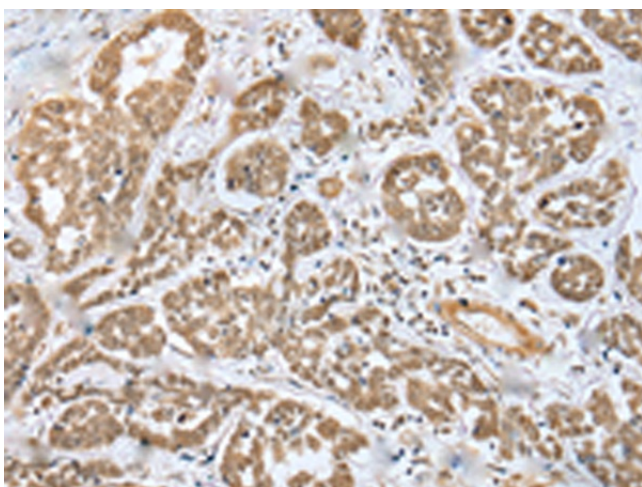
Gel: 12%SDS-PAGE
Lysate: 40 μ g
Lane 1-4: K-562 cell
Mouse brain tissue
Rat brain tissue
Human fetal brain tissue
Primary antibody: [TA365333] (MOB4 Antibody)
at dilution 1/400
Secondary antibody: Goat anti rabbit IgG at
1/8000 dilution
Exposure time: 1 minute



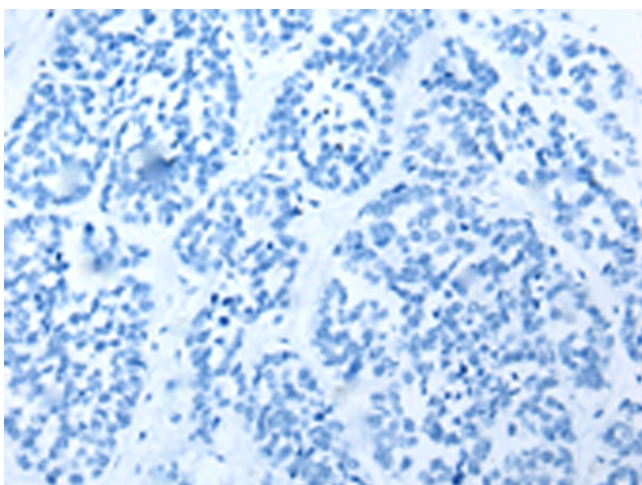
Immunohistochemistry of paraffin-embedded
Human lung cancer tissue using [TA365333]
(MOB4 Antibody) at dilution 1/35 (Original
magnification: $\times 200$)



Immunohistochemistry of paraffin-embedded Human lung cancer tissue using [TA365333] (MOB4 Antibody) at dilution 1/35, treated with fusion protein. (Original magnification: $\times 200$)



Immunohistochemistry of paraffin-embedded Human esophagus cancer tissue using [TA365333] (MOB4 Antibody) at dilution 1/35 (Original magnification: $\times 200$)



Immunohistochemistry of paraffin-embedded Human esophagus cancer tissue using [TA365333] (MOB4 Antibody) at dilution 1/35, treated with fusion protein. (Original magnification: $\times 200$)